

Unverferth[®]
Manufacturing Company, Inc.

ISOBUS GRAIN CART SCALE AND
DATA MANAGEMENT SYSTEM

U HARVEST[®] **PRO**



HARVEST DATA MADE EASY
FULL ISOBUS FUNCTIONALITY FOR RELIABLE OPERATION

Powered by **RAVEN**

Unverferth[®]
Manufacturing Company, Inc.

ISOBUS GRAIN CART SCALE AND
DATA MANAGEMENT SYSTEM

U HARVEST[®] **PRO**



HARVEST DATA MADE EASY
FULL ISOBUS FUNCTIONALITY FOR RELIABLE OPERATION

Powered by

RAVEN

UHarvest **PRO**

Your Complete ISOBUS Scale and Harvest Data Solution

FEATURES OVERVIEW

By using ISOBUS technology, the user can operate the UHarvest® Pro system on their virtual terminal display in the tractor, eliminating the need for batteries and extra monitors in the cab. Simply plug into the ISOBUS plug, and you're ready to go! With a free subscription to Slingshot® reporting, you have a complete data management solution that seamlessly integrates with most crop insurance requirements. Need to send your data to the cloud? Simply connect your mobile device with cellular data to the Bluetooth signal and open the free app to make it happen!

UHARVEST PRO SYSTEM BASE FEATURES

- **Complete Touch-Screen Operation**
Enjoy easy-to-use operation from your tractor's ISOBUS virtual terminal screen.
- **Harvest Data Structure**
Log your harvest by grower, farm and field for detailed reporting.
- **Accu-Save Data Recording**
System automatically records data for up to 10,000 loads with PTO sensor.
- **Truck, Destination and Variety Identification**
Easily log bushels by truck, destination and crop variety, including the ability to add custom varieties.
- **Hitch-Weight Management**
Monitor load distribution while the combine loads the grain cart for greater control.
- **Combine Yield Monitor Verification**
Easily use the grain cart to assist in calibrating the combine yield monitor with one touch and save a record of combine calibrations.
- **UHarvest Pro Cloud Solution Powered by Slingshot**
Slingshot is a secure, web-based data management system that enables you to log in, save and share your harvest data from anywhere.
- **Data Transfer**
Easily transfer harvest data to Slingshot using the free UHarvest Pro app for both Android and iOS through the supplied Bluetooth connection from the grain cart module.

UHARVEST PRO SYSTEM OPTIONAL FEATURES

- **Accu-Load Technology**
UHarvest Pro enables automatic grain cart unloading and shut-off at desired off-load weight.
- **Moisture Sense Technology**
The system records and converts grain weight to dry bushels for precise harvest recordkeeping.

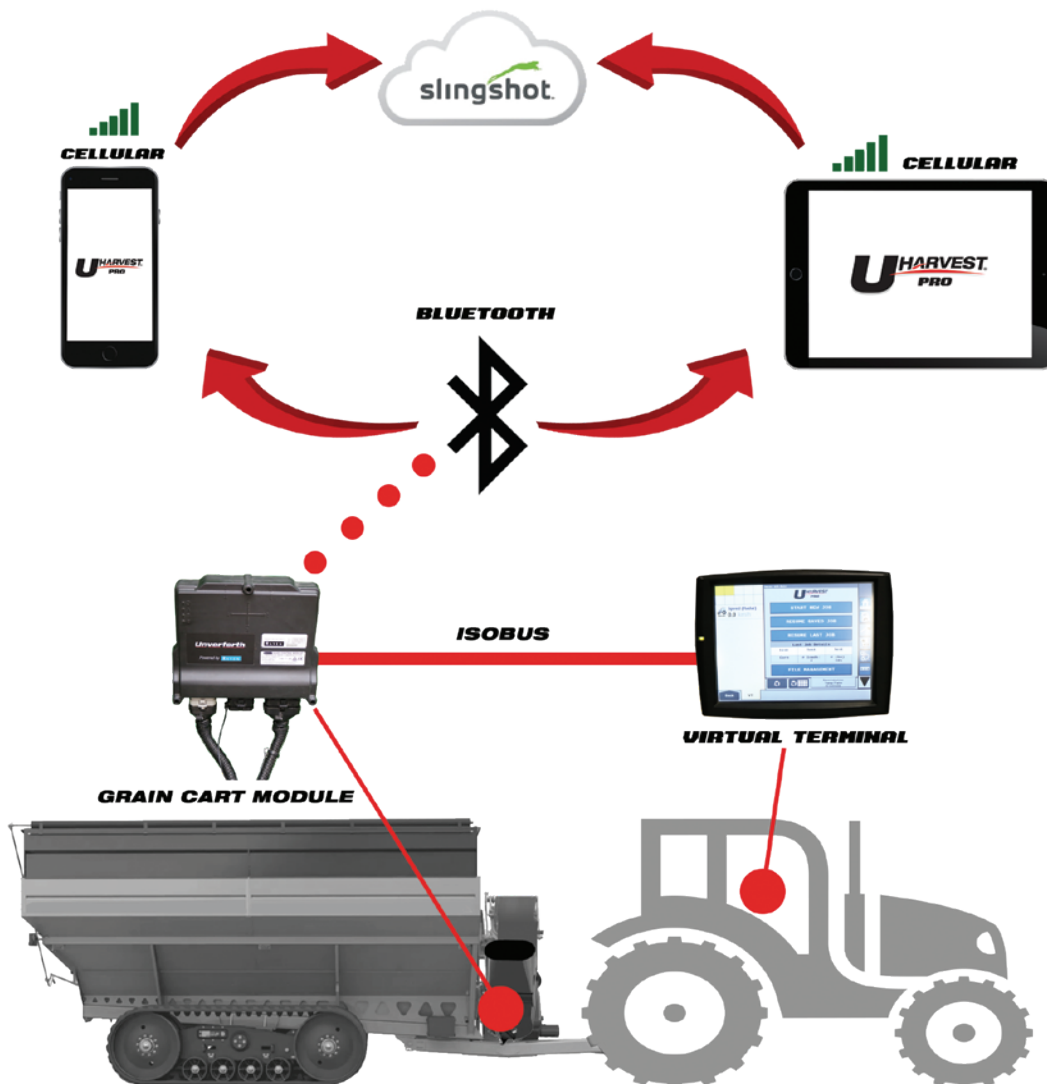
UHarvest PRO

Your Complete ISOBUS Scale and Harvest Data Solution

HOW IT WORKS

The UHarvest Pro system conveniently connects the grain cart scale load cells into your tractor's ISOBUS plug using a reliable ISOBUS cable. Enter your data on your virtual terminal display or upload from a mobile device for the crop and field you want to collect, and you're ready to harvest.

The UHarvest Pro system automatically records each load with user-specified information such as grower, farm, field, crop, truck, destination and variety so you can focus on unloading. The harvest data can then be quickly uploaded to a Raven Slingshot account for analysis or sharing with your crop adviser or insurance adjuster using the free mobile app.



CONNECTIONS

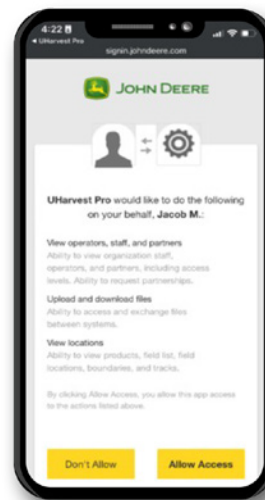
The UHarvest Pro “Connections” feature enables seamless integration of grower, farm and field data with third-party platforms such as John Deere Operations Center, allowing users to easily sync databases across systems. This connectivity eliminates the need for duplicate data entry, ensures accuracy through manual syncing of updates and enables quick distribution of changes to all UHarvest Pro-equipped grain carts via the mobile app, saving time and improving operational consistency. Setup is simple through the UHarvest Pro app, where users can connect to external accounts, log in and instantly synchronize their data across the entire operation.



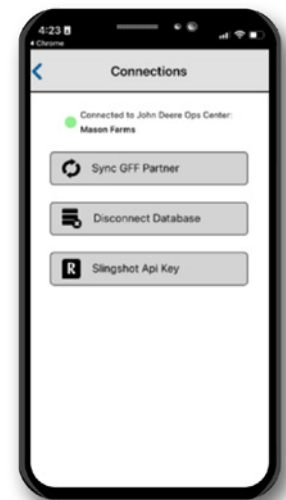
UHARVEST PRO APP



STEP 1



STEP 2



STEP 3



GRAIN CART MODULE



ISOBUS CABLING

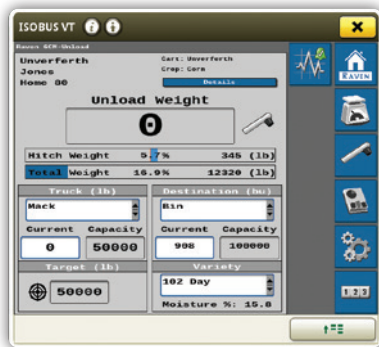


VIRTUAL TERMINAL

You've put in countless hours of hard work throughout the year to produce the best crop possible. Don't settle for a grain cart scale system that leaves you wanting more when it comes to operation and reporting. Look to the UHarvest Pro data reporting system to streamline your operation and get the harvest data reporting your hard work deserves!

UHarvest PRO

Data Management Features



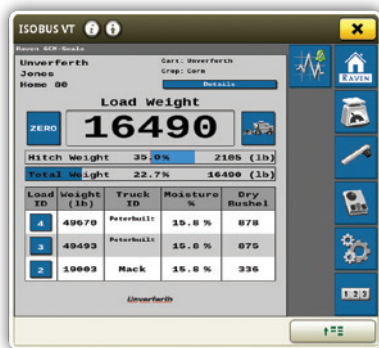
HARVEST DATA STRUCTURE

Track each load using the grower, farm and field structure as well as truck, destination and crop variety for complete harvest data reporting.



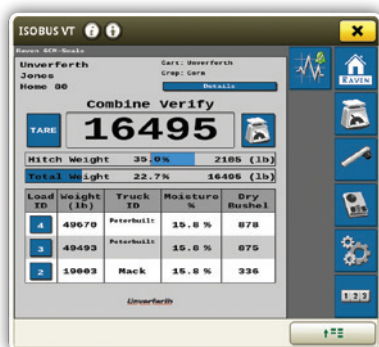
ACCU-SAVE DATA RECORDING

Automatically record loads using the proximity sensor mounted on the PTO driveshaft of the grain cart for the most accurate and complete harvest recordkeeping possible.



HITCH-WEIGHT MANAGEMENT

Maintain optimum tractor and cart control by keeping the grain load evenly distributed. This feature not only monitors grain and total cart weight, but it also shows real-time hitch weight and a color gauge to avoid overloading the hitch.



COMBINE YIELD MONITOR VERIFICATION

Use the scale report screen to easily calibrate the combine yield monitor with one touch. This calibration event is saved in the UHarvest Pro system once the verification process is completed.



ACCU-LOAD TECHNOLOGY

The optional Accu-Load technology provides quick and easy loading of trucks by closing the grain cart's flow gate when the desired weight is unloaded. After you've installed the hydraulic control valve on the cart, you need only push the "Auto" button for precise weight unloading. Each truck weight is matched to the truck name for easier operation. The operator can then focus on topping off each truck and proper grain placement.



MOISTURE SENSE TECHNOLOGY

Want to easily send a report to your crop insurance agent that includes the actual dry bushel count? Consider it done with the optional Moisture Sense system. It measures grain moisture as it leaves the cart and averages the content of each load, then converts all grain unloaded to standard dry bushels for the ultimate in harvest recordkeeping.



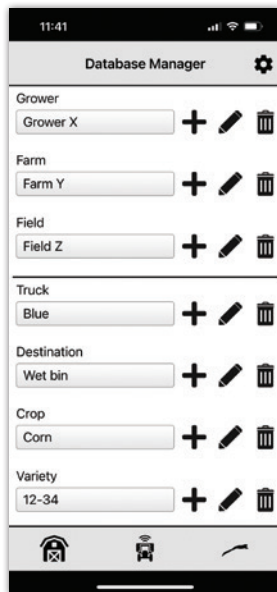
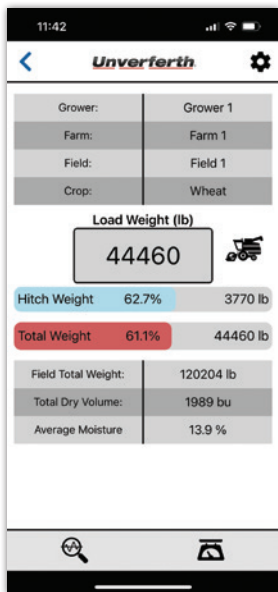
UHarvest PRO

Your Complete Harvest Data Reporting Solution

MOBILE DEVICE APP FEATURES

It's all about the data — data you can take to the bank after harvest! The good news is the Unverferth UHarvest Pro system can be paired with your mobile device using an app that allows you to view scale information on the go; create, edit and upload field information to the GCM and send your harvest information to the Raven Slingshot data manager.

View real-time grain cart information on a mobile device.



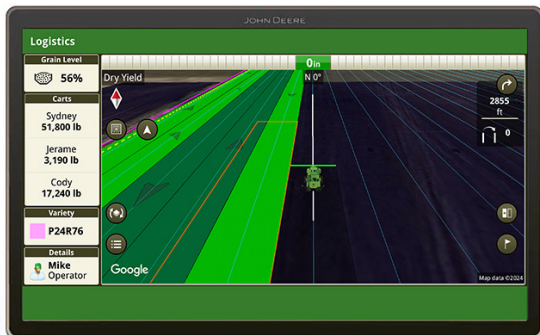
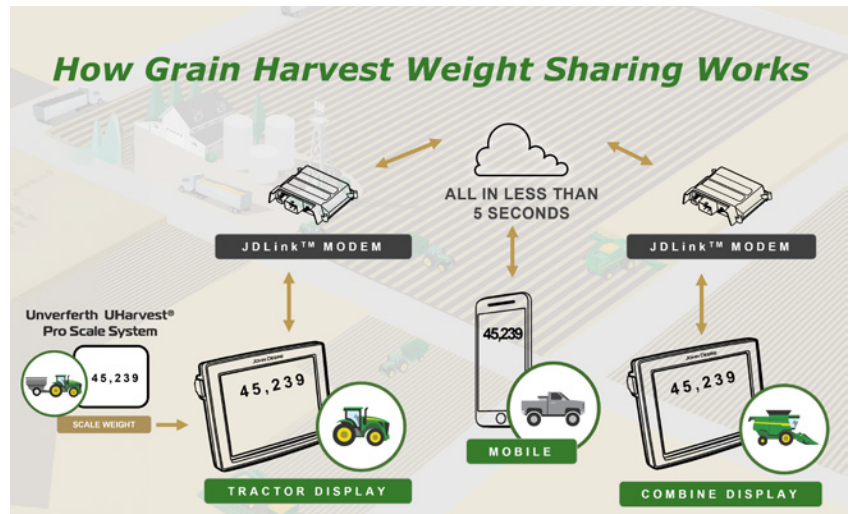
Harvest is over, and you have loads of valuable data that you've collected. Now what? With the UHarvest Pro system, you can quickly and easily send your data to the secure Slingshot data management cloud system, which allows you to easily create reports for crop insurance providers. Send your data to the cloud daily, or bring it all at one time when harvest is over. It's easy to do and completely up to you!



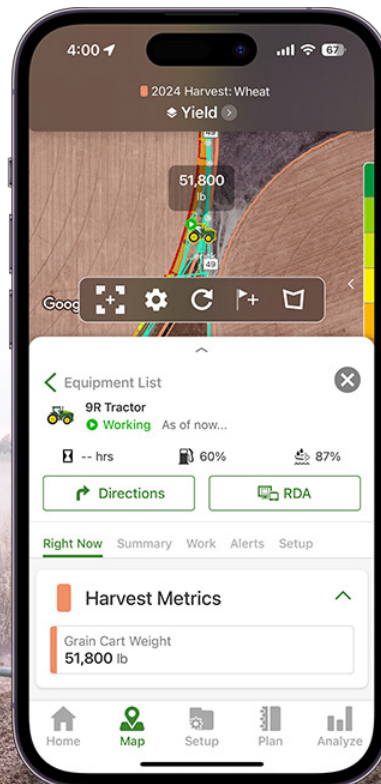
- Download the free UHarvest Pro app available on Android and iOS mobile devices with a cellular data plan
- Connect your mobile device to the Bluetooth signal provided by the GCM mounted on the grain cart
- Connect to your account on the mobile app using your Slingshot access key
- Once connected, select the files you would like to upload and send

JOHN DEERE **GRAIN HARVEST WEIGHT SHARING**

John Deere's Grain Harvest Weight Sharing enhances harvest efficiency by using In-Field Data Sharing to provide real-time visibility of grain cart weights across all machines in a work group, improving communication, reducing idle time, and enabling better logistical decisions for operators and managers both in the field and remotely. When paired with the UHarvest Pro grain cart scale system, the solution requires no additional hardware and runs seamlessly through John Deere Gen 4 or G5 displays, allowing grain cart weights to be displayed in-cab, shared with other connected machines and uploaded to Operations Center Mobile through the cloud, creating a fully integrated and streamlined harvest management system. This visibility improves communication between cabs and reduces idle time during harvest, helping farm managers optimize field operations and manage transport vehicles effectively.



Grain Weights on Combine Display



Grain Weights on Operations Center Mobile



UHarvest **PRO**

Your Complete Harvest Data Reporting Solution

SLINGSHOT CLOUD REPORTING

Slingshot is a secure, first-of-its-kind, web-based system that lets you send, store and share your harvest data. Using the free UHarvest Pro app, you can easily send files from the field on a mobile device with cellular connection to your Slingshot account.

- Log in securely and enjoy complete control of your harvest data
- View and manage account from any computer with an internet connection
- Create harvest reports in a few clicks, including merged reports from multiple fields for enhanced reporting to landlords, crop insurance adjusters and other business partners
- Included with preloaded crop types and the ability to add up to five custom crops
- Optional moisture sensor gives you an adjusted dry bushel count for greater accuracy of grain inventory once crop is dried
- Easily send an Acrobat report file to your crop insurance agent or any trusted business partner
- Easily export to Excel for additional reporting options



VISIT PORTAL.RAVENSLINGSHOT.COM TO GET YOUR FREE ACCOUNT.



slingshot **UHARVEST**

Grain Cart

File Details

GROWER	Unverferth	CROP	Corn
FARM	Venedicta	YEAR	2019
FIELD	Jones Road	Date Created:	2019-07-29 10:32:08 AM
Available Files:	Download original	Date Last Modified:	2019-07-29 10:39:27 AM
	Download PDF		

[File Editor](#) [Create Merged Report](#)

Job Report Summary

Total Wet Weight	Total Wet Yield	Total Dry Yield	Average Moisture
514,330.37 lbs	9,184.47 bu	7,935.81 bu	25.07%

Truck

Variety

Destination

Details

Load	Weight	Truck	Destination	Moisture	Test Weight	Wet	Dry	Variety	Date	Load Cell
1	25,872.37 lbs	Black Peterbuilt	Home	0%	55.00 lbs/bu	452.0 bu	462.0 bu	Pioneer	2019-07-29 10:34:12	40000
2	25,105.43 lbs	Black Peterbuilt	Home	0%	55.00 lbs/bu	448.3 bu	449.3 bu	Pioneer	2019-07-29 10:34:24	40000
3	53,811.22 lbs	Black Peterbuilt	Home	26.7%	55.00 lbs/bu	950.9 bu	828.8 bu	Pioneer	2019-07-29 10:38:01	40000
4	29,805.82 lbs	Mac	ADM	29%	55.00 lbs/bu	532.3 bu	444.6 bu	Dekalb	2019-07-29 10:38:29	40000
5	25,969.82 lbs	Mac	ADM	29.1%	55.00 lbs/bu	491.8 bu	401.7 bu	Stewarts	2019-07-29 10:39:47	40000
6	25,535.19 lbs	Black Peterbuilt	ADM	28.9%	55.00 lbs/bu	473.8 bu	398.0 bu	Pioneer	2019-07-29 10:37:11	40000
7	53,556.59 lbs	Mac	Home	27.9%	55.00 lbs/bu	958.4 bu	812.4 bu	Dekalb	2019-07-29 10:37:32	40000
8	32,507.95 lbs	Mac	Cargill	28.4%	55.00 lbs/bu	580.5 bu	489.0 bu	Stewarts	2019-07-29 10:37:47	40000



SYSTEM SPECIFICS

UHarvest Pro is available for any scale-equipped grain cart.

The UHarvest Pro system features a plug-and-play industrial-grade GCM with built-in Bluetooth signal. The GCM conveniently mounts to the grain cart and easily connects to the scale cables and the tractor's ISO-BUS system.

UHarvest Pro operates on ISOBUS tractor terminals produced in the last decade.

See your local tractor OEM dealer for questions on ISOBUS virtual terminal functionality with UHarvest Pro software.

- **Tractor ISOBUS connection**

The UHarvest Pro system connects directly to the tractor's ISOBUS system for a fast, reliable connection. Easily set up the grain cart configuration by following a step-by-step setup wizard that prompts the user to enter information about the grain cart. Then enter or upload your grower, farm and fields and the UHarvest Pro system is ready to go to work.

**SEE YOUR NEAREST UHARVEST PRO SYSTEM DEALER TODAY
FOR COMPLETE DETAILS OR VISIT UHARVEST.NET.**



UHARVEST[®]
PRO

Powered by

RAVEN

Due to continuing improvements in the design and manufacture of Unverferth products, all specifications contained herein are subject to change without notice. For relevant patent marking, please visit Unverferth.com/patents.

Unverferth[®]
Manufacturing Company, Inc.

P.O. Box 357 • Kalida, OH 45853

Unverferth.com

419.532.3121

© 2026 Unverferth Manufacturing Co., Inc. Printed in U.S.A. Additional facilities in California, Georgia, Iowa, Nebraska, North Dakota, Washington, Texas and Canada. Unverferth and UHarvest are trademarks, registered or applied for of Unverferth Mfg. Co., Inc. Raven and Slingshot are registered trademarks of Raven Industries. Other trademarks are by their respective owners.

UHARVE2603001