



Stalk PULLr

Model 600



***Root Out Residue for
an Ideal Seedbed***

A TOUGH ACT TO FOLLOW

RESIDUE MANAGEMENT

Stalk PULLr

TILLAGE TOOLS

PULL STALKS AND ROOT BALLS OUT OF THE ROW WITH PINPOINT PRECISION FOR FASTER DECOMPOSITION WHILE ONLY DISTURBING A FEW INCHES OF SOIL FOR TRUE NO-TILL PERFORMANCE.

When it comes to residue management in your fields, look to the Orthman lineup of tillage tools and the model 600 Stalk PULLr. With horsepower requirements of just 5–10 hp per row and operating speeds of 10 mph or more, you can cover more acres in a day with less fuel than other methods to keep more of the soil-building residue in your field.



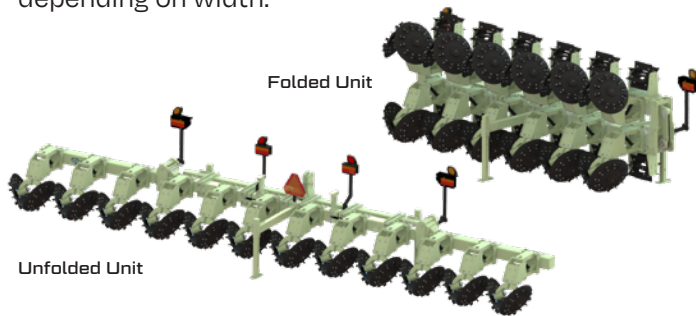
The Orthman Stalk PULLr's unique design provides dual overlapping 24" discs with drive lugs to help propel them through the field. The angle and depth adjustability allows you to determine the amount of tillage that occurs in the row.



Stalk PULLr

TILLAGE TOOLS

Sizes are available to suit any size operation from four to 18 rows with multiple row spacings from 30" to 40" depending on width.



Rigid sizes feature durable 7" x 7" frame construction, and folding models feature the innovative Orthman toolbar frame with internal hydraulic fold cylinders and in-line boring of the wing hinges for long-term, trouble-free operation.



The Orthman time-tested row units feature parallel linkage for independently following the ground contour and are constructed with self-lubricating, greaseless composite bushings to eliminate daily maintenance for covering more acres per day. Downpressure is easily adjusted to match soil type and desired field finish.

The heavy-duty boxed frame design of the row units provides added rigidity to the components for longer life and greater tillage accuracy.

Large 24"-diameter discs handle crop residue, such as corn, milo and sunflowers, or cotton, with ease. Blades can be swapped side to side for greater life.

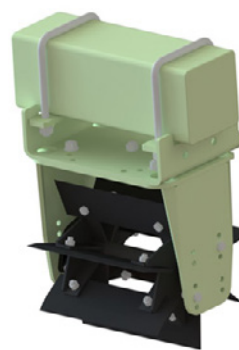


Discs feature replaceable cleats to propel them through the field at higher speeds for plug-free operation.

With four different disc cutting angles, fine-tuning the aggressiveness of tillage from just cutting and pulling out the root crown to pulling out the entire plant with the root ball is easily accomplished.

Optional front-mounted 12"-diameter seven-blade choppers provide added residue sizing action in any situation. High-carbon steel blades maintain their

cutting edge for years of dependable service. They are angle and depth adjustable for unmatched chopping action in any situation.



Optional height-adjustable gauge wheels provide added depth control.

▶ Visit OrthmanEquip.com to find your nearest Stalk PULLr dealer today.



Stalk PULLr

SPECIFICATIONS

Model 600 Stalk PULLr														
Size	4-Row	6-Row	6-Row	8-Row	8-Row	8-Row	8-Row	8-Row	12-Row	12-Row	12-Row	16-Row	16-Row	18-Row
Row Spacing	36"-40"	30"	38"	30"	36"-38"	38"-40"	36"-38"	38"-40"	30"	36"-38"	38"-40"	30"	38"-40"	36"
Rigid/Folding	Rigid	Rigid	Rigid	Rigid	Rigid	Rigid	Folding	Folding	Folding	Folding	Folding	Folding	Folding	Folding
Fold Style	—	—	—	—	—	—	180°	180°	180°	171°	171°	173°	TOP TRUSS	TOP TRUSS
Toolbar	Single 7x7	Single 7x7	Single 7x7	Single 7x7	Single 7x7	Single 7x7	Single 7x7	Single 7x7	Single 7x7	Single 7x7	Single 7x7	Single 7x7	Double 7x7	Double 7x7
Hitch	CAT 3/3N	CAT 3/3N	CAT 3/3N	CAT 3/3N	CAT 3/3N	CAT 3/3N	CAT 3/3N	CAT 3/3N	CAT 3/3N	CAT 3/3N	CAT 3/3N	CAT 3/3N	CAT 4/4N	CAT 4/4N
Transport Width	13'4"	15'0"	18'0"	20'0"	24'0"	25'0"	13'5"	14'3"	15'11"	19'7"	21'0"	22'8"	28'2"	31'8"
Approx. Weight (lbs.)	2,205	2,970	3,110	3,750	3,925	3,955	4,780	4,850	6,340	6,920	7,055	9,430	11,690	12,590

Horsepower requirements of 5-10 per row. Standard parking stands, transport lighting and dual 24" concave blades are included.

Due to continuing improvements in the design and manufacture of Unverferth products, all specifications contained herein are subject to change without notice.



▶ STOP BY YOUR ORTHMAN STALK PULLr DEALER TODAY OR VISIT ORTHMANEQUIP.COM TO LEARN HOW YOU CAN ACHIEVE UNMATCHED SEEDBEDS IN TIME FOR THE NEXT PLANTING SEASON.

Unverferth
Manufacturing Company, Inc.

®™ Trademarks, registered or applied for, of Unverferth Manufacturing Co., Inc., Kalida, OH
Additional facilities in California, Georgia, Iowa, Nebraska, North Dakota, Texas, Washington,
Ontario and Saskatchewan, Canada

P.O. Box 357 | Kalida, OH 45853 | 419-532-3121
Unverferth.com

© 2024 Unverferth Manufacturing Co., Inc. Printed in USA
SP60042515005M1