




**60' ATV MANUAL-FOLD BOOM**

Serial Number D62950100 & Higher

Part No. 41492

### Foreword

 This symbol identifies important safety messages. When you see it, read the message that follows and be alert to the possibility of personal injury.

Remember, safety instructions stated in this manual are for your protection. Read them carefully and follow them closely when working around or using this machine.

Read and study this manual completely before attempting to operate this implement. Take this manual to the field for handy reference when operating, adjusting, or servicing your machine.

When referenced, “Right-Hand” (RH) and “Left-Hand” (LH) side of the machine are determined by standing behind the machine and facing in the direction of travel.

### Product Information

When ordering parts or when requesting further information or assistance, always give the following information:

- Machine name
- Model number
- Serial number

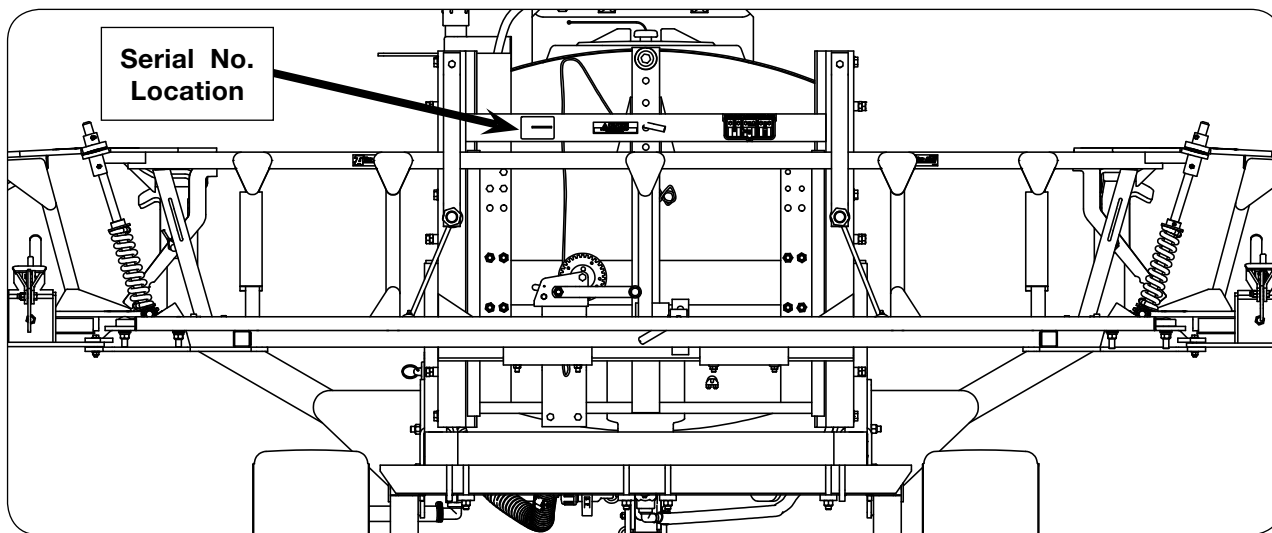
All products manufactured by Unverferth Mfg. Co., Inc. are warranted to be free from material and workmanship defects for one full year from time of consumer delivery. Your local dealer will gladly assist you with any warranty questions.

Please fill out and retain this portion for your records. The serial number plate is located on the frame as shown below.

Purchase Date \_\_\_\_\_ Model \_\_\_\_\_ Serial No. \_\_\_\_\_

Dealer \_\_\_\_\_ City \_\_\_\_\_

Dealer Contact \_\_\_\_\_ Phone \_\_\_\_\_



### IMPORTANT

*The information, specifications, and illustrations in the manual are on the basis of information available at the time it was written. Due to continuing improvements in the design and manufacture of Unverferth products, all specifications and information contained herein are subject to change without notice.*

**Table of Contents**

Foreword .....2  
Product Information.....3

**SECTION I**  
**Safety**

General Hazard Information ..... 1-2  
Safety Decals ..... 1-3  
Following Safety Instructions ..... 1-4  
Before Operating or Servicing ..... 1-4  
During Operation ..... 1-5  
Before Transporting ..... 1-5  
During Transport..... 1-5  
Chemical Hazards ..... 1-6  
Preparing for Emergencies..... 1-7  
Wearing Protective Equipment..... 1-7

**SECTION II**  
**Set Up & Maintenance**

Set Up Instructions ..... 2-2  
Changing Breakaway Wheels or Breakaway Wheel Bolts..... 2-4

FOR ATV SPRAYER INFORMATION, PLEASE REFER TO YOUR ATV SPRAYER MANUAL.

**SECTION III**  
**Parts**

Manual Lift Assist Components ..... 3-2  
Self-Leveling Center Section Components..... 3-4  
Center Section Components..... 3-6  
Breakaway Assembly Components..... 3-8  
Main Wing Components..... 3-10  
Mid Wing Components..... 3-12  
End Wing Components..... 3-14  
Boom Support Components ..... 3-16  
60' Boom Line Plumbing - 3 Section 15" Spacing..... 3-18  
60' Boom Line Plumbing - 3 Section 20" Spacing..... 3-20  
60' Boom Line Plumbing - 6 Section 15" Spacing..... 3-22  
60' Boom Line Plumbing - 6 Section 20" Spacing..... 3-24  
Light Components ..... 3-26  
Boom Strainer Kit..... 3-28

# **SECTION I**

# **Safety**

General Hazard Information .....	1-2
Safety Decals .....	1-3
Following Safety Instructions .....	1-4
Before Operating or Servicing .....	1-4
During Operation .....	1-5
Before Transporting .....	1-5
During Transport.....	1-5
Chemical Hazards .....	1-6
Preparing for Emergencies.....	1-7
Wearing Protective Equipment.....	1-7

## General Hazard Information

No accident-prevention program can be successful without the wholehearted cooperation of the person who is directly responsible for the operation of the equipment.

A large number of accidents can be prevented only by the operator anticipating the result before the accident is caused and doing something about it. No power-driven equipment, whether it be transportation or processing, whether it be on the highway, in the field, or in the industrial plant, can be safer than the person who is at the controls. If accidents are to be prevented--and they can be prevented--it will be done by the operators who accept the full measure of their responsibility.

It is true that the designer, the manufacturer, and the safety engineer can help; and they will help, but their combined efforts can be wiped out by a single careless act of the operator.

It is said that, "the best kind of a safety device is a careful operator." We, at Unverferth Mfg. Co., Inc. ask that you be that kind of operator.



**REMEMBER:**  
**THINK SAFETY**  
A CAREFUL OPERATOR IS THE  
BEST INSURANCE AGAINST AN  
ACCIDENT!

### SIGNAL WORDS



INDICATES AN EXTREMELY HAZARDOUS SITUATION OR ACTION THAT WILL RESULT IN SERIOUS INJURY OR DEATH.



INDICATES A HAZARDOUS SITUATION OR ACTION THAT COULD RESULT IN SERIOUS INJURY OR DEATH.



INDICATES AN UNSAFE SITUATION OR ACTION THAT MAY RESULT IN PERSONAL INJURY.

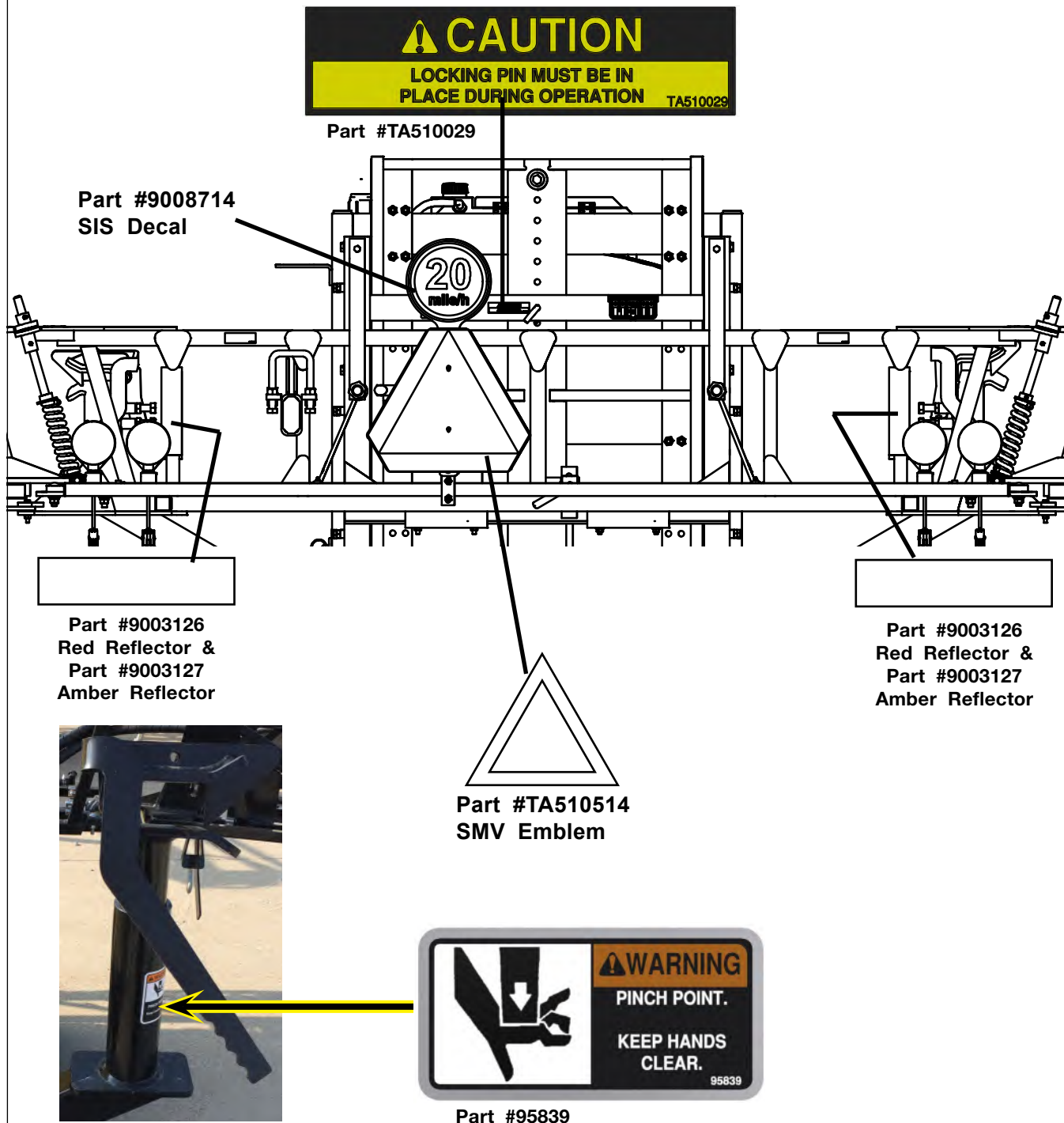


*Is used for instruction on operating, adjusting, or servicing a machine.*

Safety Decals

**⚠ WARNING**

- REPLACE LOST, DAMAGED, PAINTED, OR UNREADABLE DECALS IMMEDIATELY. IF PARTS THAT HAVE DECALS ARE REPLACED, ALSO MAKE SURE TO INSTALL NEW DECALS. THESE DECALS INFORM AND REMIND THE OPERATOR WITH OPERATIONAL INFORMATION AND SAFETY MESSAGES.



## Following Safety Instructions

- Read and understand this operator's manual before operating.



- All machinery should be operated only by trained and authorized personnel.

- To prevent machine damage, use only attachments and service parts approved by the manufacturer.

- Always shut power unit and towing vehicle engine off and remove keys before servicing the implement.



- Avoid personal attire such as loose fitting clothing, shoestrings, drawstrings, pants cuffs, long hair, etc., that may become entangled in moving parts.

- Do not allow anyone to ride on the implement. Make sure everyone is clear before operating machine or towing vehicle.



## Before Servicing

- Avoid working under an implement; however, if it becomes absolutely unavoidable, make sure the implement is safely blocked.



- Ensure that all applicable safety decals are installed and legible.

- Check all spray equipment for leaks. Repair any leaks before beginning or resuming operation.

- Residual pressure may exist in sprayer plumbing even when unit is not in use. Relieve pressure before servicing any plumbing.

## Before Operating

- Always make certain everyone and everything is clear of the machine before beginning operation.

- Ensure that all applicable safety decals are installed and legible.

- When operating sprayers on sidehill conditions, it is recommended that the wheel spacing be set as wide as possible for stability.

- Hitch sprayer to towing vehicle and clear all personnel from the surrounding area before folding and unfolding wings.

- Ensure tank access covers are fully closed before beginning or resuming operation.

- Residual pressure may exist in sprayer plumbing even when unit is not in use. Relieve pressure before servicing any plumbing.



### During Operation

- Regulate speed to field conditions. Maintain complete control at all times.
- Never service or lubricate equipment when in operation.
- Keep away from overhead power lines. Electrical shock can cause serious injury or death.
- Use extreme care when operating close to ditches, fences, power lines, or on hillsides.
- Do not leave equipment unattended with engine running.

### Before Transporting

- Check for proper function of all available transport lights. Make sure that all reflectors are clean and in place on machine. Make sure that the SMV emblem and SIS decal are visible to approaching traffic.

### During Transport

- Comply with all laws governing highway safety when moving machinery.
- Use transport lights as required by all laws to adequately warn operators of other vehicles.
- Use good judgment when transporting equipment on highways. Regulate speed to road conditions and maintain complete control.
- Maximum transport speed of this implement should never exceed 20 mph as indicated on the machine. Maximum transport speed of any combination of implements must not exceed the lowest specified speed of the implements in combination. Do not exceed 10 mph during off-highway travel.
- Slow down before making sharp turns to avoid tipping. Drive slowly over rough ground and side slopes.
- It is probable that this implement is taller, wider, and longer than the towing vehicle. Become aware of and avoid all obstacles and hazards in the travel path of the equipment, such as power lines, ditches, etc.

## **Chemical Hazards**

- Always wear personal protective equipment when working with or near chemicals. This equipment includes, but is not limited to: protective eye wear, gloves, shoes, socks, long-sleeved shirt, and long pants. Additional protection may be required for many types of chemicals.

---
- Spray tanks may contain residual toxic chemicals. **DO NOT ENTER SPRAY TANK FOR ANY REASON WITHOUT WEARING PROPER VENTILATION EQUIPMENT.** Failure to do so may result in asphyxiation and death.

---
- Seek and receive chemical product training prior to using agricultural chemicals.

---
- Read and understand the entire label of every chemical being applied with this sprayer.

---
- Avoid breathing spray mist or vapor.

---
- Wash hands and exposed skin immediately after contact with spray/fertilizer solution and application equipment.

---
- Remove clothing immediately if chemicals penetrate clothing and contact skin. Wash thoroughly and put on clean clothing.

---
- Dispose of unused chemical in accordance with chemical label directions and local/national regulations.

### Preparing for Emergencies

- Keep a first aid kit and properly rated fire extinguisher nearby.



- Keep emergency numbers for fire, rescue, and poison control personnel near the phone.



### Wearing Protective Equipment

- Wear clothing and personal protective equipment appropriate for the job.



- Wear steel-toed shoes when operating.



- Wear hearing protection when exposed to loud noises.



- Do not wear additional hearing impairing devices such as radio headphones, etc.



**Notes**

**SECTION II**

**Set Up & Maintenance**

Set Up Instructions ..... 2-2  
Changing Breakaway Wheels or Breakaway Wheel Bolts..... 2-4

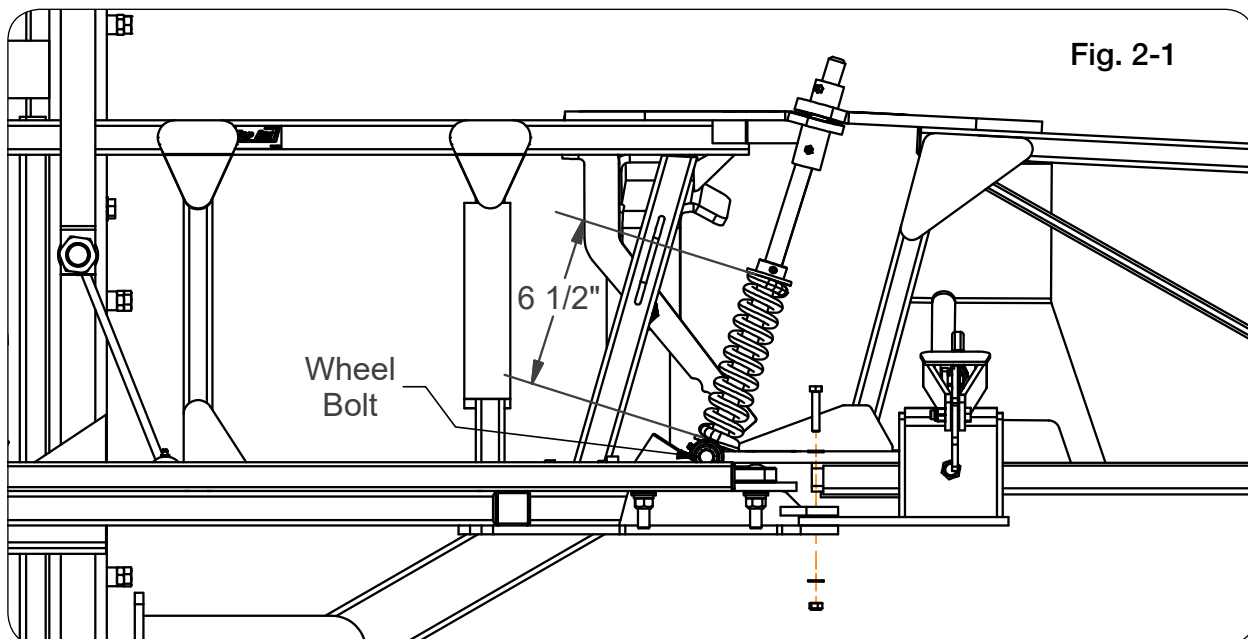
FOR ATV SPRAYER INFORMATION, PLEASE REFER TO YOUR ATV SPRAYER MANUAL.

## Set Up Instructions

### **WARNING**

- **READ AND UNDERSTAND SAFETY RULES BEFORE OPERATING OR SERVICING THIS MACHINE. REVIEW SAFETY SECTION IN THIS MANUAL IF NECESSARY.**
- **EYE PROTECTION AND OTHER APPROPRIATE PERSONAL PROTECTIVE EQUIPMENT MUST BE WORN WHILE SERVICING IMPLEMENT.**
- **KEEP HANDS CLEAR OF PINCH POINT AREAS.**

1. Using a safe lifting device rated for 200 lbs. bolt H-Frame to frame of sprayer by using 11 1/2" and 7 1/2" angles. Use 1/2" x 1 1/2" and 1/2" x 3 1/2" bolts, lock washers and nuts.
2. Bolt pivot plates on center section using 3/8"-16UNC x 2 1/2" bolts, lock washers, and nuts. **Hand tighten at this time.**
3. Assemble wing to center section with 3/4" x 21" threaded rod. Drop threaded rod with threads down through top wing pivot, then center section top pivot, then 3/4" flat washer, the spring, then bottom pivot of wing, then pivot plate sleeve. Put on 3/4" flat washer and start 3/4" nut. Drive 1/4" x 2" roll pin in 1/4" hole in threaded rod. Tighten 3/4" nut on 3/4" threaded rod and compression spring to 6 1/2". (Fig. 2-1)



4. To straighten wings, hold wing in desired operation position, front to back, up and down, and tighten all pivot plate bolts.
5. Grease all grease zerks daily.

## Set Up Instructions

6. Assemble nozzle clamps and hoses in desired position for application of sprayer.

**NOTE:** Over center latches on the Main Wing and Mid Wing should be adjusted so that when latched, the boom is rigid (Not loose/sloppy). Adjustment can be accomplished by the threaded portion of hook end. (Fig. 2-2 and 2-3)

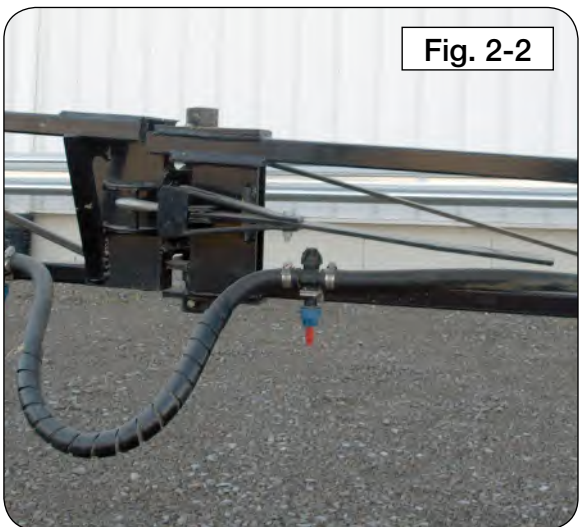


Fig. 2-2

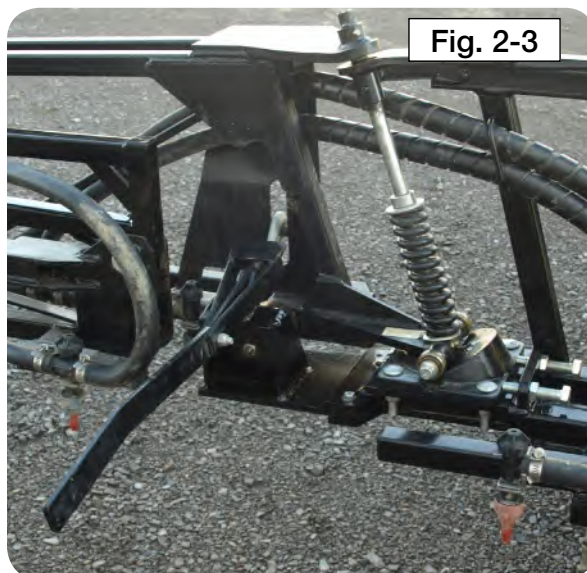


Fig. 2-3

## Boom Rest Bracket Adjustment

**NOTE:** Boom rest brackets should be adjusted dependent upon boom level ensuring that the boom easily goes into the latch mechanism when folded forward. This can be accomplished through a combination of two different ways.

1. Loosen the bolts on the upper portion of the rest bracket. This will allow the upper portion to telescope up/down to the proper height. Once at the correct height, retighten the bolts, locking the height adjustment.
2. Loosen the bolts on the upper portion of the rest bracket. This will allow the entire bracket assembly to telescope up/down to the proper height. Once at the correct height, retighten the bolts on the main frame, locking the height adjustment.

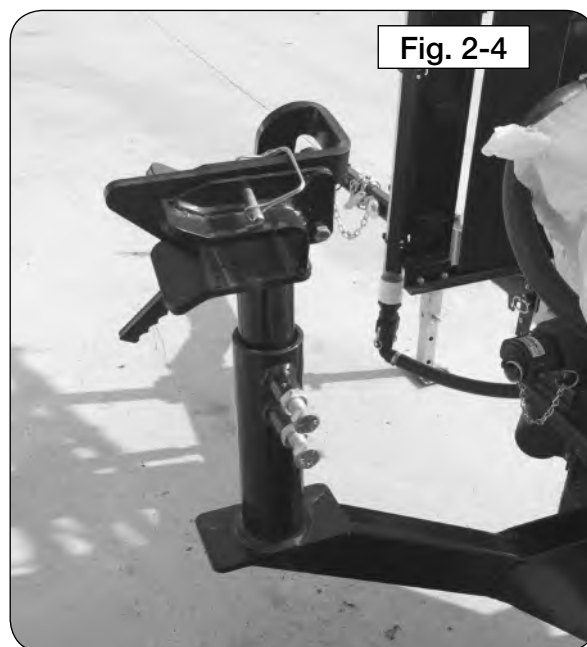
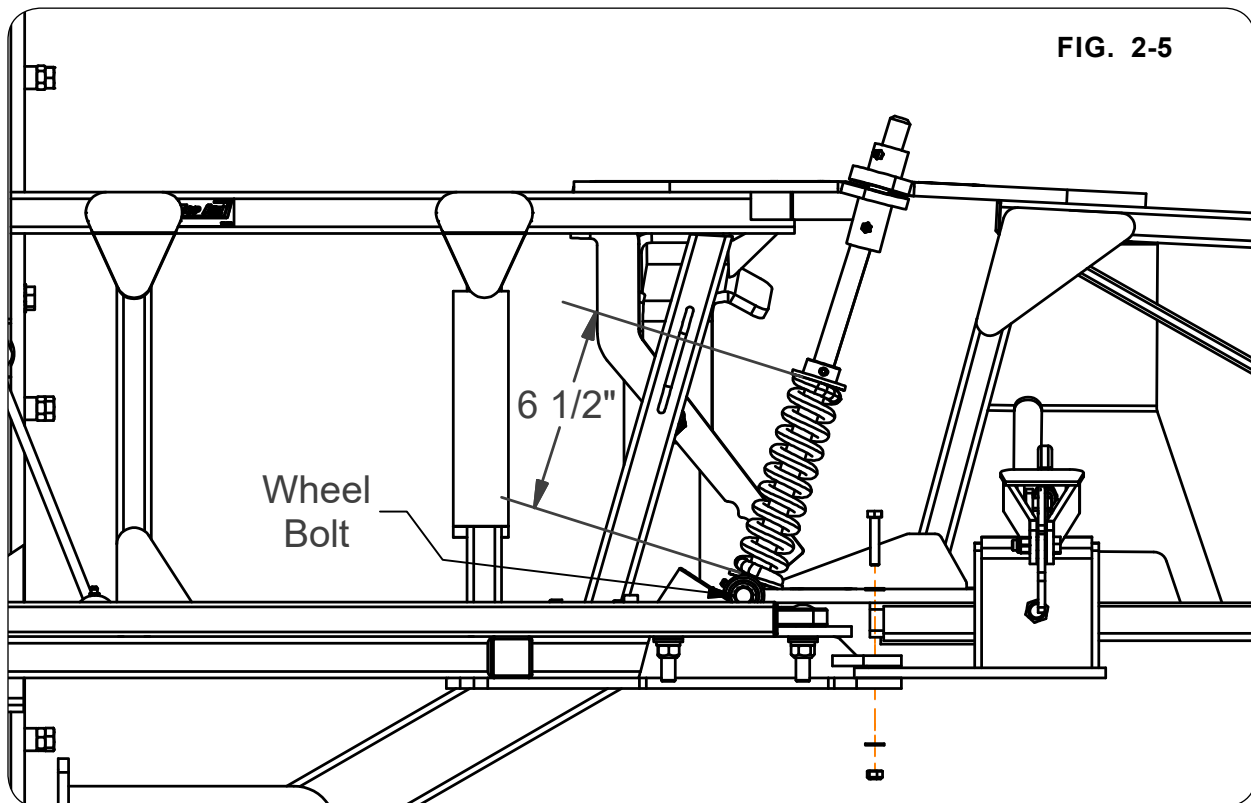


Fig. 2-4

### Changing Breakaway Wheels or Breakaway Wheel Bolts

1. Loosen the 3/4" jam nuts on the threaded rod which will relieve the tension on the spring.
2. Loosen the set screws that lock the wheel bolts in place and remove the wheel bolt. This will also allow the wheel to be removed.
3. Replace the wheel bolt, wheel, thrust bearing, and thrust washers as shown on the previous page.
4. Tighten wheel bolt so it turns tightly. Wheel should not spin freely.
5. Tighten set screws to lock wheel bolts in place.
6. Tighten 3/4" jam nuts on threaded rod and compress spring to 6 1/2". (Fig 2-5)



7. Grease all grease zerks daily.



# SECTION III

## Parts

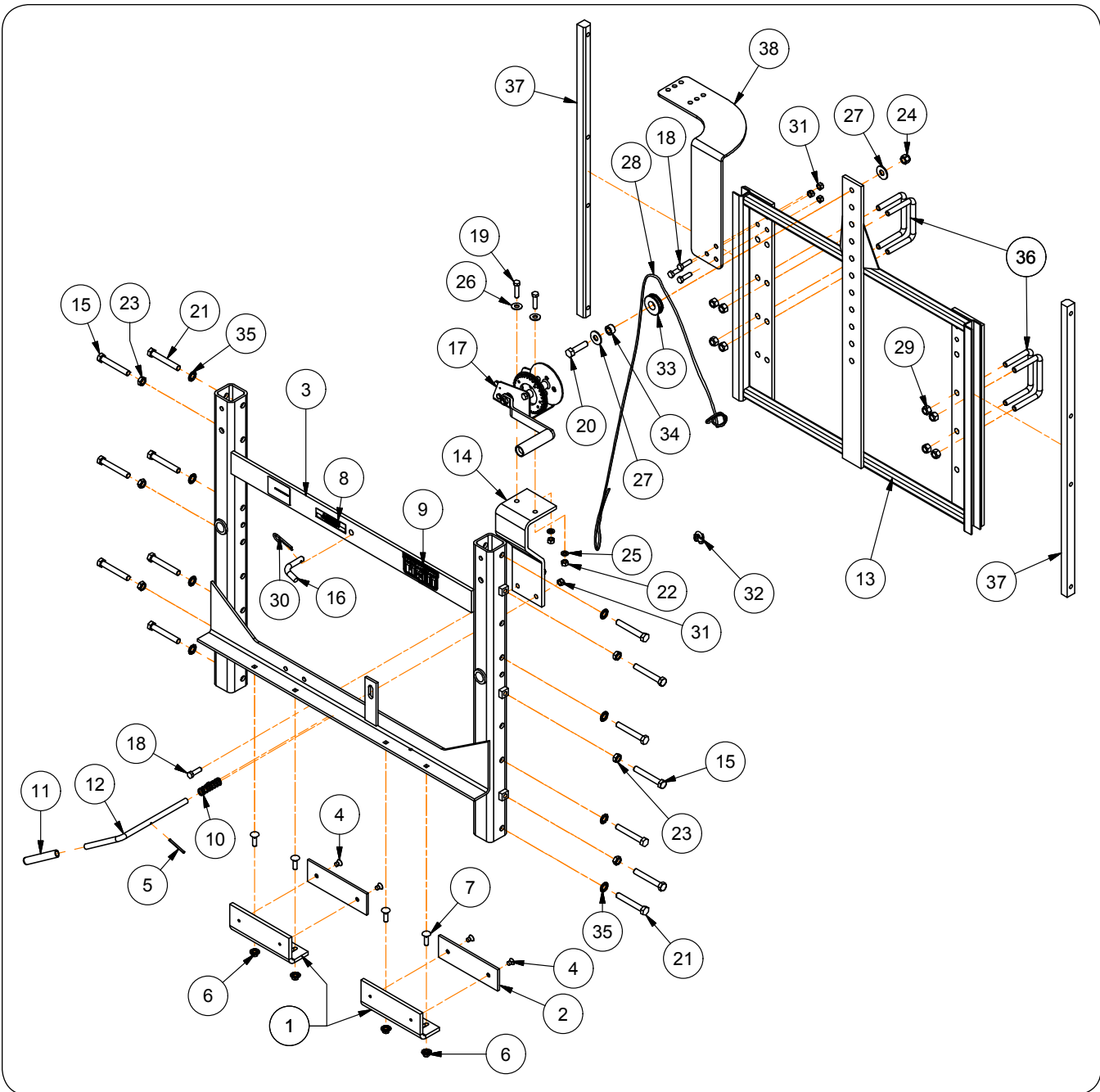
**Please visit [www.unverferth.com/parts/](http://www.unverferth.com/parts/) for the most current parts listing.**

Manual Lift Assist Components .....	3-2
Self-Leveling Center Section Components.....	3-4
Center Section Components.....	3-6
Breakaway Assembly Components.....	3-8
Main Wing Components.....	3-10
Mid Wing Components.....	3-12
End Wing Components.....	3-14
Boom Support Components .....	3-16
60' Boom Line Plumbing - 3 Section 15" Spacing.....	3-18
60' Boom Line Plumbing - 3 Section 20" Spacing.....	3-20
60' Boom Line Plumbing - 6 Section 15" Spacing.....	3-22
60' Boom Line Plumbing - 6 Section 20" Spacing.....	3-24
Light Components .....	3-26
Boom Strainer Kit.....	3-28

# 60' MANUAL-FOLD BOOM — Parts

## Manual Lift Assist Components

Please visit [www.unverferth.com/parts/](http://www.unverferth.com/parts/) for the most current parts listing.



## 60' MANUAL-FOLD BOOM — Parts

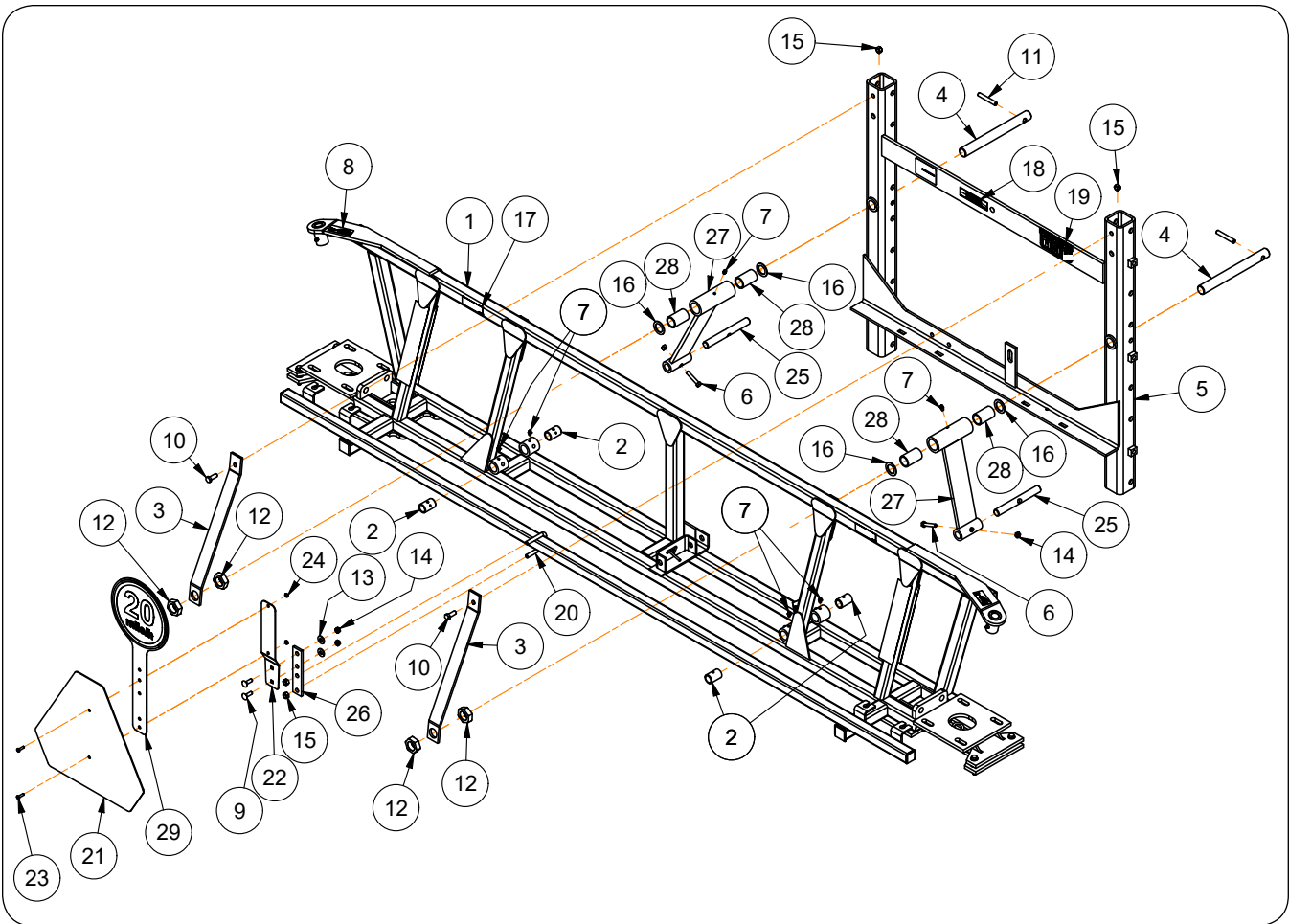
### Manual Lift Assist Components

Please visit [www.unverferth.com/parts/](http://www.unverferth.com/parts/) for the most current parts listing.

ITEM	PART NO.	QTY.	DESCRIPTION	NOTES
1	41082B	2	Bracket =Black=	
2	41083	2	Pad 1/4 x 2 1/2 x 8	
3	41267B	1	H-Frame Weldment =Black=	
4	9002024	4	Flat Head 5/16"-18UNC x 1/2" Socket Head Capscrew	
5	900909-105	1	Roll Pin 3/16" Dia. x 2" (Stainless Steel)	
6	91263	4	Nut/Large Flange 3/8"-16UNC	
7	9388-052	4	Carriage Bolt 3/8"-16UNC x 1 1/4" (Grade 5)	
8	TA510029	1	Decal, CAUTION "Locking Pin"	
9	TA510031	1	Decal, USA	
10	TA510035	1	Spring 23/32" Dia. x 2 1/2"	
11	TA510453	1	Handle Grip	
12	TA522140B	1	Lock Pin 1/2" Dia. x 12 7/8"	
13	41182B	1	Sliding Center Frame Weldment =Black=	
14	41310B	1	Winch Bracket =Black=	
15	9005422	6	Capscrew 1/2"-13UNC x 3 1/2" (Grade 8)	
16	902450	1	Bent Pin 1/2" Dia.	
17	9501907	1	Winch 900 Lbs.	
18	9390-056	5	Capscrew 3/8"-16UNC x 1 1/4" (Grade 5)	
19	9390-057	2	Capscrew 3/8"-16UNC x 1 1/2" (Grade 5)	
20	9390-103	1	Capscrew 1/2"-13UNC x 2" (Grade 5)	
21	9390-109	8	Capscrew 1/2"-13UNC x 3 1/2" (Grade 5)	
22	9394-006	2	Hex Nut 3/8"-16UNC	
23	9395-010	6	Hex Jam Nut 1/2"-13UNC	
24	9398-016	1	Elastic Stop Nut 1/2"-13UNC	
25	9404-021	2	Lock Washer 3/8"	
26	9405-076	2	Flat Washer 3/8" USS	
27	9405-088	2	Flat Washer 1/2" USS	
28	96709	AR	Cable 3/16" Dia.	Specify in Feet
29	9800	8	Locknut 1/2"-13UNC	
30	9806	1	Hairpin Cotter 0.148"D	
31	9928	5	Locknut 3/8"-16UNC	
32	TA0-902635-0	2	3/16" Cable Clamp	
33	TA500342	1	Cable Pulley 2" Dia. x 54"	
34	902462	1	Bronze Bushing 7/8" Dia. x 1/2"	
35	TA500470	8	External Star Washer 1/2"	
36	TA510000	4	U-Bolt 1/2"-13UNC	
37	TA520060	2	Bar Slide Winch	
38	41422B	1	Quick Fill Mount Bracket	

Self-Leveling Center Section Components

Please visit [www.unverferth.com/parts/](http://www.unverferth.com/parts/) for the most current parts listing.



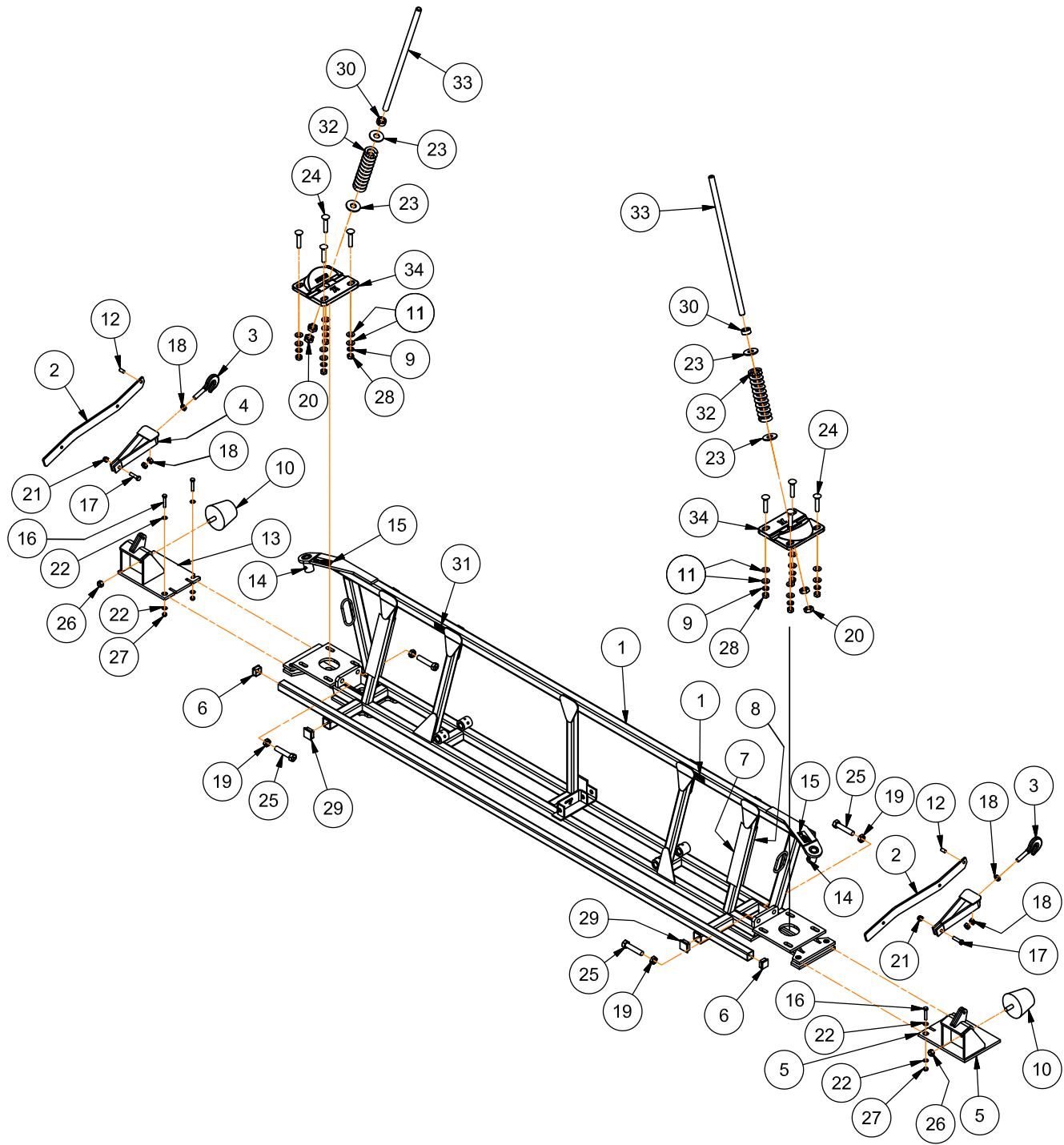
**Self-Leveling Center Section Components**

Please visit [www.unverferth.com/parts/](http://www.unverferth.com/parts/) for the most current parts listing.

ITEM	PART NO.	QTY.	DESCRIPTION	NOTES
1	41190B	1	Center Section Weldment =Black=	Includes Item #2
2	TA500325	4	Bronze Bushing 1.004" O.D. x .753" I.D.	
3	41262B	2	Swing Arm Brace =Black=	
4	41265	2	Swing Arm Shaft with Threaded End	
5	41267B	1	H-Frame Weldment =Black=	
6	9390-033	2	Capscrew, 5/16"-18UNC x 1 3/4" G5	
7	91160	4	Grease Zerk	
8	93459	2	Decal, 8 Hours Grease	
9	9388-025	2	Carriage Bolt 5/16"-18UNC x 1" G5	
10	9390-055	2	Capscrew 3/8"-16UNC x 1" G5	
11	91144-209	2	Spiral Pin 3/8" Dia. x 2 1/2"	
12	9395-019	4	Hex Jam Nut 1"-14UNS	
13	9405-070	2	Flat Washer 5/16" USS	
14	9807	4	Locknut 5/16"-18UNC	
15	9928	4	Locknut 3/8"-16UNC	
16	TA500310	4	Bushing 1 1/2" O.D. x 1" I.D.	
17	TA510008	2	Decal, TA Logo	
18	TA510029	1	Decal, CAUTION (Locking Pin)	
19	TA510031	1	Decal, USA	
20	TA510072	1	U-Bolt 3/8"-16UNC x 2 1/2"	
21	TA510514	1	SMV Emblem	
22	TA510516	1	SMV Bracket	
23	903172-136	2	Machine Screw #10-24UNC x 3/4"	
24	9830-017	2	Hex Nut #10-24UNC	
25	TA520199	2	Pivot Shaft 3/4" Dia. x 6 1/4"	
26	TA522030B	1	Mounting Bracket =Black=	
27	TA580023B	2	Swing Arm Weldment =Black=	Includes Item #28
28	TA500333	2	Top Sleeve Tube	
29	79670B	1	SIS Bracket	Includes Decals
	9008714	1	Decal, SIS (20 MPH)	

Center Section & Breakaway Components

Please visit [www.unverferth.com/parts/](http://www.unverferth.com/parts/) for the most current parts listing.



## 60' MANUAL-FOLD BOOM — Parts

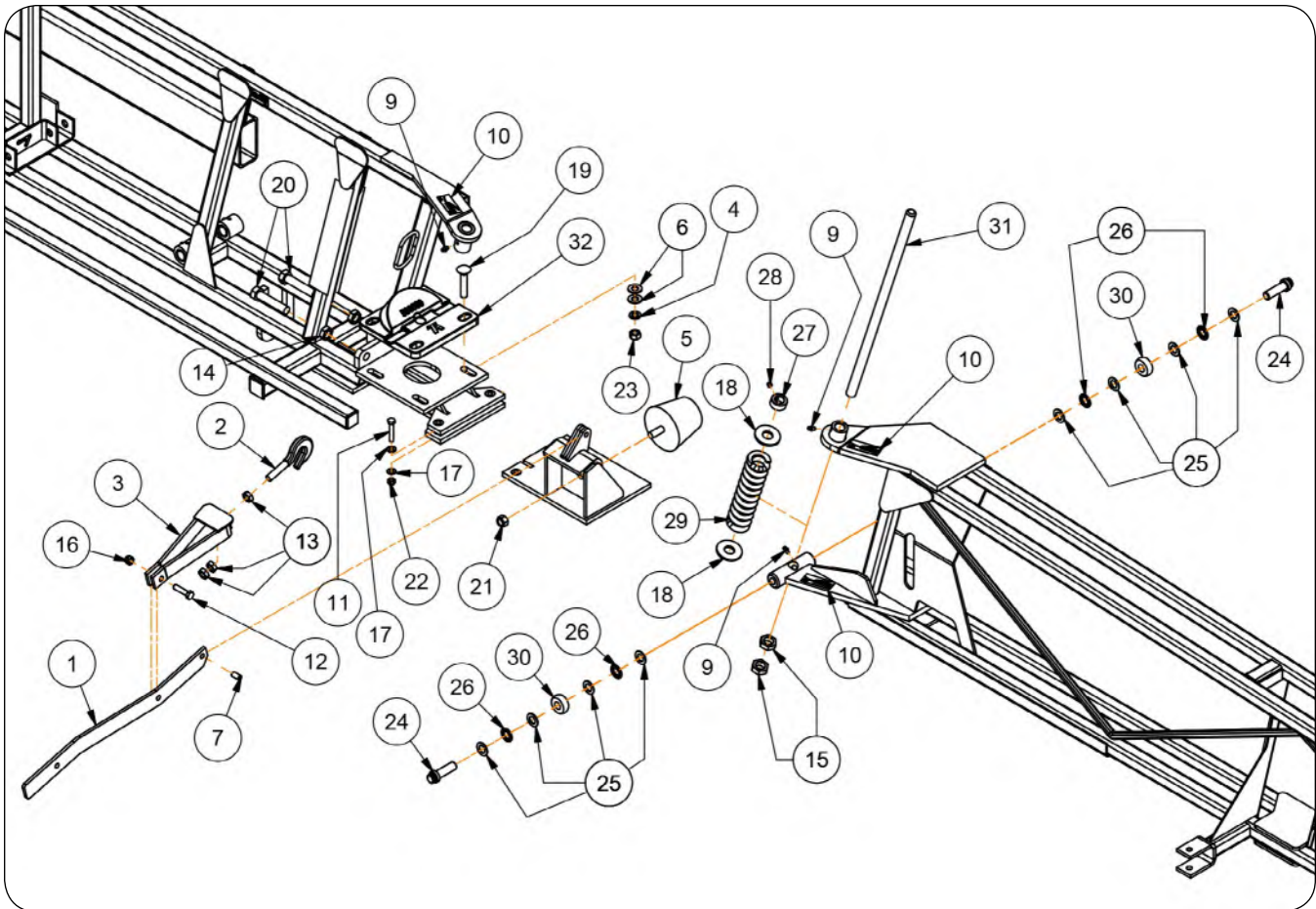
### Center Section & Breakaway Components

Please visit [www.unverferth.com/parts/](http://www.unverferth.com/parts/) for the most current parts listing.

ITEM	PART NO.	QTY.	DESCRIPTION	NOTES
1	41190B	1	Center Section Weldment =Black=	
2	41268B	4	Lever =Black=	
3	41312	4	Hook End	
4	41388B	4	Yoke Bar Weldment =Black=	
5	41414B	1	Latch Weldment Right-Hand =Black=	
6	9000117	10	Plug, 1 1/4" Square	
7	9003126	2	Reflector RED	
8	9003127	2	Reflector AMBER	
9	9005096-025	8	Lock Washer, 1/2"	Grade 8
10	9006063	2	Bumper	
11	902645-086	8	Flat Washer, 1/2"	Grade 8
12	91144-195	4	Spiral Pin, 3/8" Dia. x 3/4"	
13	41413B	1	Latch Weldment Left-Hand =Black=	
14	91160	14	Grease Zerk	
15	93459	6	Decal, 8 Hours Grease	
16	9390-033	4	Capscrew, 5/16"-18UNC x 1 3/4" G5	Grade 5
17	9390-057	4	Capscrew, 3/8"-16UNC x 1 1/2"	Grade 5
18	9395-010	12	Hex Jam Nut, 1/2"-13UNC	
19	9395-014	4	Hex Jam Nut, 5/8"-11UNC	
20	9395-016	4	Hex Jam Nut, 3/4"-10UNC	
21	9398-012	4	Elastic Stop Nut, 3/8"-10UNC	
22	9405-068	8	Flat Washer, 5/16" SAE	
23	9405-106	4	Flat Washer, 3/4" USS	
24	9501407	8	Carriage Bolt, 1/2"-13UNC x 2 1/2"	Grade 8
25	97601	4	Capscrew, 5/8"-11UNC x 3" (Full Threaded)	
26	9800	4	Locknut, 1/2"-13UNC	Grade 5
27	9807	4	Locknut, 5/16"-18UNC	Grade 5
28	98131	8	Locknut, 1/2"-13UNC	Grade 8
29	TA500401	2	Plug, 1 1/2" Square	
30	TA500689	2	Shaft Collar w/Set Screw	
	9399-069	-	Set Screw, 5/16"-18UNC x 1/4"	
31	TA510008	2	Decal, TA Logo	
32	TA510013	2	Breakaway Spring	
33	TA522498	2	Pivot Shaft 3/4" Dia.	
34	TA580030B	2	Pivot Plate =Black=	

**Breakaway Assembly Components**

Please visit [www.unverferth.com/parts/](http://www.unverferth.com/parts/) for the most current parts listing.





## 60' MANUAL-FOLD BOOM — Parts

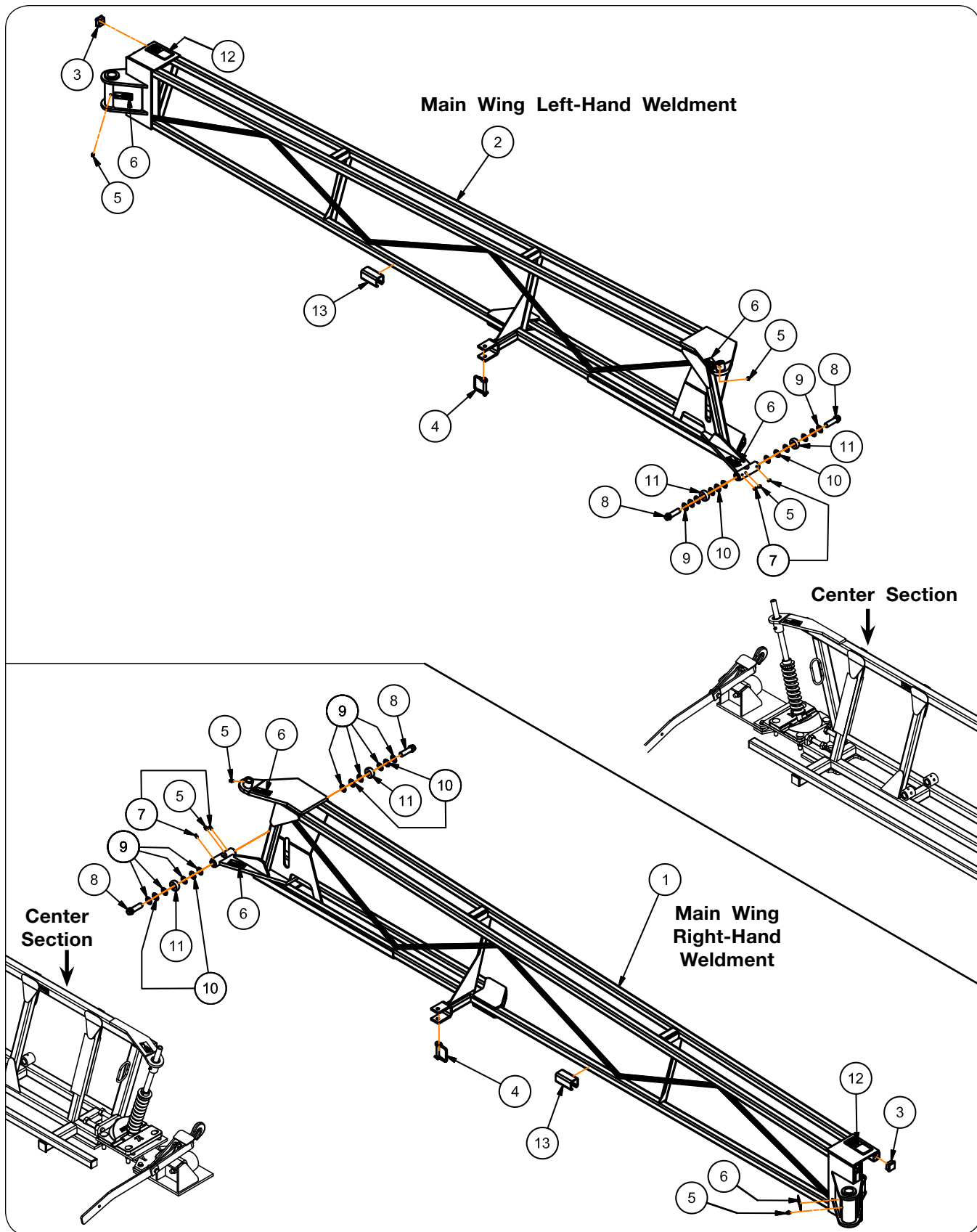
### Breakaway Assembly Components

Please visit [www.unverferth.com/parts/](http://www.unverferth.com/parts/) for the most current parts listing.

ITEM	PART NO.	QTY.	DESCRIPTION	NOTES
1	41268B	2	Lever =Black=	
2	41312	2	Hook End	
3	41388B	2	Yoke Bar Weldment =Black=	
4	9005096-025	8	Lock Washer 1/2" (Heavy - Grade 8)	
5	9006063	2	Rubber Bumper	
6	902645-086	16	Flat Washer, 1/2" SAE (Grade 8)	
7	91144-195	2	Spiral Pin, 3/8" Dia. x 3/4"	
9	91160	6	Grease Zerk	
10	93459	6	Decal, 8 Hours Grease	
11	9390-033	4	Capscrew, 5/16"-18UNC x 1 3/4" G5	Grade 5
12	9390-057	2	Capscrew, 3/8"-16UNC x 1 1/2" (Grade 5)	Grade 5
13	9395-010	6	Hex Jam Nut, 1/2"-13UNC (Grade 5)	
14	9395-014	4	Hex Jam Nut, 5/8"-11UNC	
15	9395-016	4	Hex Jam Nut, 3/4"-10UNC (Grade 5)	
16	9398-012	2	Elastic Stop Nut, 3/8"-16UNC (Grade 5)	
17	9405-070	8	Flat Washer 5/16" USS	
18	9405-106	4	Flat Washer, 3/4" USS	
19	9501407	8	Carriage Bolt, 1/2"-13UNC x 2 1/2" (Grade 8)	
20	97601	4	Capscrew, 5/8"-11UNC x 3" (Full Threaded)	
21	9800	2	Locknut, 1/2"-13UNC (Grade 5)	
22	9807	4	Locknut, 5/16"-18UNC	
23	98131	8	Locknut, 1/2"-13UNC (Grade 8)	
24	TA500197	4	Capscrew, 5/8"-11UNC x 2 5/8" (Grade 8)	
25	TA500316	16	Thrust Washer, 1 3/32" Dia. x 1/16"	
26	TA500321	8	Thrust Bearing, 1 1/8" Dia. x 1/16"	
27	TA500689	2	Shaft Collar, 3/4" ID	
28	9399-069	-	Set Screw, 5/16"-18UNC x 1/4"	
29	TA510013	2	Breakaway Spring 1.875" Dia.	
30	TA510026	4	5/8" Hardened Wheel	
31	TA522498	2	Pivot Shaft Threaded 3/4"-10UNC	
32	TA580030B	2	Pivot Plate =Black=	

### Main Wing Components

Please visit [www.unverferth.com/parts/](http://www.unverferth.com/parts/) for the most current parts listing.



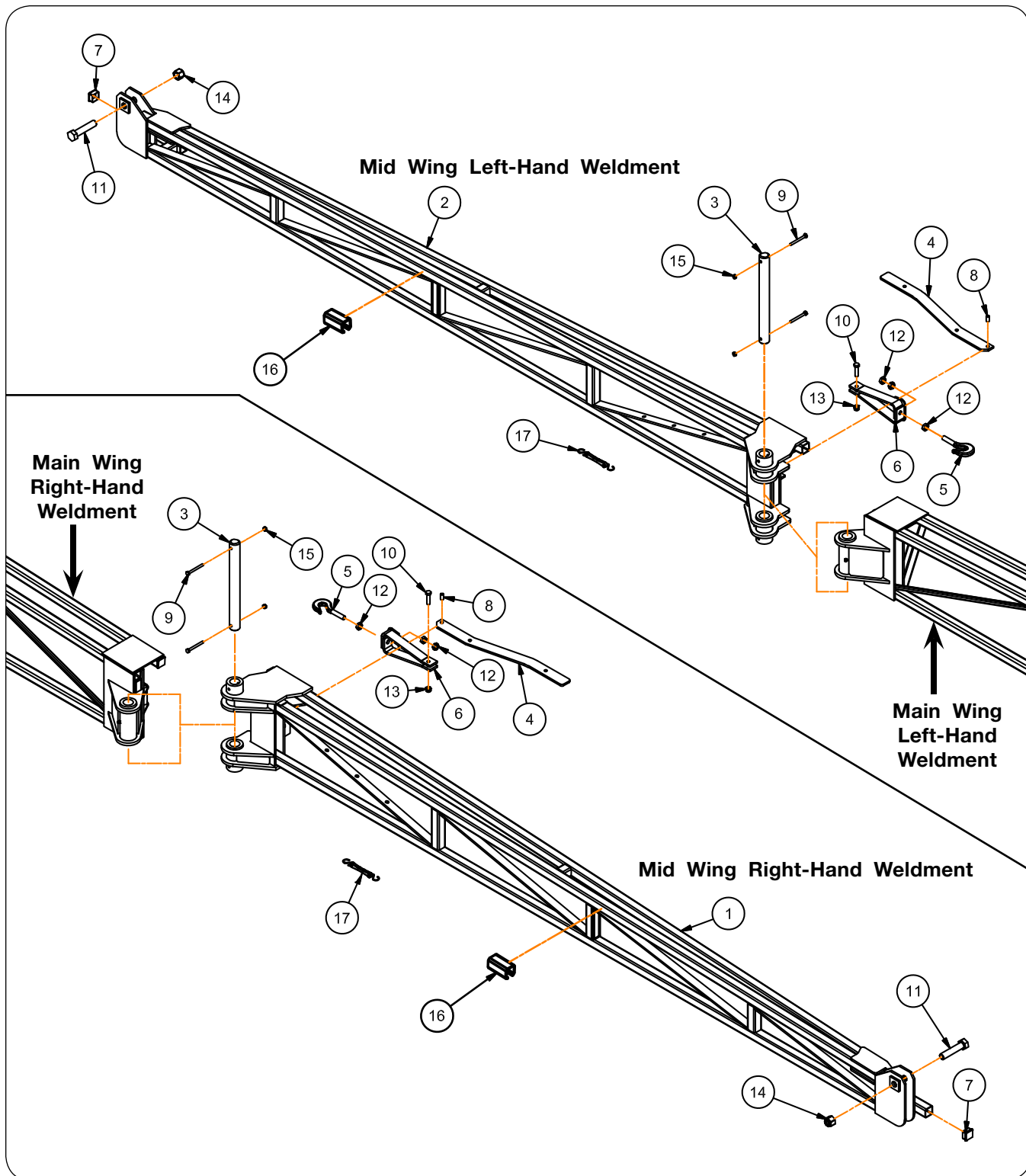
**Main Wing Components**

Please visit [www.unverferth.com/parts/](http://www.unverferth.com/parts/) for the most current parts listing.

ITEM	PART NO.	QTY.	DESCRIPTION	NOTES
1	41035B	1	Main Wing Right-Hand Weldment =Black=	
2	41068B	1	Main Wing Left-Hand Weldment =Black=	
3	9000117	2	Plug 1 1/4" Square	
4	9000938	2	Lynch Pin 3/8" Dia. x 2 1/4"	
5	91160	6	Grease Zerk	
6	93459	4	Decal, 8 Hours Grease	
7	9399-060	4	Set Screw 1/4"-20UNC x 1/2"	
8	TA500197	4	Capscrew 5/8"-11UNC x 2 5/8" (Grade 8)	
9	TA500316	16	Thrust Washer 1 3/32" Dia.	
10	TA500321	8	Thrust Bearing 1 1/8" Dia. x 1/16"	
11	TA510026	2	5/8" Hardened Wheel	
12	95839	2	Decal, WARNING "Pinch Point"	
13	TA510101	2	Tube Protector	

Mid Wing Components

Please visit [www.unverferth.com/parts/](http://www.unverferth.com/parts/) for the most current parts listing.



**Mid Wing Components**

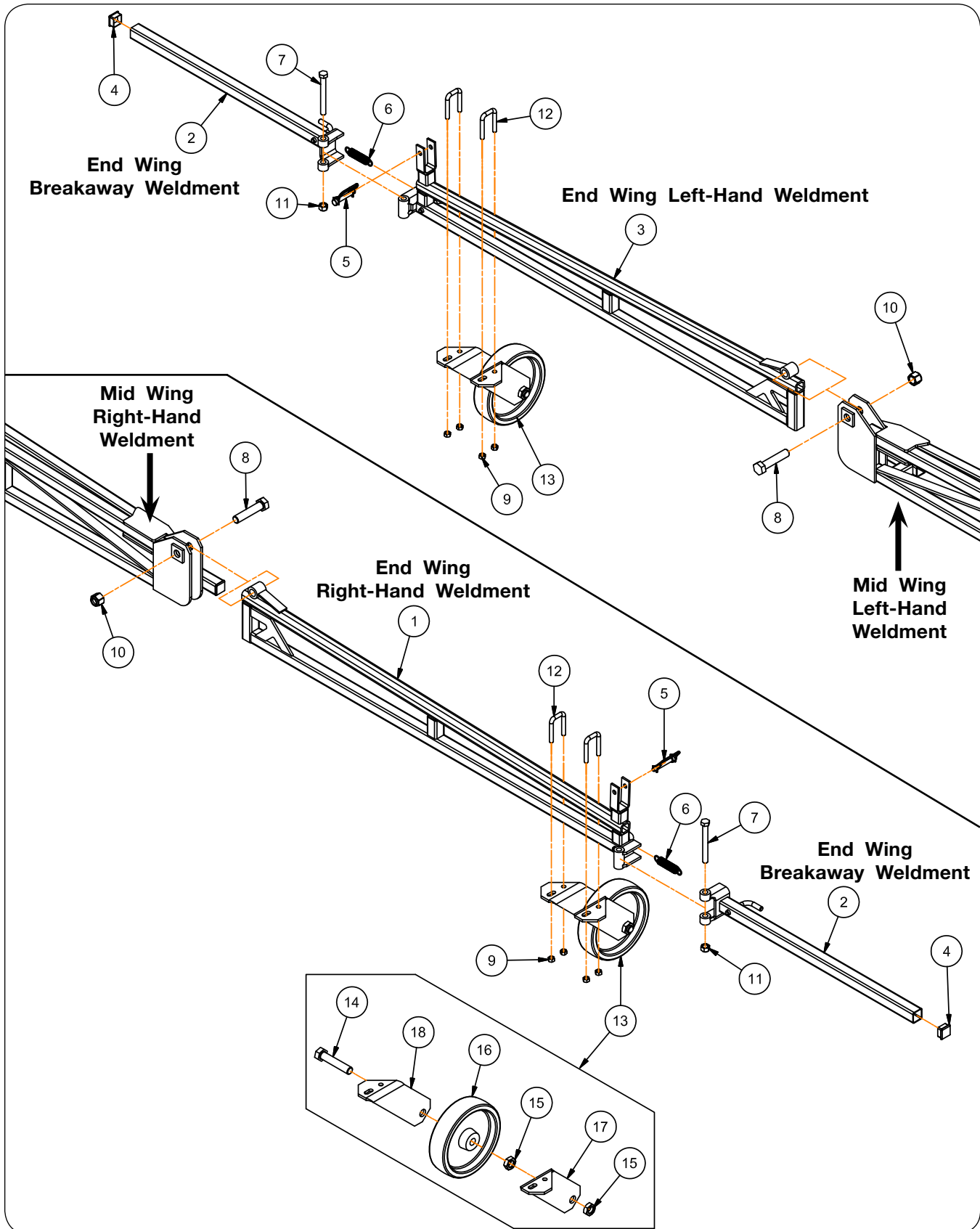
Please visit [www.unverferth.com/parts/](http://www.unverferth.com/parts/) for the most current parts listing.

ITEM	PART NO.	QTY.	DESCRIPTION	NOTES
1	41011B	1	Mid Wing Right-Hand Weldment =Black=	
2	41063B	1	Mid Wing Left-Hand Weldment =Black=	
3	41073	2	Hinge Pin 1 1/4" Dia. x 12 3/4"	
4	41268B	4	Lever =Black=	
5	41312	4	Hook End	
6	41388B	4	Yoke Bar Weldment =Black=	
7	9000117	10	Plug 1 1/4" Square	
8	91144-195	4	Spiral Pin 3/8" Dia. x 3/4"	
9	9390-011	4	Capscrew 1/4"-20UNC x 2 1/2"	
10	9390-057	8	Capscrew 3/8"-16UNC x 1 1/2"	
11	9390-151	2	Capscrew 3/4"-10UNC x 3 1/2"	
12	9395-010	16	Hex Jam Nut 1/2"-13UNC	
13	9398-012	4	Elastic Stop Nut 3/8"-16UNC	
14	9398-021	2	Elastic Stop Nut 3/4"-10UNC	
15	9936	4	Locknut 1/4"-20UNC	
16	TA510101	2	Tube Protector	
17	9501824	2	Rubber Strap with Hooks	

# 60' MANUAL-FOLD BOOM — Parts

## End Wing Components

Please visit [www.unverferth.com/parts/](http://www.unverferth.com/parts/) for the most current parts listing.



## 60' MANUAL-FOLD BOOM — Parts

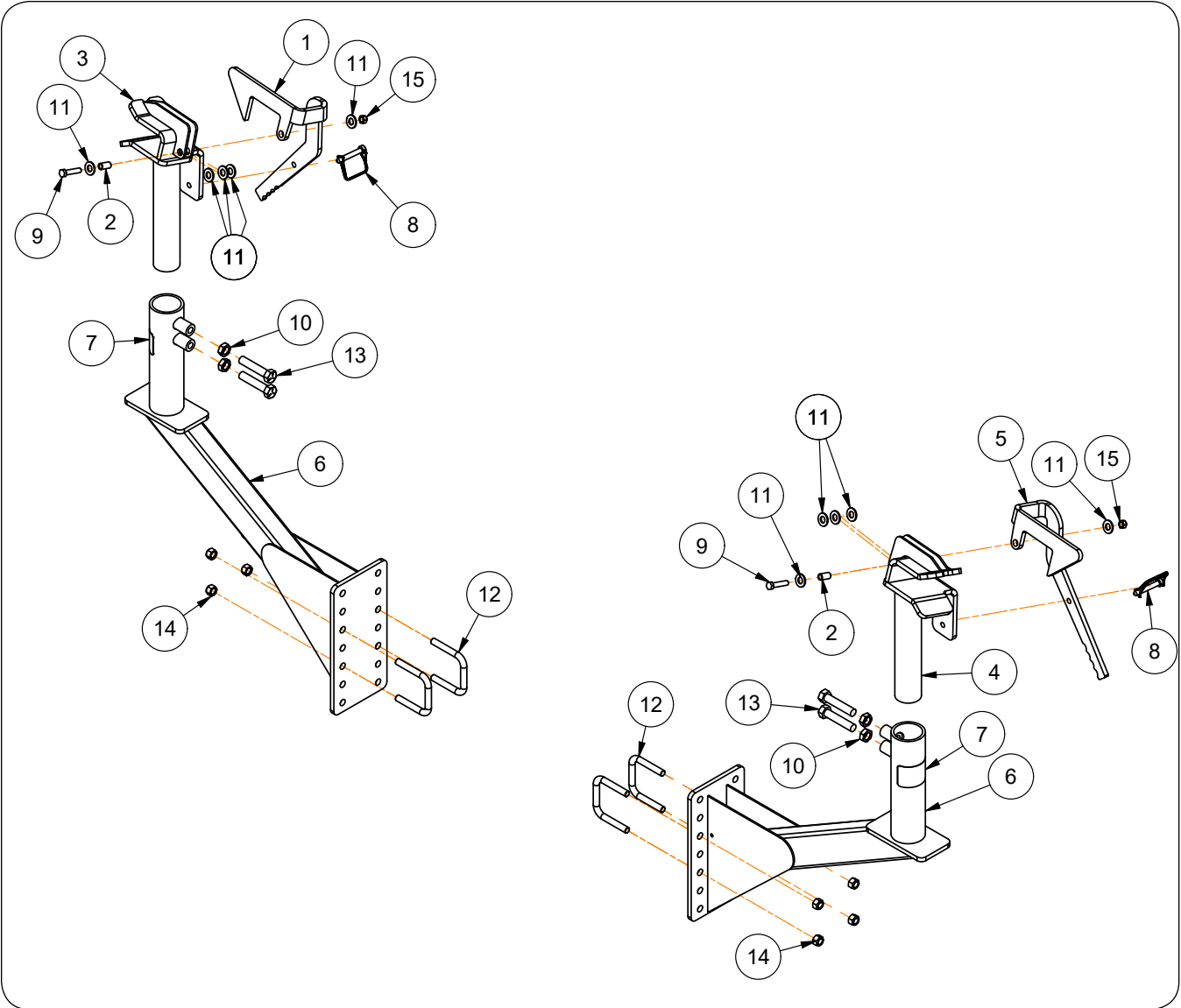
### End Wing Components

Please visit [www.unverferth.com/parts/](http://www.unverferth.com/parts/) for the most current parts listing.

ITEM	PART NO.	QTY.	DESCRIPTION	NOTES
1	41007B	1	End Wing Right-Hand Weldment =Black=	
2	41294B	2	End Wing Breakaway Weldment =Black=	
3	41297B	1	End Wing Left-Hand Weldment =Black=	
4	9000117	2	Plug 1 1/4" Square	
5	9000938	2	Lynch Pin 3/8" Dia. x 2 1/4"	
6	903234	2	Extension Spring 3/4" Dia. (Stainless Steel)	
7	9390-112	2	Capscrew 1/2"-13UNC x 4 1/2"	Grade 5
8	9390-151	2	Capscrew 3/4"-10UNC x 3 1/2"	Grade 5
9	91263	8	Nut/Large Flange 3/8"-16UNC	
10	9398-021	2	Elastic Stop Nut 3/4"-10UNC	
11	9800	2	Locknut 1/2"-13UNC	
12	TA510072	4	U-Bolt 3/8"-16UNC x 2 1/2"	
13	403091	2	Skid Wheel Assembly	
14	900900-152	1	Capscrew 3/4"-10UNC x 3 3/4" (Stainless Steel)	
15	900911-016	2	Hex Jam Nut 3/4"-10UNC (Stainless Steel)	
16	TA510232	1	8" Poly Skid Wheel	
17	TA522038B	1	Right-Hand Wheel Mounting Plate =Black=	
18	TA522122B	1	Left-Hand Wheel Mounting Plate =Black=	

Boom Support Components

Please visit [www.unverferth.com/parts/](http://www.unverferth.com/parts/) for the most current parts listing.





## 60' MANUAL-FOLD BOOM — Parts

### Boom Support Components

Please visit [www.unverferth.com/parts/](http://www.unverferth.com/parts/) for the most current parts listing.

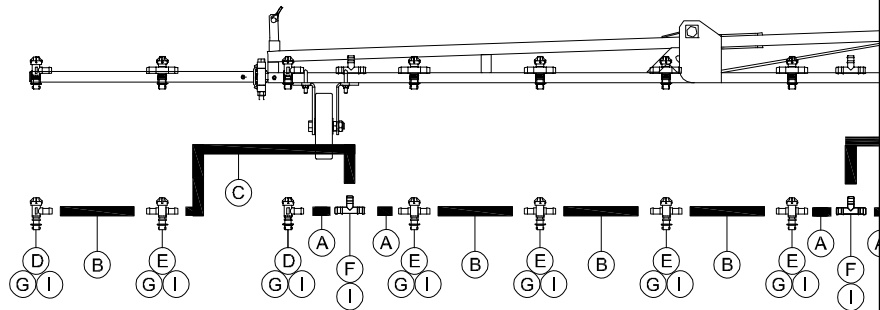
ITEM	PART NO.	QTY.	DESCRIPTION	NOTES
1	2004311B	1	Boom Latch Left-Hand =Black=	
2	2004314	2	Tube 1/2" Dia. x 15/16"	
3	2004316B	1	Boom Rest Weldment Right-Hand =Black=	
4	2004318B	1	Boom Rest Weldment Left-Hand =Black=	
5	2005383B	1	Boom Latch Right-Hand =Black=	
6	41056B	2	Boom Support Weldment =Black=	
7	95839	1	Decal, WARNING "Pinch Point"	
8	9000938	2	Lynch Pin 3/8" Dia. x 2 1/4"	
9	9390-058	2	Capscrew 3/8-16UNC x 1 3/4" (Grade 5)	
10	9395-014	4	Hex Jam Nut 5/8"-11UNC	
11	9405-086	4	Flat Washer 1/2" SAE	
12	96566	4	U-Bolt 1/2"-13UNC	
13	97601	4	Capscrew 5/8"-11UNC x 3" (Full Threaded)	
14	9800	8	Locknut 1/2"-13UNC	
15	9928	2	Locknut 3/8"-16UNC	

# 60' MANUAL-FOLD BOOM — Parts

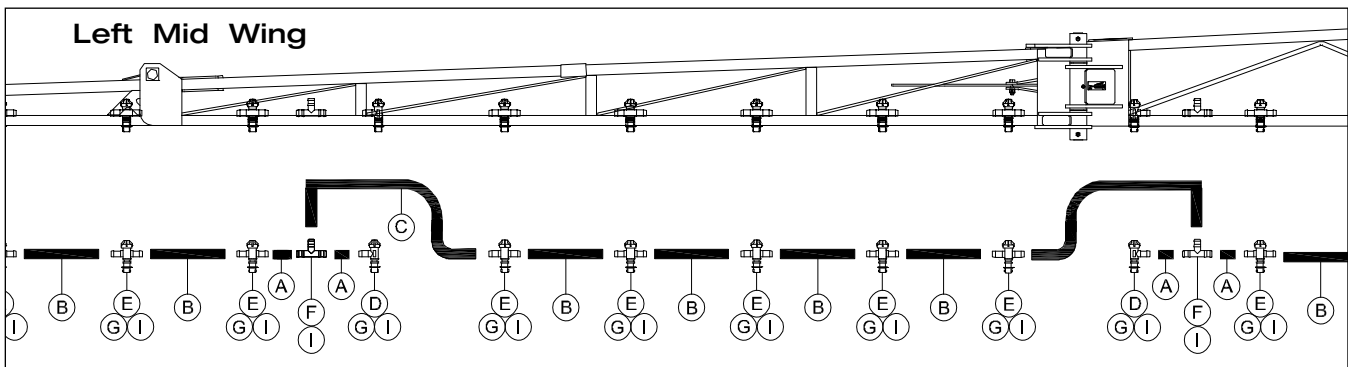
## 60' Boom Line Plumbing - 3 Section - 15" Spacing

Please visit [www.unverferth.com/parts/](http://www.unverferth.com/parts/) for the most current parts listing.

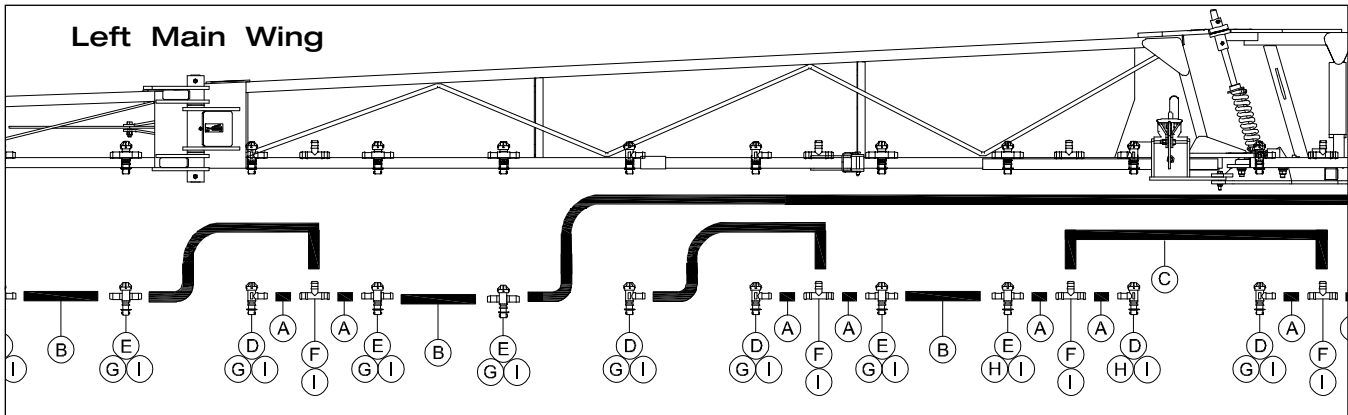
### Left End Wing



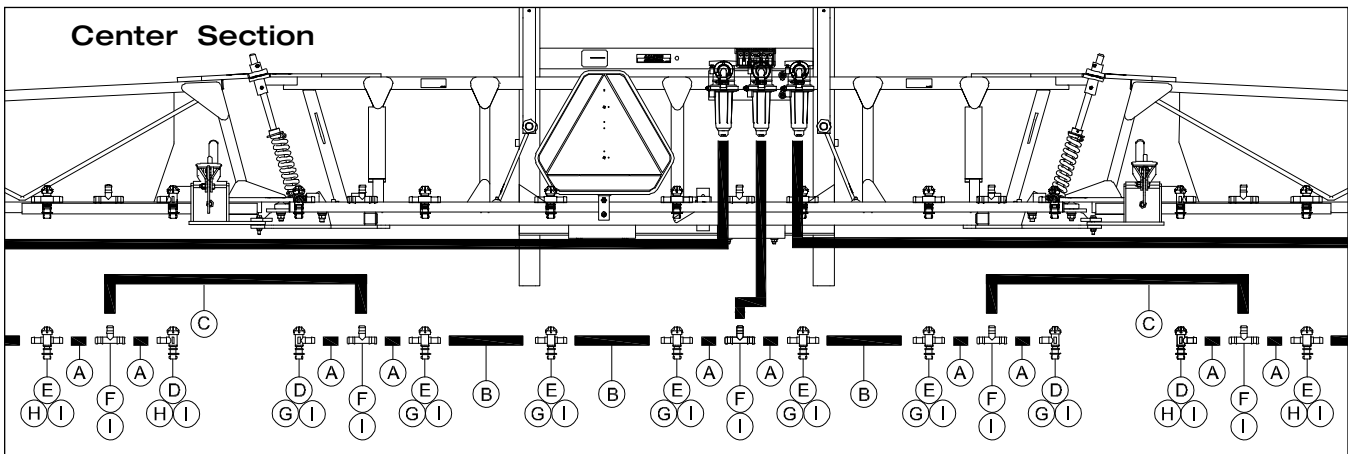
### Left Mid Wing



### Left Main Wing



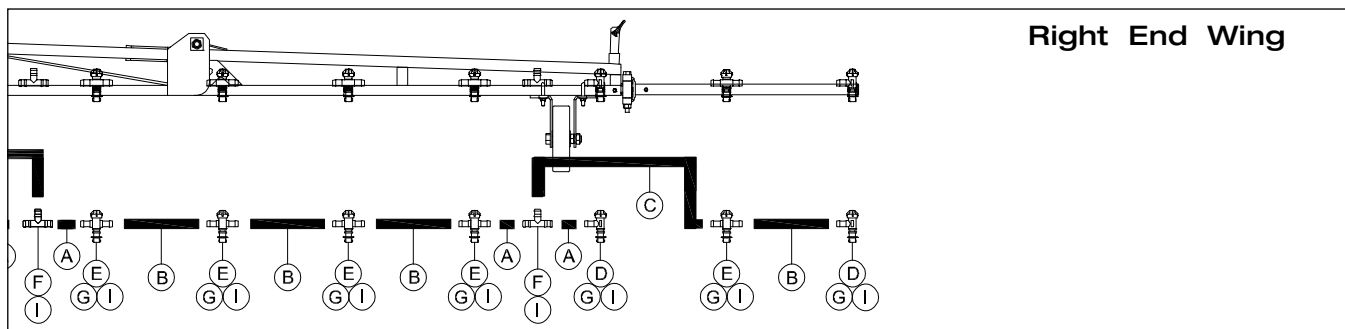
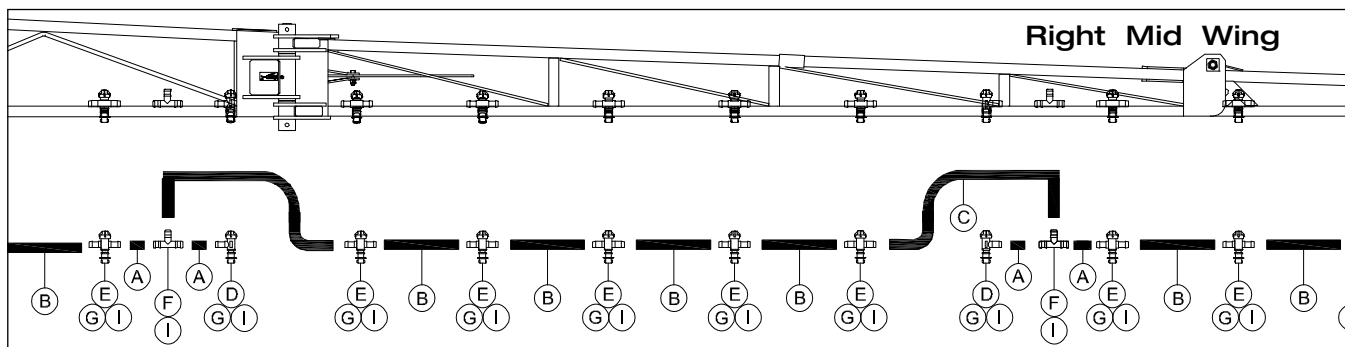
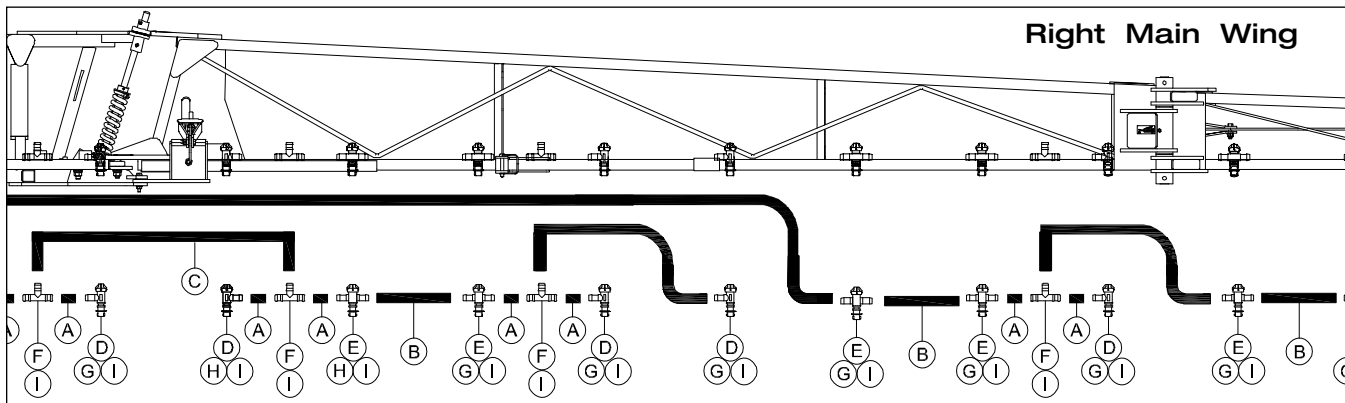
### Center Section









# 60' MANUAL-FOLD BOOM — Parts

## 60' Boom Line Plumbing - 3 Section - 15" Spacing

Please visit [www.unverferth.com/parts/](http://www.unverferth.com/parts/) for the most current parts listing.



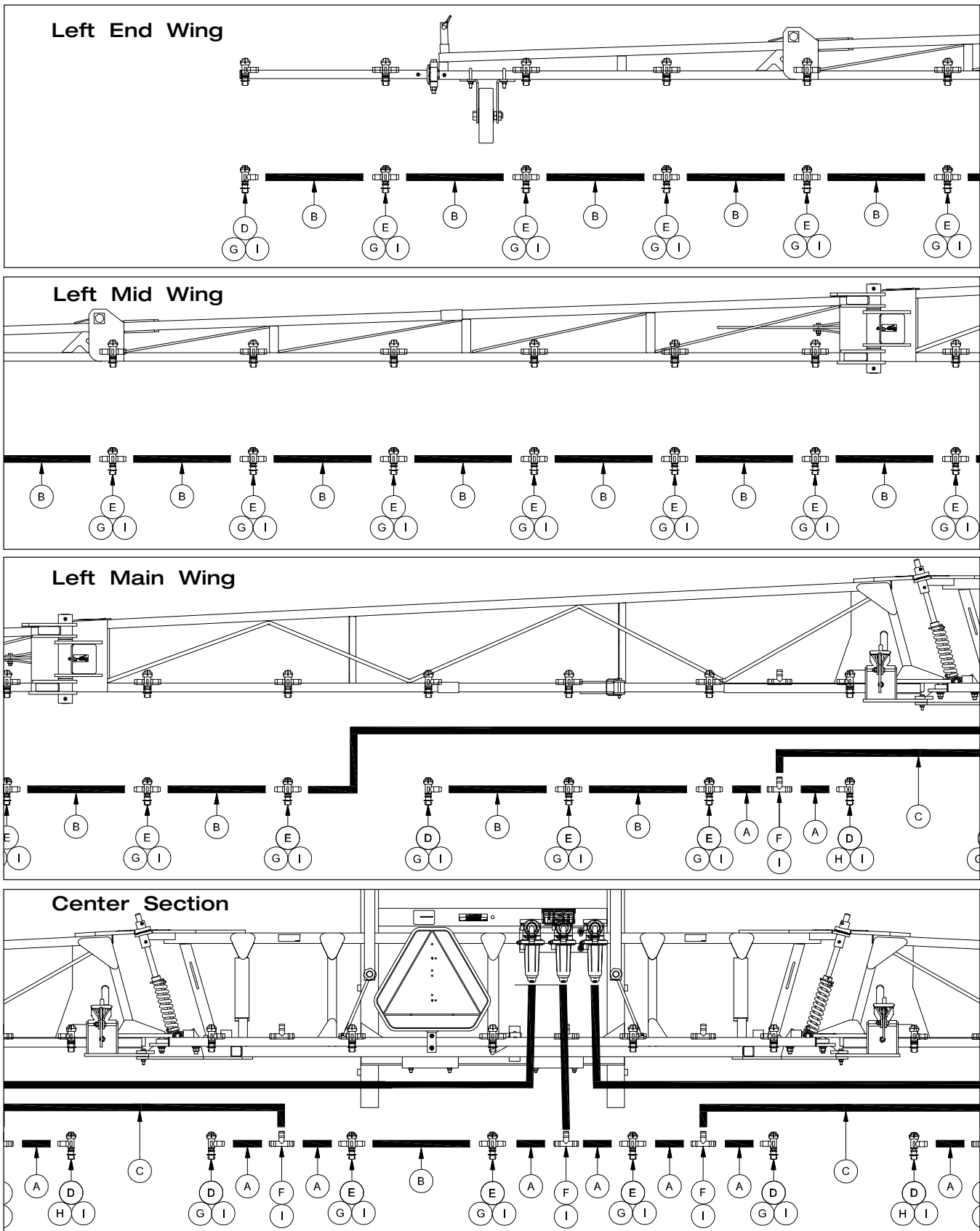
ITEM	PART NO.	QTY.	DESCRIPTION	NOTE
A	TA806250	22	6 1/2" EPDM Hose	Specify Length in Feet
B		29	14" EPDM Hose	
C		6	37" EPDM Hose	
D 	TA886010	16	90° Elbow Body	
E 	TA886025	33	Tee Body	
F 	TA814891	13	Hose Barb Tee	
G 	TA880027	45	Nozzle Clamp 1 1/4"	
H 	TA880031	4	Nozzle Clamp 1 1/2"	
I 	TA800910	124	Hose Clamp SCS12	

"BOOM CAL" Monitor Settings		
SECTION 1	SECTION 2	SECTION 3
240"	255"	240"

# 60' MANUAL-FOLD BOOM — Parts

## 60' Boom Line Plumbing - 3 Section - 20" Spacing

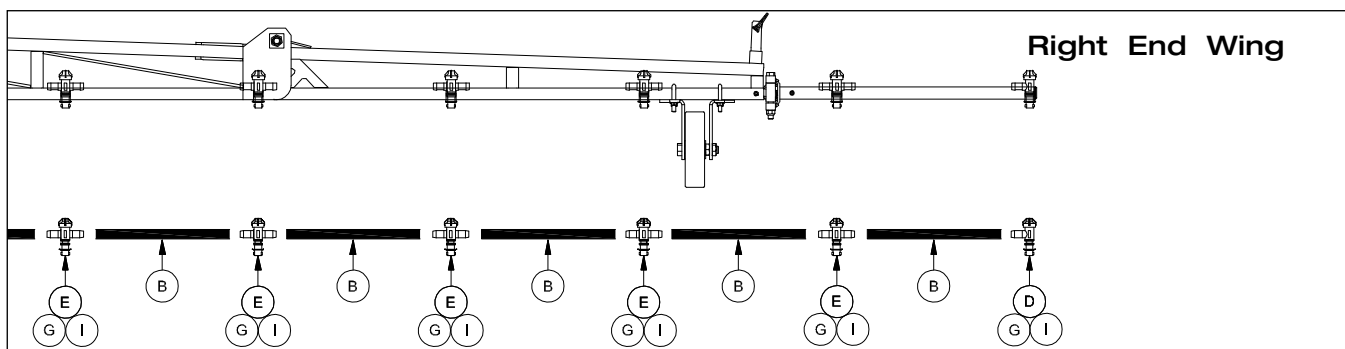
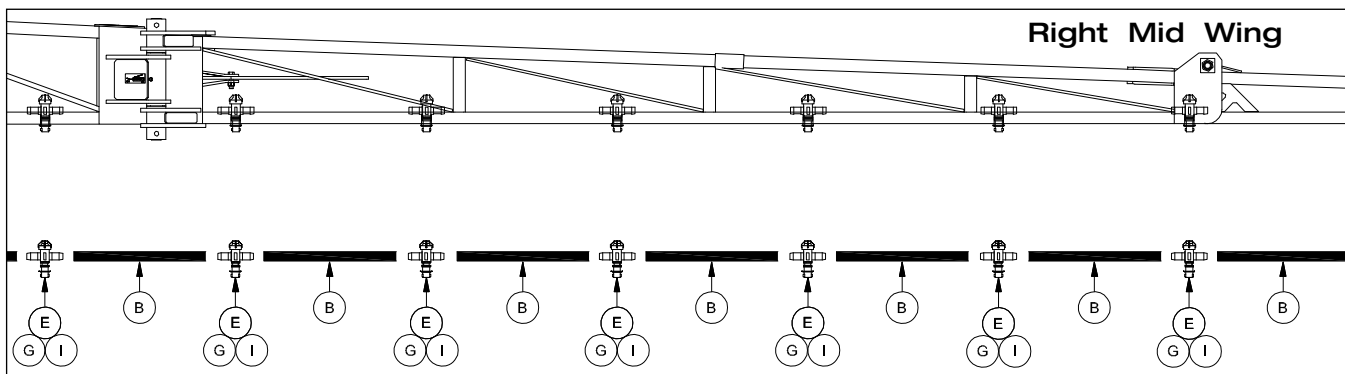
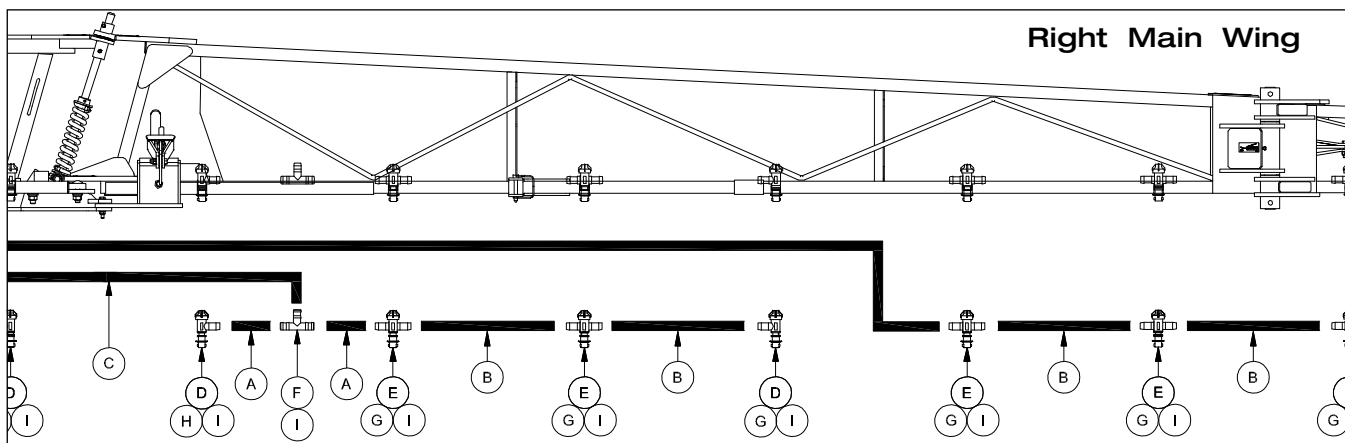
Please visit [www.unverferth.com/parts/](http://www.unverferth.com/parts/) for the most current parts listing.









# 60' MANUAL-FOLD BOOM — Parts

## 60' Boom Line Plumbing - 3 Section - 20" Spacing

Please visit [www.unverferth.com/parts/](http://www.unverferth.com/parts/) for the most current parts listing.



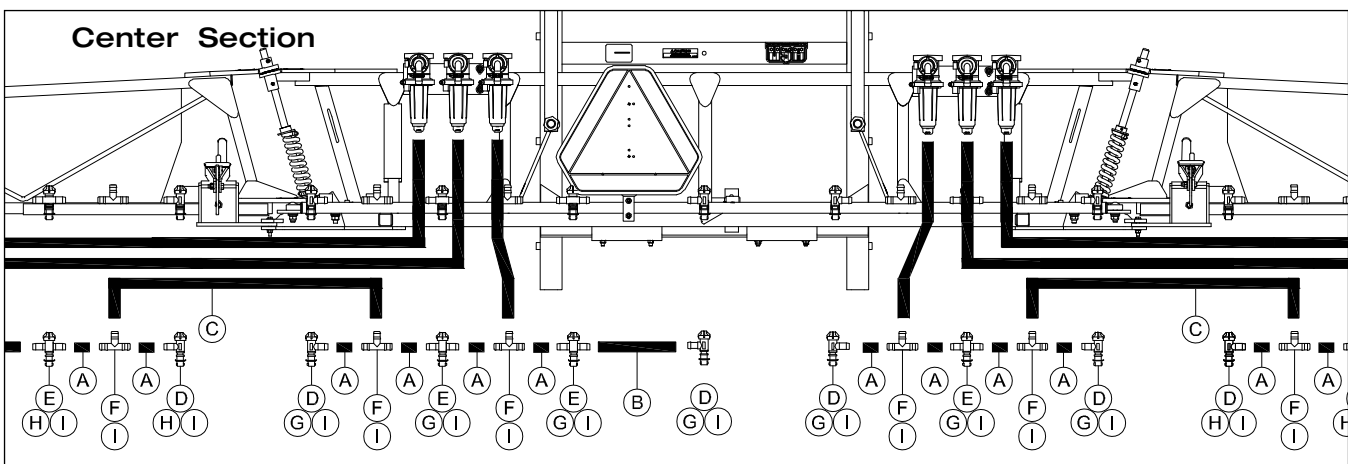
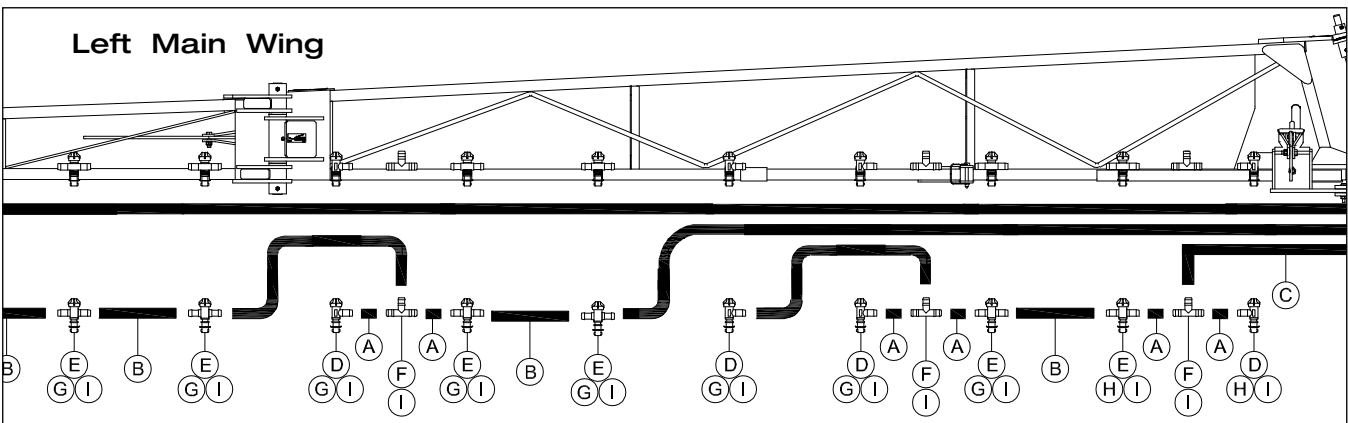
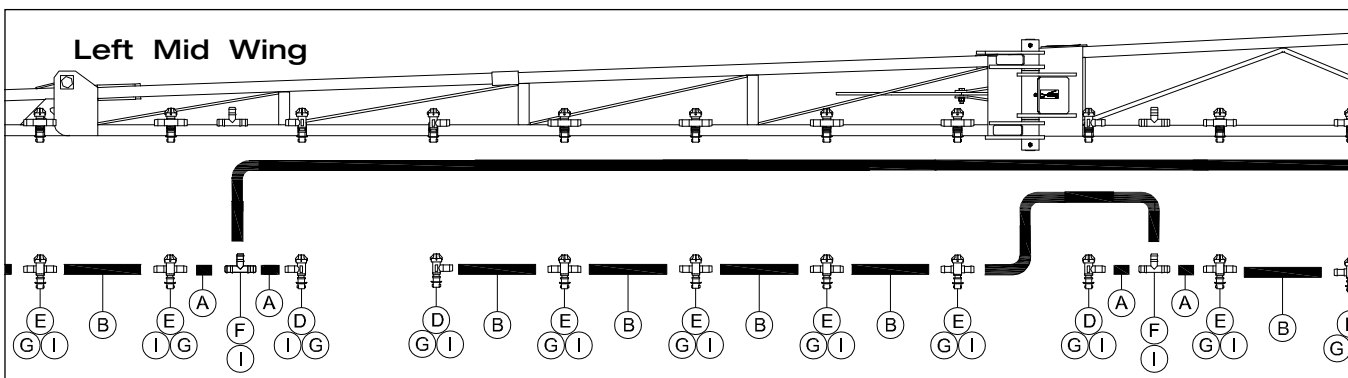
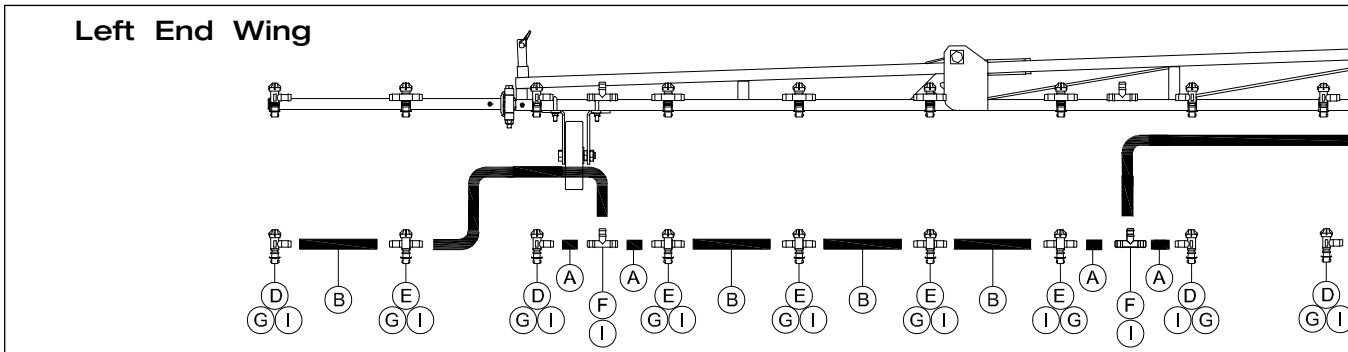
ITEM	PART NO.	QTY.	DESCRIPTION	NOTE
A	TA806250	22	9 1/2" EPDM Hose	Specify Length in Feet
B		17	19" EPDM Hose	
C		6	37" EPDM Hose	
D 	TA886010	8	90° Elbow Body	
E 	TA886025	29	Tee Body	
F 	TA814891	5	Hose Barb Tee	
G 	TA880027	35	Nozzle Clamp 1 1/4"	
H 	TA880031	2	Nozzle Clamp 1 1/2"	
I 	TA800910	84	Hose Clamp SCS12	

"BOOM CAL" Monitor Settings		
SECTION 1	SECTION 2	SECTION 3
240"	260"	240"

# 60' MANUAL-FOLD BOOM — Parts

## 60' Boom Line Plumbing - 6 Section - 15" Spacing

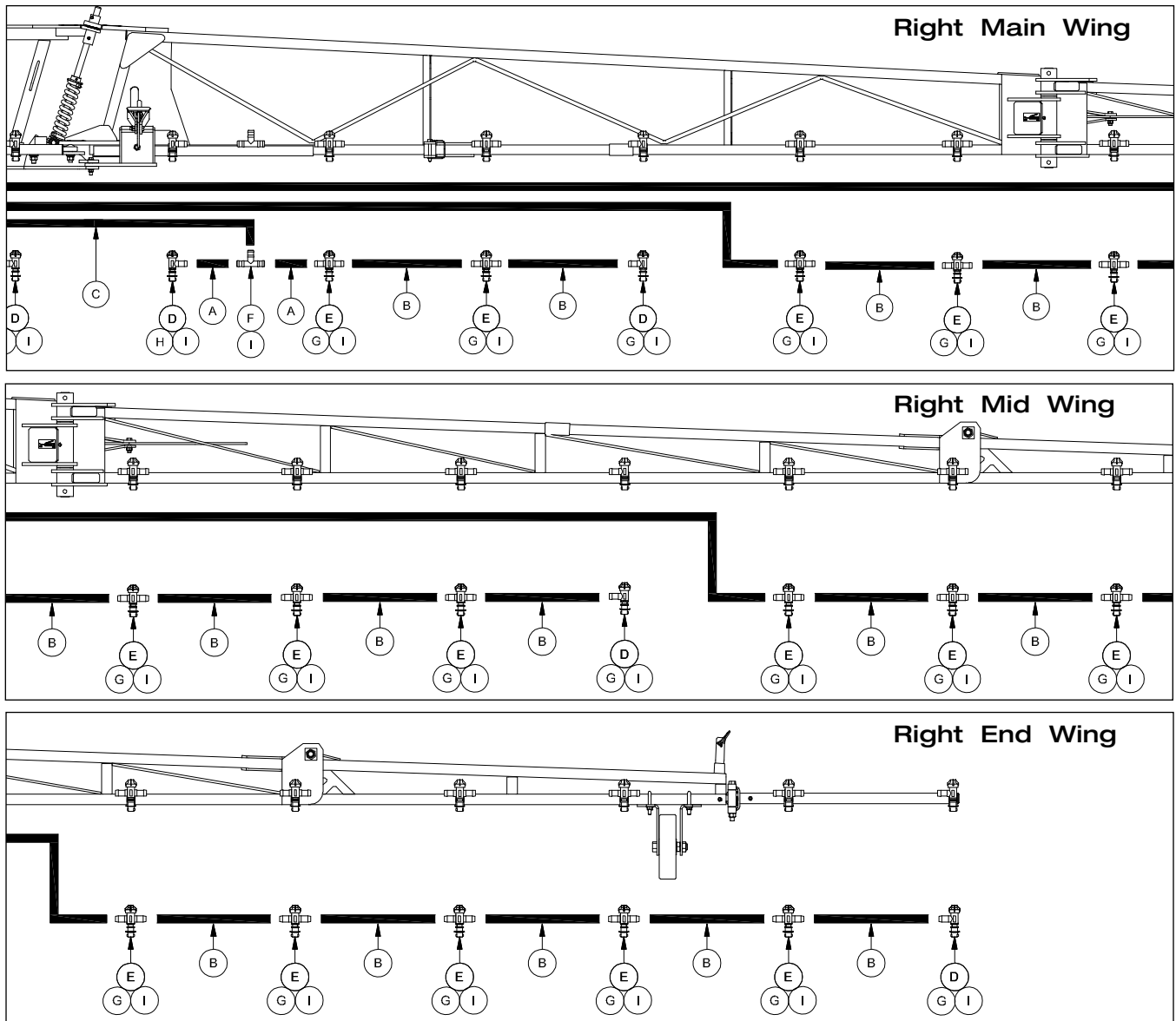
Please visit [www.unverferth.com/parts/](http://www.unverferth.com/parts/) for the most current parts listing.




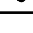




# 60' MANUAL-FOLD BOOM — Parts

## 60' Boom Line Plumbing - 6 Section - 15" Spacing

Please visit [www.unverferth.com/parts/](http://www.unverferth.com/parts/) for the most current parts listing.



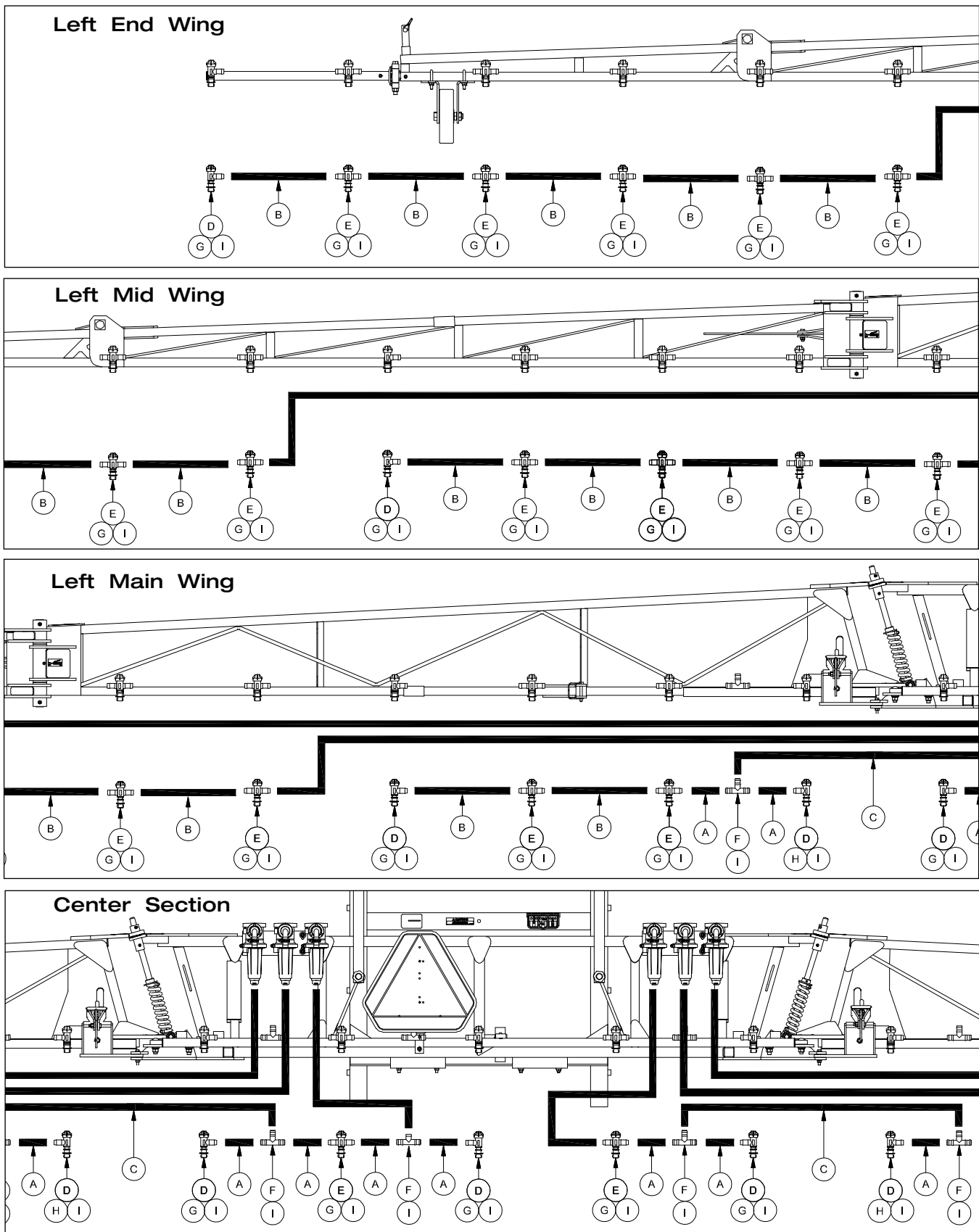
ITEM	PART NO.	QTY.	DESCRIPTION	NOTE
A	TA806250	24	6 1/2" EPDM Hose	Specify Length in Feet
B		24	14" EPDM Hose	
C		6	37" EPDM Hose	
D 	TA886010	20	90° Elbow Body	
E 	TA886025	29	Tee Body	
F 	TA814891	14	Hose Barb Tee	
G 	TA880027	45	Nozzle Clamp 1 1/4"	
H 	TA880031	4	Nozzle Clamp 1 1/2"	
I 	TA800910	126	Hose Clamp SCS12	

"BOOM CAL" Monitor Settings					
SECTION 1	SECTION 2	SECTION 3	SECTION 4	SECTION 5	SECTION 6
120"	120"	135"	120"	120"	120"

# 60' MANUAL-FOLD BOOM — Parts

## 60' Boom Line Plumbing - 6 Section - 20" Spacing

Please visit [www.unverferth.com/parts/](http://www.unverferth.com/parts/) for the most current parts listing.

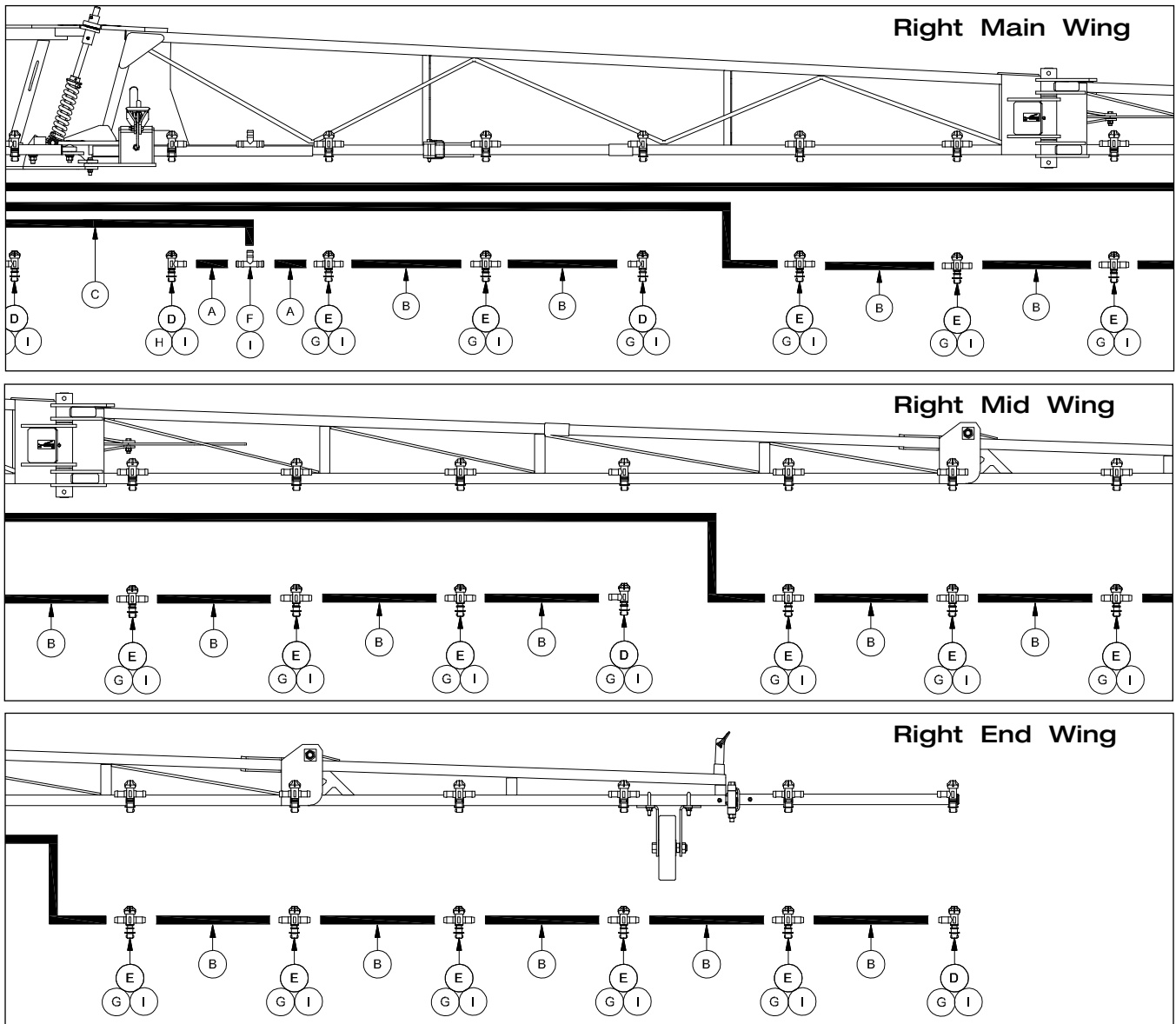










# 60' MANUAL-FOLD BOOM — Parts

## 60' Boom Line Plumbing - 6 Section - 20" Spacing

Please visit [www.unverferth.com/parts/](http://www.unverferth.com/parts/) for the most current parts listing.

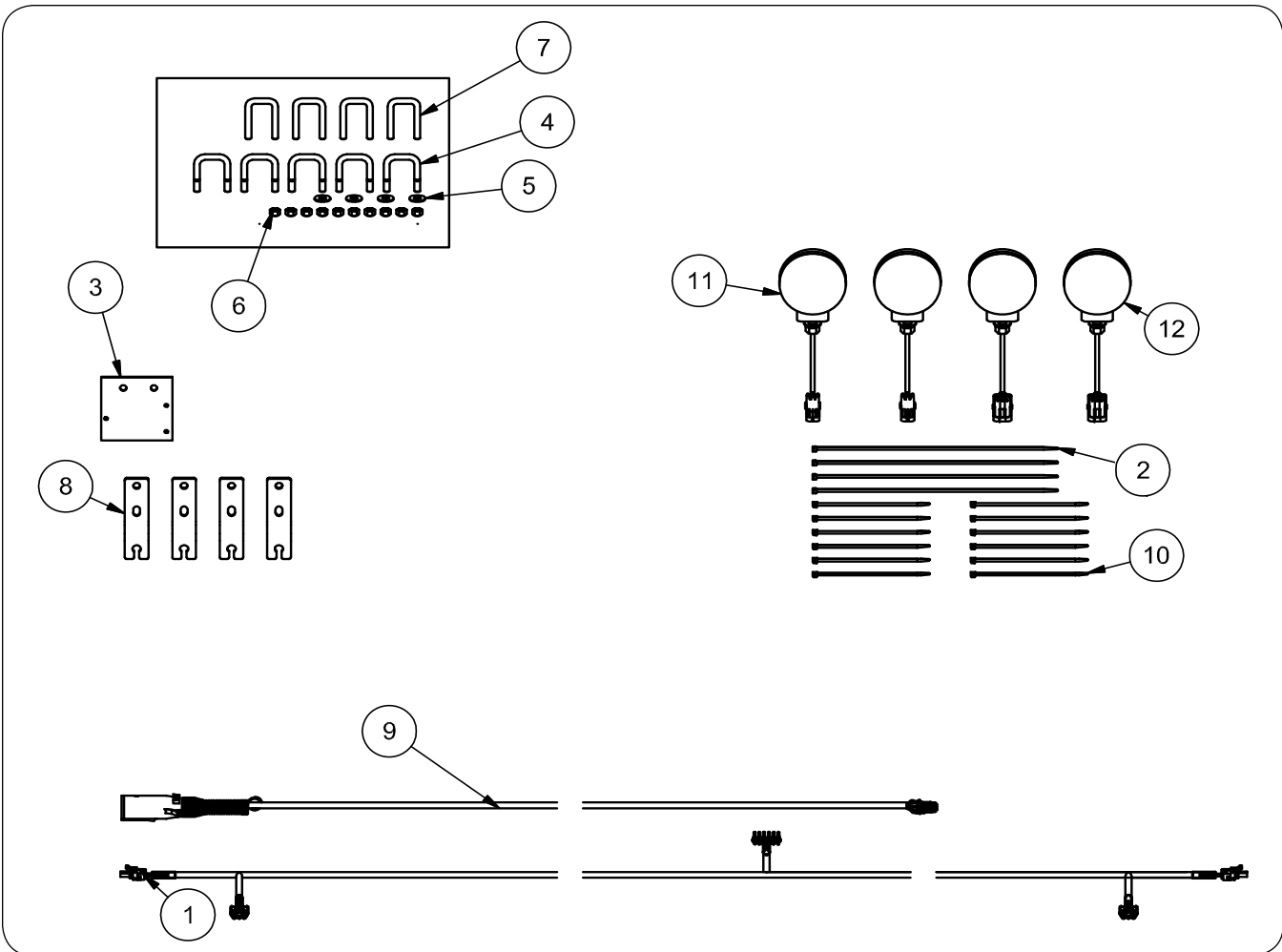


ITEM	PART NO.	QTY.	DESCRIPTION	NOTE
A	TA806250	20	9 1/2" EPDM Hose	Specify Length in Feet
B		14	19" EPDM Hose	
C		6	37" EPDM Hose	
D 	TA886010	11	90° Elbow Body	
E 	TA886025	26	Tee Body	
F 	TA814891	5	Hose Barb Tee	
G 	TA880027	35	Nozzle Clamp 1 1/4"	
H 	TA880031	2	Nozzle Clamp 1 1/2"	
I 	TA800910	84	Hose Clamp SCS12	

"BOOM CAL" Monitor Settings					
SECTION 1	SECTION 2	SECTION 3	SECTION 4	SECTION 5	SECTION 6
120"	120"	140"	120"	120"	120"

Light Components

Please visit [www.unverferth.com/parts/](http://www.unverferth.com/parts/) for the most current parts listing.



**Light Components**

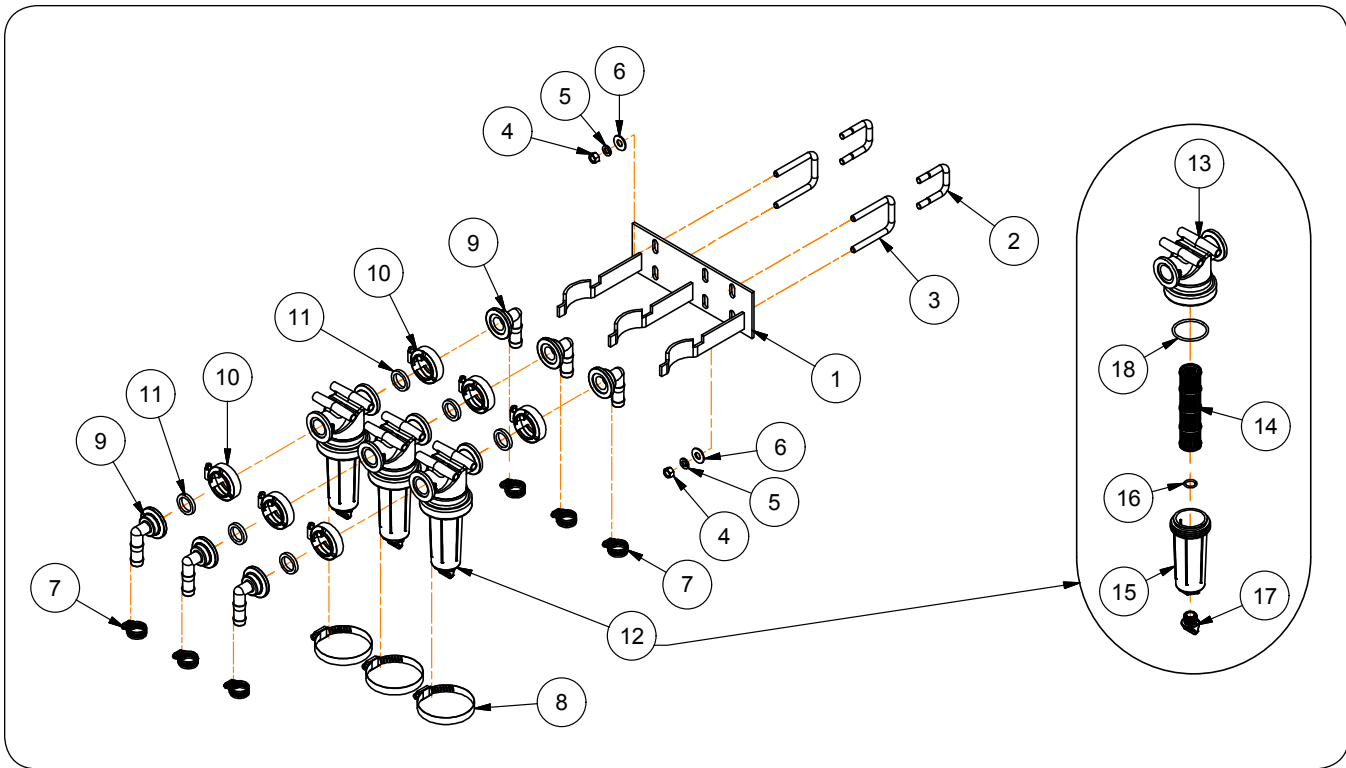
Please visit [www.unverferth.com/parts/](http://www.unverferth.com/parts/) for the most current parts listing.

ITEM	PART NO.	QTY.	DESCRIPTION	NOTES
	41332B	-	Light Kit	
1	22790	1	Wiring Harness 132" (3-T)	
2	94037	4	Cable Tie 15 1/2" Long	
3	40785B	1	Mounting Bracket	
4	91163	5	U-Bolt 3/8-16UNC x 2 1/4	
5	9405-076	4	Flat Washer 3/8" USS	
6	9928	10	Locknut 3/8-16UNC	
7	TA510072	4	U-Bolt 3/8-16UNC x 2 1/2	
8	40849B	4	Mounting Plate	
9	41333	1	Main Wiring Harness 180"	
10	9000106	12	Cable Tie 6" Long	
11	9003876	2	Light - Round Amber	
12	9003877	2	Light - Round Red	

# 60' MANUAL-FOLD BOOM — Parts

## Boom Strainer Kit #TA300350 - 3 & 6 Section Plumbing

Please visit [www.unverferth.com/parts/](http://www.unverferth.com/parts/) for the most current parts listing.



ITEM	PART NO.	QTY.	DESCRIPTION	NOTES
1	TA540533B	1	Strainer Bracket =Black=	
2	91163	2	U-Bolt 3/8-16UNC x 2 1/4 (1.93" Center to Center)	
3	TA510095	2	U-Bolt 3/8-16UNC x 3 1/4 (2.37" Center to Center)	
4	9394-006	4	Hex Nut 3/8-16UNC	
5	9404-021	4	Lock Washer 3/8"	
6	9405-076	4	Flat Washer 3/8" USS	
7	TA800910	6	Hose Clamp 1/2" SAE (SZ 12)	
8	TA800924	3	Hose Clamp 2 1/2" (SC-48)	
9	TA815017	6	90° Elbow 1" Flange x 3/4" Hose Barb	
10	TA815026	6	Flange Clamp 1" Worm Screw	
11	TA815029	6	Gasket/Seal (1" EPDM Flange)	
12	TA815081	3	Strainer Assembly 1" Flange, 50 Mesh	Includes Items 13 through 18
13	TA812141	1	Strainer Head	
14	TA812137	1	50 Mesh Screen	
15	TA812142	1	Strainer Bowl	
16	TA812123	1	O-Ring	
17	N/A	1	Clean Out Plug	
18	TA812143	1	Strainer Gasket	

**Notes**

**Please visit [www.unverferth.com/parts/](http://www.unverferth.com/parts/) for the most current parts listing.**

Empty rounded rectangular box for notes.



***Unverferth***<sup>®</sup>

***Manufacturing Company, Inc.***

[www.unverferth.com](http://www.unverferth.com)