



# EXTREME REACH ENHANCED LINE OF SIGHT



**X**TREME

**19-SERIES**

SINGLE-AUGER GRAIN CARTS

**FRONT-FOLDING  
GRAIN CARTS**

**INNOVATING  
THE FUTURE OF  
AGRICULTURE**

MODELS 1519, 1319, 1119 AND 1019  
[UMEQUIP.COM](http://UMEQUIP.COM)



# EXTREME REACH AND DURABILITY

## WITH UNMATCHED FRONT-FOLDING CORNER-AUGER PERFORMANCE

The lineup of **Unverferth® X-TREME®** grain carts has never been more user friendly and efficient for handling your harvest.

All X-TREME® grain carts feature a patented auger that allows the upper portion to store diagonally along the front of the cart for extreme auger reach, beyond the cart's hitch. You will experience extreme unloading efficiency with a 21" diameter auger in the sump area that transitions into a 20" diameter auger for increased unloading efficiency at speeds up to 650 bushels per minute.

### Features/Benefits

- Capacities of 1,550, 1,330, 1,100 and 1,000 bushels
- The single front-folding, corner-mounted auger is specifically designed to position the auger further to the front and to the side for enhanced line of sight from the tractor cab
- The standard four-way, hydraulic-controlled downspout features over 3' 8" of inward/outward and side-to-side movement for easily topping off trucks with minimal tractor maneuvering
- In-field rest stand allows faster auger raising and lowering for quickly returning to the combine



Front-fold auger in field transport

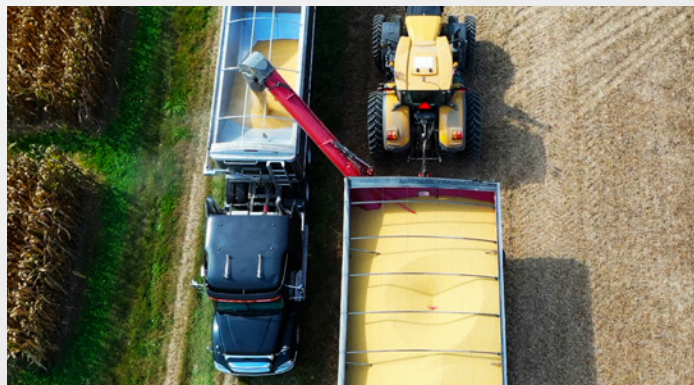




# X-TREME GRAIN CARTS

## Features/Benefits

- The auger connection features a patented flex-drive coupler for optimum u-joint life and continuous-flow upper and lower flighting for enhanced unloading speed and grain quality
- Dual, auger-mounted LED lighting enhances nighttime operation
- Full-length, computer-balanced extended-wear 7/16" thick flighting for longest life
- Easy-to-use, gravity-flow cleanout door is wheel-operated and can be locked open for easy cleanout
- The gearbox features oversized gears and bearings that are encased in a durable aluminum gearbox housing, are static-rated at 330 h.p. and dynamic rated at 153 h.p. for long-term, trouble-free use
- P.T.O. features a cut-out clutch for superior driveline protection and automatic reset
- Silicone-sealed seams, durable primer undercoat and oven-baked enamel topcoat in choice of tractor red or green to resist corrosion
- Weatherguard rollover tarp with heavy-duty 18-ounce canvas to protect load contents is standard on models 1519, 1319 and 1119 and optional on model 1019
- Vented end caps to ensure air can escape for easier tarp operation
- Standard transport safety features include LED tail and turn lights, reflective striping and transport chain
- Cast-iron hitch with transport chain for enhanced safety and heavy-duty jack for easy storage



Enhanced auger visibility from cab



Four-way downspout with inward/outward and side-to-side maneuverability



Continuous-flow flighting





# UNDERCARRIAGE OPTIONS



High-flotation wheel and tire options

## Wheels

Choose from the widest variety of options for making your cart match your operation's needs, depending on model.

- Single, high-flotation wheels and straddle-row duals
- Special-alloy, high-tensile strength spindles and hubs with gusset reinforcements for long life. 12-bolt hubs on model 1519 and 1319, 10-bolt on 1119 and 1019

## Tracks

All tracked undercarriages are factory aligned for optimum performance and feature one-piece molded rubber tracks with shallow lugs for long-term use and superior flotation. The single-point hydraulic tensioning system provides peace of mind from your first harvest and includes hydraulic hoses and pressure gauge for easily tensioning tracks. All hubs are greaseable with purgeable, triple-lip seals for longer life. The main idler and bogie wheels feature rounded edges for added belt life.

- Automatic greasing system applies lubricant more frequently to pivoting points for precise application and enhanced longevity – standard with Equalizer® tracks, optional for traditional tracks



Equalizer tracks



Auto greaser

## Equalizer® Tracks

- Extra-wide 42" belt provides added flotation and is available in 148" or 131" lengths depending on cart model
- The patented Equalizer track system cambers 9 degrees side-to-side in addition to 20-degree front-and-rear pivoting for the optimum ground contact over the roughest terrain for greater flotation and a smoother ride

## Traditional Tracks

- Feature front-rear pivoting for added flotation over ground contours
- Depending on model, choice of flotation level with 36" wide track with 40" end wheels or 32" end wheels

## Undercarriage P.S.I. Specifications\*

	1519	1319	1119	1019
42" x 148" Equalizer Tracks	12.66	11.22		
42" x 131" Equalizer Tracks		13.24	10.88	
36" x 148" Tracks	14.47	12.79	10.51	
36" x 131" Tracks			12.40	11.60
36" x 112" Tracks			13.84	12.92
480/80x46 Duals (158A8 LI)				18.92
520/85x42 Duals (157A8 LI)				15.59
IF1250/50x32 (201A8 LI)		16.93	13.64	
1250/50x32 (188A8 LI)			15.85	13.72
IF1250/50x32 (188A8 LI)			13.53	12.67
LSW 1100/45x46 R-1 (195D)			14.65	
1050/50x32 (178A8 LI)			19.85	18.27
900/70x32 (188A8 LI)			22.28	
900/65x32 (191A8 LI)			22.59	20.90
900/60x32 (181A8 LI)				24.37

\*Represents the relative ground pressure calculated at 3" soil penetration as a comparison between undercarriages

# WEIGHING SYSTEMS

## UHARVEST® PRO GRAIN CART SCALE AND DATA SYSTEM

The UHarvest® Pro ISOBUS-connected, full-featured harvest data collection system easily tracks grower, farm, field, crop, truck, destination and variety for each load. With plug-and-play ISOBUS technology, the user can operate the system from the tractor's VT display, eliminating the need for extra monitors in the cab. Once plugged into the tractor's ISOBUS connection, the user can easily enter data on the VT display and be ready to harvest. Harvest data is automatically recorded from each load so the operator can focus on quickly unloading and returning to the combine.

- The harvest data can be quickly uploaded to a Raven Slingshot account for analysis or shared with your crop advisor or insurance adjuster by using a mobile device with Bluetooth connection and the free mobile app
- Optional moisture-sense technology converts wet bushels to dry bushels
- Accu-load technology automatically unloads a predetermined weight based on truck being loaded



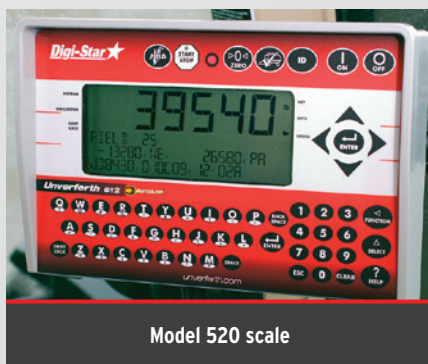
Virtual terminal



## STAND-ALONE SCALE OPTIONS



Model 410 scale



Model 520 scale



Cart-mounted LED display

- The model 410 scale package is specifically designed for ease of use and maximum productivity. The data can be sent to an optional attached printer or DataDownloader (DDL).
- The model 520 scale package's large, 26-character display provides automatic load logging and detailed management options such as downloading field information from your computer to the scale for easily recording field data; includes USB drive and software.
- An optional cart-mounted 4" x 18" LED remote display is available to show current cart volume with these indicators and UHarvest Pro system.





# ACCESSORIES

## X-TREME GRAIN CARTS

- Electric-operated rollover tarp operation provides easy opening/closing from the convenience of the tractor cab
- Tongue-mounted hydraulic drive for operating with tractors without P.T.O. with option of 100 gpm flow for up to 325 bushels per minute unloading or 50 gpm flow with up to 250 bushels per minute unloading, depending on cart model
- Pistol-grip 4-function remote for more convenient control of the auger functions. Features electric-over-hydraulic operation of auger fold, flow door, downspout in and out and side-to-side movement
- Color camera with 7" viewing screen to monitor cart surroundings, or unloading
- Water delivery system features a custom-molded tank 275-gallon with 100' of hose and powerful hydraulic pump for models 1519 and 1319



Hydraulic drive motor



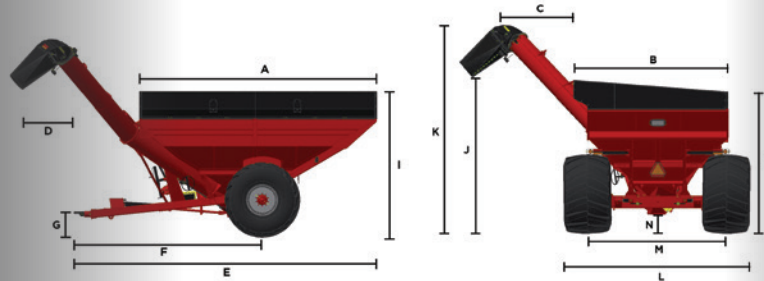
Mounted camera monitor



4-function remote auger control



# SPECIFICATIONS



## Unverferth X-TREME® Grain Carts

Model Number	1519	1319	1119	1019
Capacity (bushels)*	1550	1330	1100	1000
Engine HP	300	250	225	200
Loaded Tongue Weight (lbs.)	6,500	6,295	6,000	5,730
Empty Tongue Weight (lbs.)	3,600	3,525	3,300	3,150
Auger Diameter	21" into 20"	21" into 20"	21" into 20"	21" into 20"
Unload Speed (bushels/min.)	650	650	650	650
Flighting Thickness	7/16"	7/16"	7/16"	7/16"
Hub Size/Spindle Diameter	–	12-bolt/6"	10-bolt/4.5"	10-bolt/4.5"
Hydraulic Remotes Required	4	4	4	4
Front/Rear Slopes (degrees)	32/30	32/30	40/30	40/30
A.) Hopper Length	25' 4"	25' 4"	21'	21'
B.) Hopper Width	13' 8"	13' 8"	13'	11' 10"
C.) Auger Side Reach Max.	9' 9"	9' 9"	7' 10"	7' 10"
C.) Auger Side Reach Min.	8' 4"	8' 4"	6' 7"	6' 7"
D.) Hitch to Spout When Straight Down (forward reach)	1' 2"	1' 2"	1' 5"	1' 5"
E.) Overall Transport Length	31' 3"	31' 3"	26' 10"	26' 10"
F.) Hitch to Center of Axle	18' 6"	18' 6"	16' 8"	16' 8"

## Single Wheels and Tires

Measured Undercarriage	–	IF 1250/50x32 Tire	Adj. Axle 1050/50x32 Tire	Adj. Axle 900/60x32 Tire
Empty Weight (lbs.)	–	20,135	14,530	14,020
G.) Hitch Height	–	1' 8"	1' 8"	1' 8"
H.) Hopper Height Low Side	–	11'	11' 4"	11'
I.) Hopper Height High Side	–	12'	12' 4"	12'
J.) Auger Height With Spout Straight Down	–	12' 9"	12' 3"	12' 3"
K.) Height to Top of Auger in Unload Position	–	17' 6"	17'	17'
L.) Width Outside of Tires	–	15' 3"	16' 5"	16'
M.) Center of Tire to Center of Tire	–	11'	12' 3"	12' 3"
N.) Under Frame Height	–	1' 4"	1' 5"	1' 5"

## Tracks

Measured Undercarriage	42" x 148" Equalizer Track	42" x 148" Equalizer Track	42" x 131" Equalizer Track	36" x 112" Hydraulic-Tension Track
Empty Weight (lbs.)	30,800	30,300	23,220	19,490
G.) Hitch Height	1' 10"	1' 10"	1' 8"	1' 8"
H.) Hopper Height Low Side	11' 5"	11' 1"	11' 5"	11' 1"
I.) Hopper Height High Side	12' 5"	12' 1"	12' 5"	12' 1"
J.) Auger Height With Spout Straight Down	12' 9"	12' 9"	12' 5"	12' 5"
K.) Height to Top of Auger in Unload Position	17' 8"	17' 8"	17' 1"	17' 1"
L.) Width Outside of Tires	13' 11"	13' 11"	13' 2"	11' 10"
M.) Center of Tire to Center of Tire	10' 5"	10' 5"	9' 8"	9' 8"
N.) Under Frame Height	1' 3"	1' 3"	1' 5"	1' 5"

Due to continuing improvements in the design and manufacture of Unverferth products, all specifications contained herein are subject to change without notice.

For relevant patent marking, please visit [unverferth.com/patents](http://unverferth.com/patents).

TAKE YOUR HARVEST EFFICIENCY TO THE EXTREME!

visit [UMequip.com](http://UMequip.com) or see your nearest dealer today.



XTREME32518000M5

**Unverferth**  
Manufacturing Company, Inc.

UNVERFERTH MFG. CO., INC.

P.O. BOX 357, KALIDA, OH 45853, USA • [UNVERFERTH.COM](http://UNVERFERTH.COM) • 419.532.3121

© 2023 Unverferth Manufacturing Co., Inc.

®™ Trademarks, registered or applied for, of Unverferth Manufacturing Co., Inc., Kalida, OH  
Additional facilities in California, Georgia, Iowa, Nebraska, North Dakota, Washington, Texas and Ontario and Saskatchewan, Canada





# EXTREME REACH ENHANCED LINE OF SIGHT



**X-TREME**

**19-SERIES**

SINGLE-AUGER GRAIN CARTS

**FRONT-FOLDING  
GRAIN CARTS**

**INNOVATING  
THE FUTURE OF  
AGRICULTURE**

MODELS 1519, 1319, 1119 AND 1019  
[UMEQUIP.COM](http://UMEQUIP.COM)