

## **Seedbed Tillage**

Maximus®  
Tandem Disk  
Model 100

Part No. 72573

### Foreword



This symbol identifies important safety messages. When you see it, read the message that follows and be alert to the possibility of personal injury.

Remember, safety instructions stated in this manual are for your protection. Read them carefully and follow them closely when working around or using this machine.

Read and study this manual completely before attempting to operate this implement. Take this manual to the field for handy reference when operating, adjusting, or servicing your machine.

When referenced, “Right-Hand” (RH) and “Left-Hand” (LH) side of the machine are determined by standing behind the machine and facing in the direction of travel.

### Pre-Delivery Checklist

- Hardware tightened
- Machine lubricated
- Safety and operating procedures reviewed
- Field adjustment information reviewed
- Warranty information reviewed

## Product Information

When ordering parts or when requesting further information or assistance, always give the following information:

- Machine name
- Model number
- Serial number

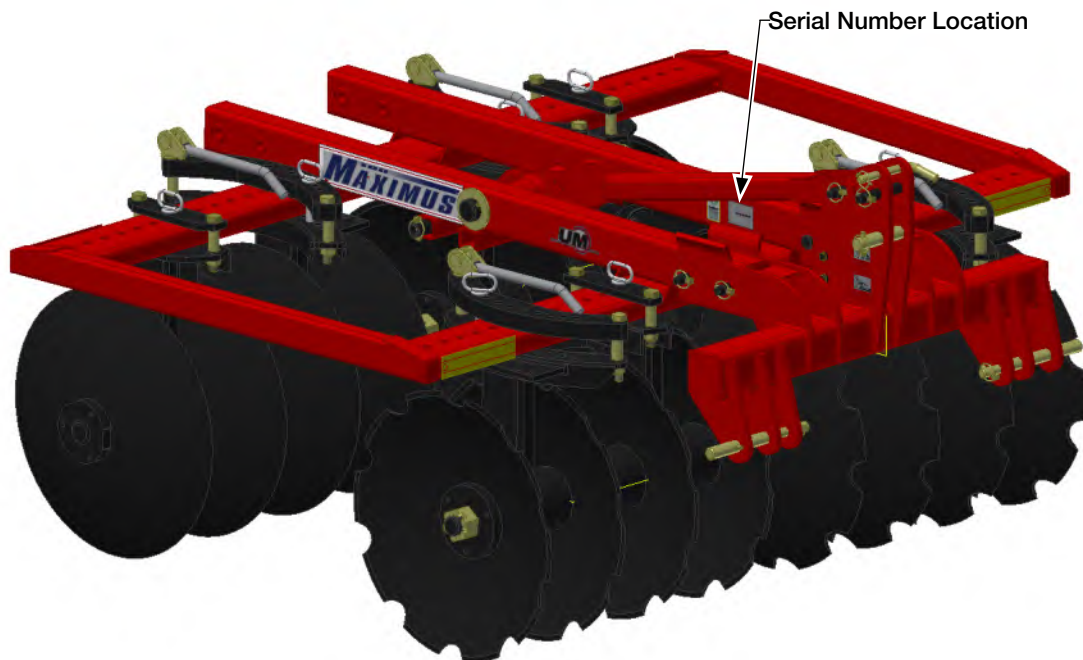
All products manufactured by Unverferth Mfg. Co., Inc. are warranted to be free from material and workmanship defects for one full year from time of consumer delivery. Your local dealer will gladly assist you with any warranty questions.

Please fill out and retain this portion for your records. The serial number plate is located on the frame as shown below.

Purchase Date \_\_\_\_\_ Model \_\_\_\_\_ Serial No. \_\_\_\_\_

Dealer \_\_\_\_\_ City \_\_\_\_\_

Dealer Contact \_\_\_\_\_ Phone \_\_\_\_\_



### IMPORTANT

- *The information, specifications, and illustrations in the manual are based on information available at the time it was written. Due to continuing improvements in the design and manufacture of Unverferth products, all specifications and information contained herein are subject to change without notice.*

## Table of Contents

Foreword .....	2
Pre-Delivery Checklist.....	2
Product Information.....	3

# Section I Safety

General Hazard Information.....	1-2
Safety Decals.....	1-3
Following Safety Instructions.....	1-4
Before Servicing or Operating.....	1-4
During Operation.....	1-5
During Transport .....	1-5
Preparing for Emergencies .....	1-6
Wearing Protective Equipment.....	1-6

**Table of Contents**

**Section II**  
**Set Up**

Set Up.....	2-2
Hitch and Mast Assembly .....	2-3
Accessories.....	2-4
-Blade Scrapers .....	2-4
-Side Shield .....	2-6
-Blade Extension Kit.....	2-7
-Shanks .....	2-8

FOR TORQUE INFORMATION, PLEASE REFER TO THE MAINTENANCE SECTION

**Table of Contents**

**Section III**  
**Operation**

Preparing Tractor.....	3-2
Preparing Maximus .....	3-2
Hardware .....	3-2
Pivot Pins .....	3-2
Bearings & Disk Blades .....	3-2
Lubrication.....	3-2
Attaching Maximus to Tractor .....	3-3
Leveling .....	3-3
Transporting.....	3-4
Unhitching.....	3-4
Maximus Blades.....	3-4
Disk Gang Settings.....	3-4
Gang Angle Adjustment .....	3-6
Gang Lateral Adjustment .....	3-6
Working Depth .....	3-6
Ground Speed .....	3-6
Operating Maximus.....	3-7
Reversible Hitch .....	3-7
Blade Extensions.....	3-8

**Table of Contents**

**Section IV**  
**Maintenance**

Daily Service .....	4-2
Annual Service .....	4-3
Lubrication .....	4-3
Blade Replacement .....	4-4
Front Blade.....	4-4
Rear Blade .....	4-4
Bearing Replacement.....	4-4
Troubleshooting .....	4-5
Complete Torque Chart .....	4-6

**Table of Contents**

**Section V**  
**Parts**

Safety Decals .....	5-3
Disk Frame, Hitch and Mast .....	5-3
Disk Gang Components .....	5-4
Accessories .....	5-6
Blade Scraper Kits .....	5-6
Blade Extension Kits .....	5-7
Center Shack\ .....	5-8
Side Shield .....	5-10
Hitch Extender .....	5-11
Blade Cover Bundle .....	5-12
Bearing Shield Kit .....	5-13
Rolling Harrow Attachment - 6' .....	5-14
Rolling Harrow Attachment - 7' .....	5-16
Rolling Harrow Attachment - 8' .....	5-18
Rolling Harrow Attachment - 9' .....	5-20
Rolling Harrow Attachment - 10' .....	5-22



# Section I

# Safety

General Hazard Information.....	1-2
Safety Decals.....	1-3
Following Safety Instructions.....	1-4
Before Servicing or Operating.....	1-4
During Operation.....	1-5
During Transport .....	1-5
Preparing for Emergencies .....	1-6
Wearing Protective Equipment.....	1-6

## General Hazard Information

No accident-prevention program can be successful without the wholehearted cooperation of the person who is directly responsible for the operation of the equipment.

A large number of accidents can be prevented only by the operator anticipating the result before the accident is caused and doing something about it. No power-driven equipment, whether it be transportation or processing, whether it be on the highway, in the field, or in the industrial plant, can be safer than the person who is at the controls. If accidents are to be prevented--and they can be prevented--it will be done by the operators who accept the full measure of their responsibility.

It is true that the designer, the manufacturer, and the safety engineer can help; and they will help, but their combined efforts can be wiped out by a single careless act of the operator.

It is said that, "the best kind of a safety device is a careful operator." We, at Unverferth Mfg. Co., Inc. ask that you be that kind of operator.



**REMEMBER:**  
**THINK SAFETY**  
A CAREFUL OPERATOR IS THE  
BEST INSURANCE AGAINST AN  
ACCIDENT!

### SIGNAL WORDS



INDICATES AN EXTREMELY HAZARDOUS SITUATION OR ACTION THAT WILL RESULT IN SERIOUS INJURY OR DEATH.



INDICATES A HAZARDOUS SITUATION OR ACTION THAT COULD RESULT IN SERIOUS INJURY OR DEATH.

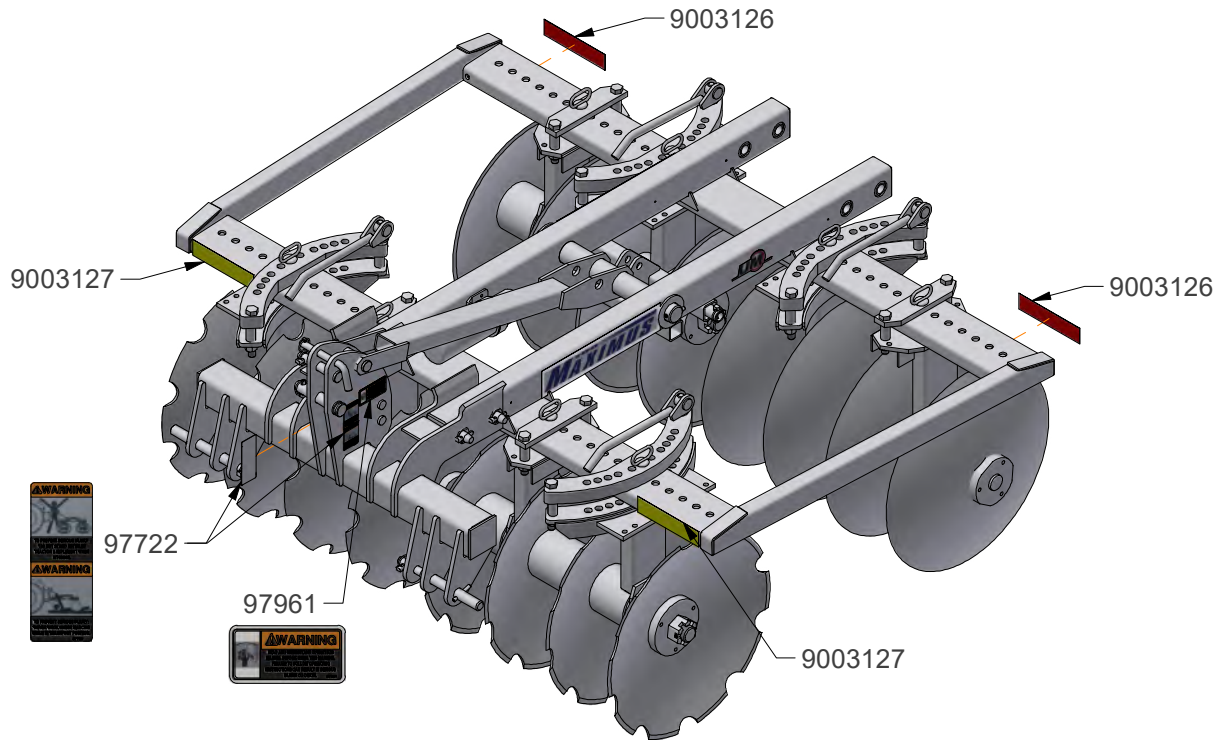


INDICATES AN UNSAFE SITUATION OR ACTION THAT MAY RESULT IN PERSONAL INJURY.



*Is used for instruction on operating, adjusting, or servicing a machine.*

**Safety Decals**



### Following Safety Instructions

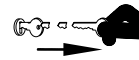
- Read and understand this operator's manual before operating.



- All machinery should be operated only by trained and authorized personnel.

- To prevent machine damage, use only attachments and service parts approved by the manufacturer.

- Always shut tractor engine off and remove key before servicing.



- Do not allow anyone to ride on the implement. Make sure everyone is clear before operating machine or towing vehicle.



- Never attempt to operate implement unless you are in the driver's seat.



### Before Servicing or Operating

- Avoid working under an implement; however, if it becomes absolutely unavoidable, make sure the implement is safely blocked.



- Ensure that all applicable safety decals are installed and legible.

- When working around the implement, be careful not to be cut by sharp edges.

- Add sufficient ballast to tractor to maintain steering and braking control at all times. Do not exceed tractor's lift capacity or ballast capacity.

- Do not stand between towing vehicle and implement during hitching.

- Inspect fields for buried utility lines (electric, natural gas, water, etc.). To find buried lines in the US or Canada contact 1-888-258-0808, in the US you may also contact 811.

### During Operation

- Regulate speed to working conditions. Maintain complete control at all times.
- Never service or lubricate equipment when in operation.
- Use extreme care when operating close to ditches, fences, or on hill-sides.
- Do not leave towing vehicle unattended with engine running.

### During Transport

- Comply with all laws governing highway safety when moving machinery.
- Use transport lights as required by all laws to adequately warn operators of other vehicles.
- Regulate speed to road conditions and maintain complete control.
- Maximum transport speed of this implement should never exceed 20 mph as indicated on the machine. Maximum transport speed of any combination of implements must not exceed the lowest specified speed of the implements in combination. Do not exceed 10 mph during off-highway travel.
- Slow down before making sharp turns to avoid tipping. Drive slowly over rough ground and side slopes.

## Preparing for Emergencies

- Keep a first aid kit and properly rated fire extinguisher nearby.



- Keep emergency numbers for fire, rescue, and poison control personnel near the phone.



## Wearing Protective Equipment

- Wear clothing and personal protective equipment appropriate for the job.



- Wear steel-toed shoes when operating.



- Wear hearing protection when exposed to loud noises.



- Do not wear additional hearing impairing devices such as radio headphones, etc.



# Section II

# Set Up

Set Up.....	2-2
Hitch and Mast Assembly .....	2-3
Accessories.....	2-4
-Blade Scrapers .....	2-4
-Side Shield .....	2-6
-Blade Extension Kit.....	2-7
-Shanks .....	2-8

FOR TORQUE INFORMATION, PLEASE REFER TO THE MAINTENANCE SECTION

## Set Up

### **WARNING**

- READ AND UNDERSTAND SAFETY RULES BEFORE OPERATING OR SERVICING THIS MACHINE. REVIEW THE SAFETY SECTION IN THIS MANUAL IF NECESSARY.

---

- TIPPING OR MOVEMENT OF THE MACHINE CAN CAUSE SERIOUS INJURY OR DEATH. BE SURE THE MACHINE IS SECURELY BLOCKED.

---

- KEEP HANDS CLEAR OF PINCH POINT AREAS.

---

- FALLING OBJECTS CAN CAUSE SERIOUS INJURY OR DEATH. DO NOT WORK UNDER THE MACHINE AT ANY TIME WHILE BEING HOISTED. BE SURE ALL LIFTING DEVICES AND SUPPORTS ARE RATED FOR THE LOADS BEING HOISTED. THESE ASSEMBLY INSTRUCTIONS WILL REQUIRE SAFE LIFTING DEVICES UP TO 1,500 LBS. SPECIFIC LOAD RATINGS FOR INDIVIDUAL LOADS WILL BE GIVEN AT THE APPROPRIATE TIME IN THE INSTRUCTIONS.

---

- EYE PROTECTION AND OTHER APPROPRIATE PERSONAL PROTECTIVE EQUIPMENT MUST BE WORN WHILE SERVICING THE IMPLEMENT.

---

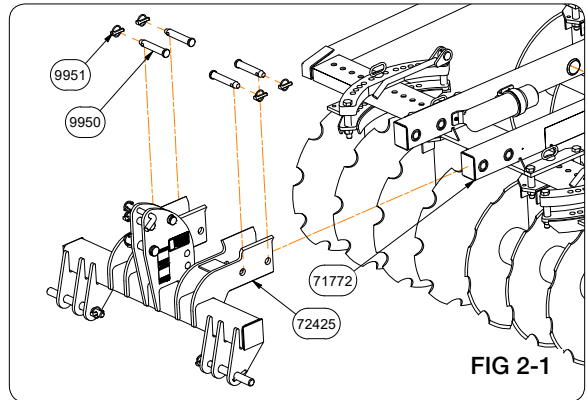
### **CAUTION**

- SHARP EDGES ON THE MACHINE CAN CAUSE INJURY. BE CAREFUL WHEN WORKING AROUND THE MACHINE.

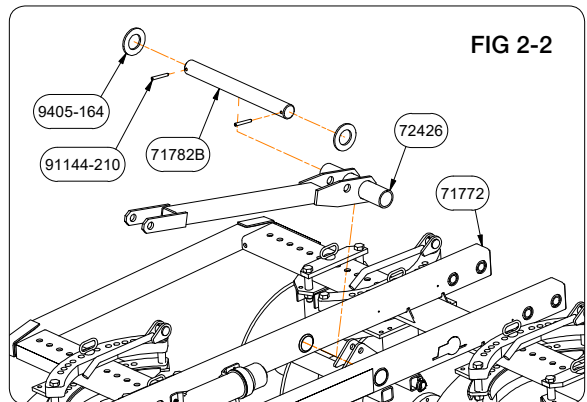


## Hitch and Mast Assembly

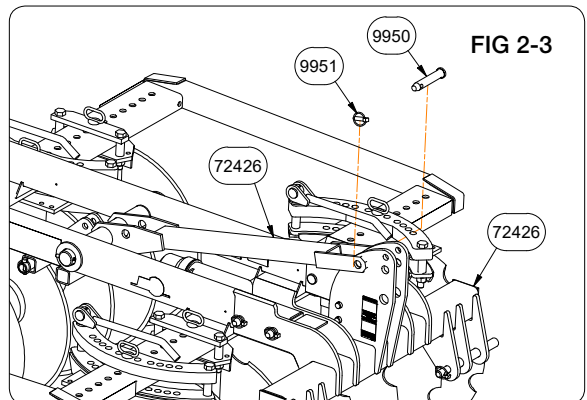
1. Remove banding and blocking material from disk. Using a safe lifting device rated at a minimum of 1500 lbs., lift disk sub-assembly from pallet. Remove roll pins and center shaft (71782B) from disk frame. Mount 3-PT Hitch Weldment (72425) to Disk Frame Weldment (71772) and secure with Clevis Pins 1"Dx5-7/16" (9950) and Lynch Pins 7/16"Dx1-3/4" (9951). FIG 2-1



2. Attach the Mast Link Weldment (72426) to Disk Frame Weldment (71772) and secure with Pins 2"Dx20" (71782B) Flat Washers 2.125"IDx3.75"ODx.25" (9405-164) and Spiral Pins 3/8"Dx2-3/4" (91144-210). FIG 2-2



3. Secure Mast Link Weldment (72426) to Disk Frame Weldment (71772) with Clevis Pin 1"Dx5-7/16" (9950) and Lynch Pin 7/16"Dx1-3/4" (9951). FIG 2-3



**Accessories**

**Blade Scrapers**

**CAUTION**

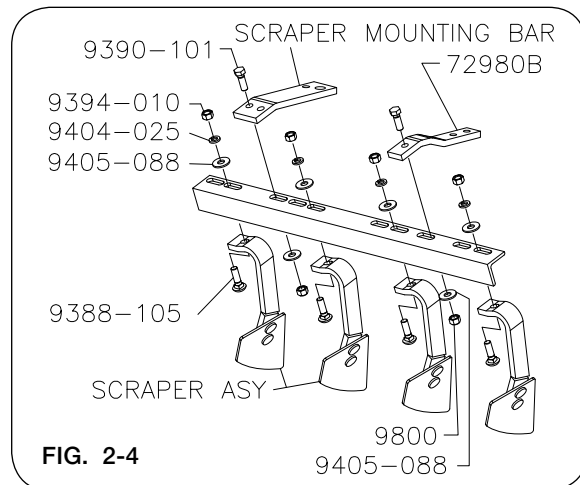
- SHARP EDGES ON THE MACHINE CAN CAUSE INJURY. BE CAREFUL WHEN WORKING AROUND THE MACHINE.

Unpack blade scrapers, separate, and identify all components according to page 5-6 of the PARTS section.

Determine if scrapers are to be installed for "normal" or "reverse" disking.

**NORMAL DISKING:**

1. Place bracket (72980B) under the plate on the outside bearing and secure with 1/2-13x1-1/2 capscrews (9390-101) and locknuts (9800).
2. Remove the locknut (9802) from the 3/4-10 x 4-1/2 capscrew (9390-154) on the inner bearing. Mount scraper bar (72981B) to the inner bearing and secure with the previously removed 3/4-10 locknut (9802) and 1/2-13x1-1/2 capscrew (9390-101), flat washer (9405-088), and locknut (9800). If blade cover kits are installed, replace capscrew 3/4-10x4-1/2 (9390-154) with capscrew 3/4-10x5-1/2 (9390-156) located in the scraper kit.



3. Mount angle (72977B or 72978B) with the solid leg pointing downward for the underside of the scraper bars (72981B & 72980B). Secure with 1/2-13x1-1/2 capscrews (9390-101), flat washers (9405-088), and locknuts (9800).
4. Mount scrapers (806140B) to angle (72977B or 72978B). Secure with 1/2-13UNCx1-3/4 carriage bolts (9388-105), flat washers (9405-088), lock washer (9404-025) and hex nut (9394-010).
5. For the rear gangs, remove the locknut (9802) from the 3/4-10x4-1/2 capscrew (9390-154) on the inner bearing. Mount scraper bar (72979B) to the inner bearing and secure with the previously removed 3/4-10 locknut (9802) and 1/2-13x1-1/2 capscrew (9390-101), flat washer (9405-088), and locknut (9800).
6. Place bracket (72980B) under plate on inside bearing and secure with 1/2-13x1-1/2 capscrews (9390-101) and locknuts (9800).
7. Mount angle (72977B or 72978B) with the solid leg pointing downward of the underside of the scraper bars (72980B and 72979B). Secure with 1/2-13x1-1/2 capscrews (9390-101), flat washers (9405-088) and locknuts (9800).

**Accessories**

**Blade Scrapers**

8. Mount scrapers (806140B) to angle (72977B or 72978B). Secure with 1/2-13UNCx1-3/4 carriage bolts (9388-105), flat washers (9405-088), lock washer (9404-025) and hex nut (9394-010).
  
9. Tighten all hardware and torque to specifications. See "Complete Torque Chart" in the "Maintenance" section. In most cases, the scraper should NOT directly contact the disk blade. Adjust the scraper to allow 1/16" to 1/8" clearance to the blade. Rotate the gang to verify clearance all the way around. As the scraper wears, it will be necessary to re-adjust. In extremely wet or sticky soils, it may be necessary to have the scraper contact the blade. Adjust the scraper to maintain a light pressure on the blade. DO NOT permit the scraper to cut a groove in the blade or get caught in the notches of the blade. Be sure the scraper does not interfere with the normal rotation of the blade. DO NOT adjust scraper to contact blade unless absolutely necessary as it will result in shorter scraper life.

**REVERSE DISKING:**

The REVERSE DISKING assembly is similar to that for "NORMAL DISKING" except the mounting bars will mount on the normal front-side of the disk gangs (Fig. 2-4 & 2-6).

10. When reverse disking, the scrapers must be installed to the front-side of the gangs for proper function. Reverse disking with the scrapers installed for "NORMAL DISKING" may result in poor performance and machine damage.

Optional blade covers (71805B, 72931B, 72939B) may be installed in combination with the blade scrapers. In this case, scrapers should be installed first, followed by the blade covers. Blade covers will then mount to the underside of the scraper brackets.

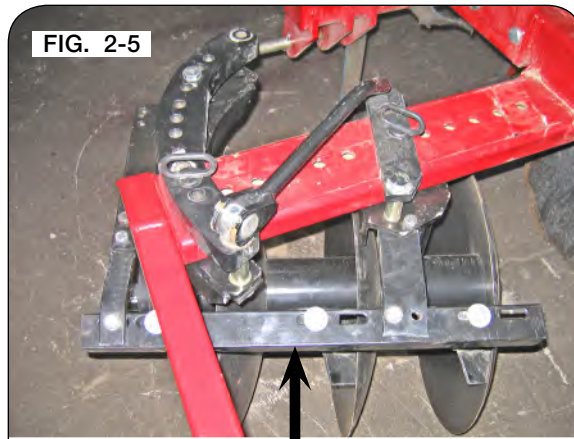
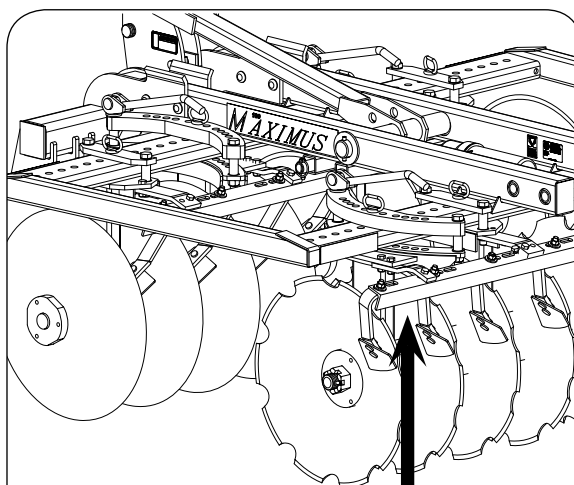


FIG. 2-5

NORMAL DISKING SCRAPERS SHOULD BE INSTALLED ON THE BACK-SIDE OF GANGS



REVERSE DISKING SCRAPERS SHOULD BE INSTALLED ON THE FRONT-SIDE OF GANGS

FIG. 2-6

## Accessories

### Side Shield

Side shields (71809B) can be used to prevent vines and branches from becoming entangled in the disk. The shields may be adjusted for height and width and fore/aft position on the disk. Adjust the shields by loosening and removing the 1/2" mounting hardware and setting the shields to the desired location. Re-tighten all hardware. Height is controlled by flipping the bent leg on the 71808B mounting bar either up or down.

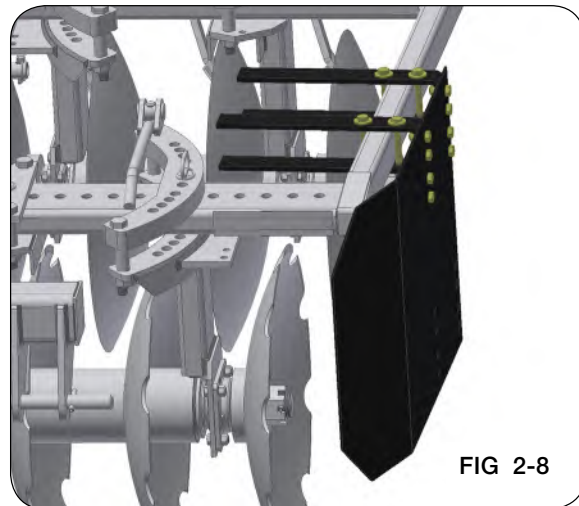
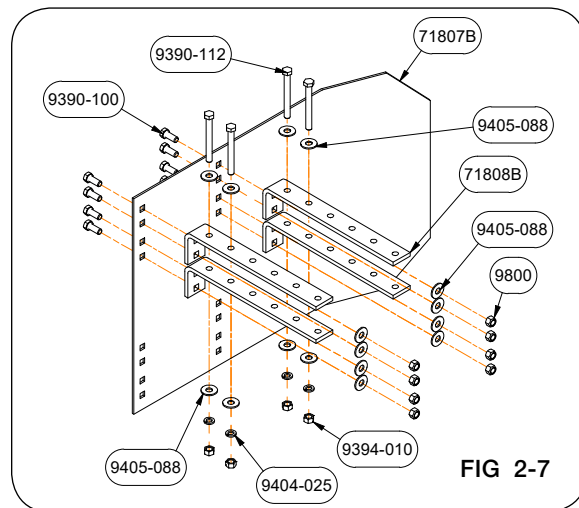
Do not permit material to jam between the disk blades and the side shields. The side shields are designed to deflect material, not to push or force it out of the way. Avoid pushing or forcing material with the side shields to prevent damaging them. Maintain 4"-6" clearance between the disk blade and the side shield at the closest point.

Unpack side shield bundle, separate, and identify all components according to page 5-10 of the PARTS section.

Side shields may be mounted in the LOW or HIGH position, depending on the orientation of the mounting bar (71808B). If you are uncertain which position is needed, try the LOW position first.

1. Attach the mounting bars (71808B) to the shields (71807B) with the leg on mounting bar pointing down (LOW position) or up (HIGH position). Secure with 1/2-13 x 1-1/4 capscrews (9390-100) and locknuts (9800).
2. Slide mounting bars over the outside frame tube on disk. The bent leg of the side shield should face the front and point-in toward the front disk gang. For initial set-up, place the front of the side shield in-line with the front edge of the front 2x6 frame tube on the disk.
3. Adjust the shield to have 4-6" lateral clearance to the disk gang at the closest point. Secure with 1/2-13 x 4 1/2 capscrews (9390-112), lock washers (9404-025, flat washers (9405-088), and hex nut (9394-010), (Fig. 3-10).

Additional adjustments may be necessary once the disk is operating in the field.



**Accessories**

**Blade Extension Kit**

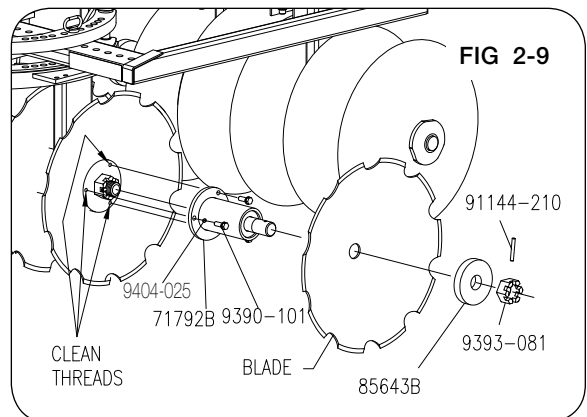
**CAUTION**

- SHARP EDGES ON THE MACHINE CAN CAUSE INJURY. BE CAREFUL WHEN WORKING AROUND THE MACHINE.

1. Park the unit on a firm, level surface. Lower the disk until it is fully resting onto a minimum of two supports rated for 1500 lbs each. Set the vehicle parking brake, shut off the engine and remove the ignition key.
2. Unpack blade extensions, separate, and identify all components according to page 5-7 of the PARTS section.
3. Using a 1/2-13 tap, clean the threads (3 each) in each end washer of the disk gangs.

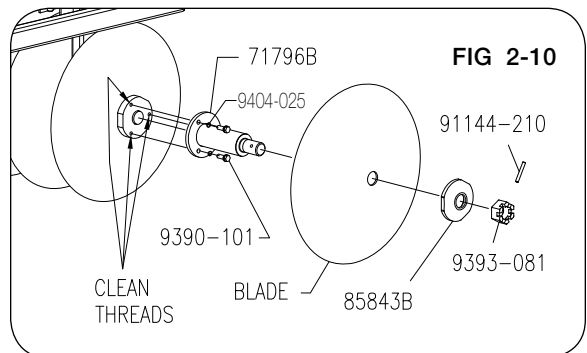
**FRONT DISK GANG:**

4. Install blade axle 4" Dia. weldment (71792B) on a front disk gang with the 1/2-13 x 1-1/2 capscrew (9390-101) and lock washer (9404-025). Tighten hardware.
5. Install blade and convexed spacer (85643B) onto blade axle weldment. Secure with slotted nut (9393-081) and torque to 300 ft-lbs. Align notches in nut with hole in shaft and install spiral pin (91144-210).
6. Repeat preceding two steps for other front gang.



**REAR DISK GANG:**

7. Install blade axle 3" Dia. weldment (71796B) on a rear disk gang with 1/2-13 x 1-1/2 capscrews (9390-101) and lock washer (9404-025). Tighten hardware.
8. Install blade and concaved collar (85843B) onto blade axle weldment. Secure with slotted nut (9393-081) and torque to 300 ft-lbs. Align notches in nut with hole in shaft and install spiral pin (91144-210).



9. Repeat preceding two steps for other rear gang.

## Accessories

### Center Shank

Two styles of furrowing shear-bolt shanks are available to till between the disk gangs. Bundle 72932B comes with a 2" wide chisel point, mounted at a 50° stem angle. Bundles 72933B, 72934B and 72935B come with 6", 8" or 10" furrowing shovels respectively, mounted at a 47° stem angle.

1. Unpack blade extensions, separate, and identify all components according to page 33 of the PARTS section.
2. Install ground tool onto shank and attach with hardware provided.
3. Make certain stem angle of shank and ground tool match, (either 47° or 55°).
4. The furrowing shank may be mounted in either the hitch frame or the main frame. Select a location, determine the working depth and pin the shank in place.

All shear-bolt shanks use a 3/8-16UNC x 2 1/2 SAE grade 5 shear-bolt (9390-061).

**NOTE:** Do not use a different size or grade shear-bolt or machine damage may result.

If a bolt shears, raise and block under disk. Drive-out any pieces of bolt in the shank. Examine shank for other damage and repair parts as needed. Install a new shear-bolt and torque to 34-38 ft.-lbs. If the shear-bolt hole in the shank or shank holder becomes deformed or enlarged, this may cause inconsistent shearing or machine damage. Replace these components when wear is excessive.

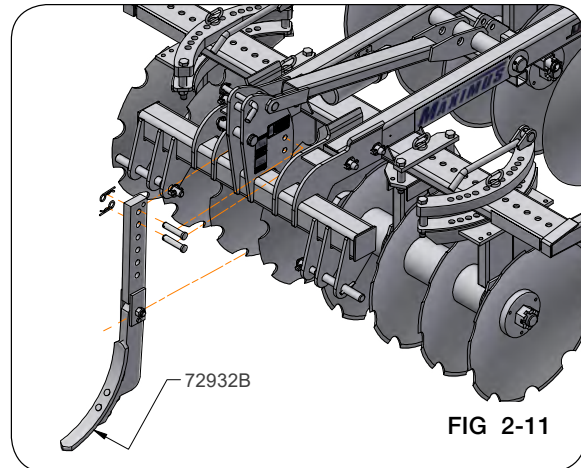


FIG 2-11

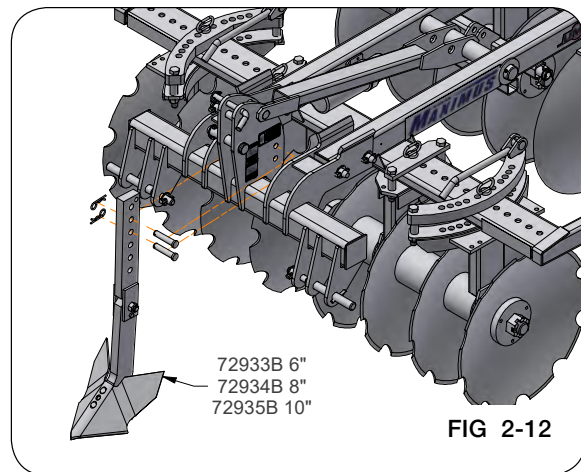


FIG 2-12

## Section III

# Operation

Preparing Tractor.....	3-2
Preparing Maximus .....	3-2
Hardware .....	3-2
Pivot Pins .....	3-2
Bearings & Disk Blades .....	3-2
Lubrication.....	3-2
Attaching Maximus to Tractor .....	3-3
Leveling .....	3-3
Transporting.....	3-4
Unhitching.....	3-4
Maximus Blades.....	3-4
Disk Gang Settings.....	3-4
Gang Angle Adjustment .....	3-6
Gang Lateral Adjustment .....	3-6
Working Depth .....	3-6
Ground Speed .....	3-6
Operating Maximus.....	3-7
Reversible Hitch .....	3-7
Blade Extensions.....	3-8

## Preparing Tractor

### **WARNING**

- READ AND UNDERSTAND SAFETY RULES BEFORE OPERATING OR SERVICING THIS MACHINE. REVIEW “SAFETY” SECTION IN THIS MANUAL IF NECESSARY.

---

- TRANSPORTING THE IMPLEMENT SIGNIFICANTLY CHANGES THE WEIGHT AND BALANCE OF YOUR TRACTOR. MAKE SURE THE TRACTOR IS PROPERLY BALLASTED.

---

### **CAUTION**

- SHARP EDGES ON THE MACHINE CAN CAUSE INJURY. BE CAREFUL WHEN WORKING AROUND THE MACHINE.

---

Before operating implement, refer to tractor operator’s manual for information concerning safe methods of operation, and tire inflation, wheel adjustments, and tractor weights.

Check tractor brakes and transport lights. Make sure they are in proper working order.

Make sure the tractor drawbar will not interfere with the MAXIMUS disk. Slide the drawbar forward or remove it from the tractor, as required.

Before hitching to the MAXIMUS disk, be certain your tractor is properly ballasted to lift the implement and all its attachments. See your tractor operator's manual and consult your dealer for more information. Do not exceed lift or ballast capacity of tractor.

## Preparing Maximus

Perform the service checks as outlined. Repair or replace any damaged or worn parts before operating.

### **Hardware**

Check for loose bolts and nuts, and tighten as needed. Check again after the first half-day of operation.

### **Pivot Pins**

Check that all pins are in place and in good condition. Replace any worn, damaged or missing pins.

### **Bearings & Disk Blades**

Check each Disk blade to make sure bearings are tight. Grab the outside of the blade and push/pull on the blade. If you can feel the blade move as you push/pull on it you will need to tighten the spindle nut on the hub. Remove the hub cap strap, hub cap and cotter pin. Tighten the nut one notch and check the blade for movement. If the blade is tight replace the cotter pin, hub cap, and strap. Repeat process on all Disk blades.

### **Lubrication**

Lubricate unit as outlined in MAINTENANCE section.



## Attaching Maximus To Tractor

### **WARNING**

- **CRUSHING CAN CAUSE SERIOUS INJURY OR DEATH. DO NOT STAND BETWEEN THE TOWING VEHICLE AND IMPLEMENT WHEN HITCHING. ALWAYS ENGAGE THE PARKING BRAKE AND STOP THE ENGINE BEFORE INSERTING THE HITCH PINS OR SECURING LATCHES.**

The MAXIMUS disk is designed to mount directly to the Category I, Category II, or Category IIIN 3-point hitch of an agricultural tractor. An ASAE approved Category I, Category II, or Category IIIN quick-hitch may be used with this implement.

When using a Category IIIN 3-point hitch or Category IIIN quick-hitch, an adapter bushing (72761) will be required. See your dealer for assistance.

Back the tractor to the disk and align the lower lift arms with the appropriate lugs in the disk hitch. The lift arms should fit between the inner two lug plates for a Category I hitch and the outer two lug plates for a Category II or Category IIIN hitch. Be certain to use the lower lift lugs that are suited to your tractor. See your tractor operator's manual or consult your dealer to determine which hitch is used on your tractor. Insert the lower lift pins through the disk and tractor hitch and secure with the lynch pin.

The upper hole in the disk hitch mast should be used with a Category I three point hitch. Adjust the top link to the proper length to keep the disk frame level when operating. Insert the linkage pin through the mast and tractor top link and secure with the lynch pin.

When using a quick hitch, lower the quick hitch to slide under the disk hitch. If you are using a Category I quick hitch, use the appropriate bushings with the quick hitch. See your tractor operator's manual or dealer for more information. Align the quick hitch with the appropriate lower lugs and the lowest pin in the mast. Raise the quick hitch and latch the lower lift pins in place.

## Leveling

When leveling your MAXIMUS DISK, position the tractor with the implement on a level surface. Check the tractor tire pressure and inflate equally from side-to-side. See your tractor operator's manual for correct tire inflation pressure.

With the MAXIMUS DISK attached to the tractor, raise the implement a couple of inches off the floor. Shut-off the engine and lock the brakes on the tractor. Level the implement frame from side-to-side by adjusting the lift links on the tractor 3-point hitch.

For initial adjustment, with the MAXIMUS DISK still raised off the ground a couple of inches, stand at the side of the implement and sight across the top of the implement frame and floor.

If the MAXIMUS DISK frame is not level from front to back with the ground line, turn the center link on the tractor either in or out until the implement frame is parallel to the ground line.

Further front-to-back adjustment may be required once the machine is operated in the field. When properly leveled, all disk blades will enter the ground to a uniform depth.

### Transporting

Comply with all state and local governing highway safety and regulations when moving machinery on public roads.

Be sure all reflectors and SMV Emblem are in place and clearly visible.

#### **WARNING**

- **USE TRANSPORT LIGHTS AS REQUIRED BY ALL LAWS TO ADEQUATELY WARN OPERATORS OF OTHER VEHICLES.**

---

- **ALWAYS TRAVEL AT A SPEED WHICH PERMITS COMPLETE CONTROL OF TRACTOR AND IMPLEMENT.**

---

Compliance with all lighting and marking laws is the responsibility of the operator at the time of travel.

See federal regulation 49 CFR 562; available at [www.govinfo.gov](http://www.govinfo.gov) for US federal law requirements.

See your Unverferth dealer for additional brackets, reflectors, or lights to meet your requirements.

### Unhitching

Lower the implement on a flat surface, clear of any debris or obstruction, and unhitch the unit.

### Maximus Blades

Worn blades will not penetrate, cut, or level as well as new ones. A new blade is approximately 24" in diameter. Replace the blades when the diameter reaches 22" or performance is no longer satisfactory.

Replace broken or cracked blades immediately.

Front blades will wear faster than rear blades. The outer blades on the front gangs will wear faster than the inner blades. Similarly, the inner blades on the rear gangs will wear faster than the outer blades. For best performance, keep all blades approximately the same diameter.

### Disk Gang Settings

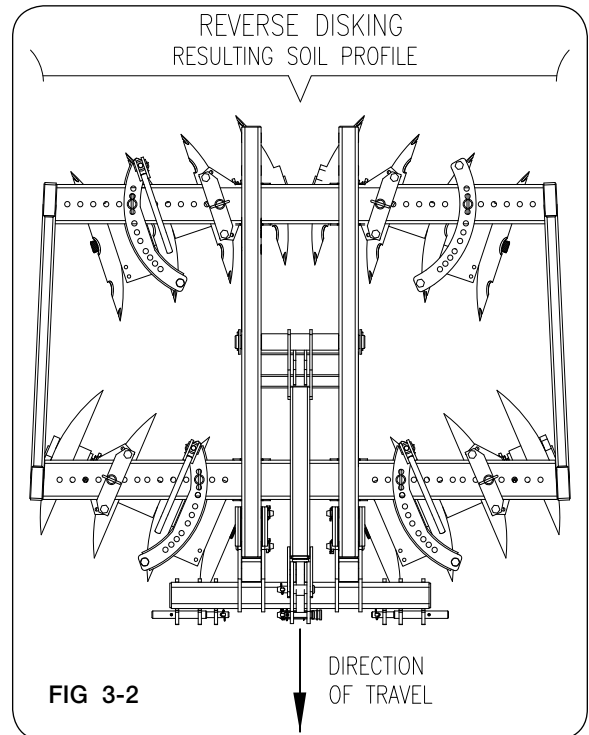
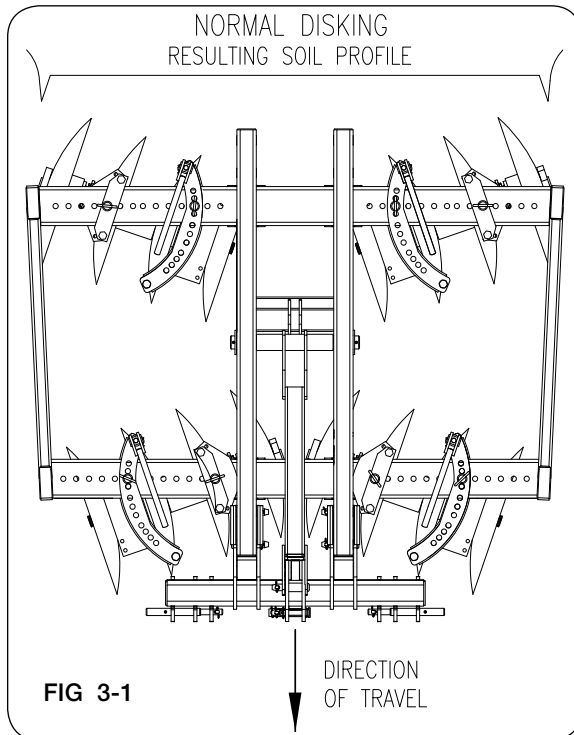
#### **CAUTION**

- **SHARP EDGES ON THE MACHINE CAN CAUSE INJURY. BE CAREFUL WHEN WORKING AROUND THE MACHINE.**

---

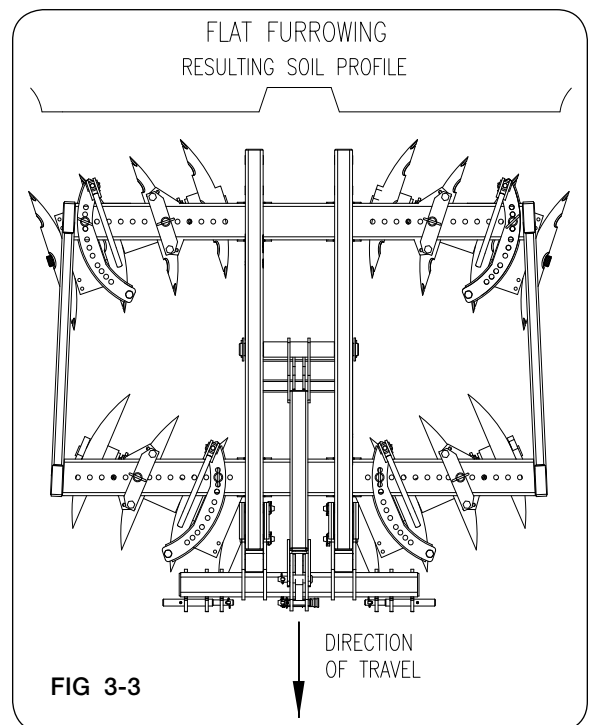
### Disk Gang Settings (continued)

The MAXIMUS disk gangs may be set at 0, 6, 14, 19, 24, or 29 degrees. The gangs may be rotated forward or rearward to achieve a variety of soil profiles. The gangs may also be moved laterally on the frame, resulting in working widths from 5'3" to 7'3" feet on 4-Blade units and 6'8" to 8'8" on 5-Blade units. These adjustments permit the disk to be used for normal diking, reverse diking, and flat furrowing (Fig. 3-1, Fig. 3-2, and Fig. 3-3).



Before adjusting the MAXIMUS disk gangs:

1. Park the unit on a firm, level surface.
2. Lower the disc onto a minimum of two supports rated for 1500 lbs. each.
3. Set the vehicle parking brake, shut off the engine and remove the ignition key.



## Disk Gang Settings (continued)

### Gang Angle Adjustment

Remove the pin from the radius plate on the gang. Flip the over-center cam handle to unlock the gang.

With the machine lifted slightly off the ground, spin the gang frame to the desired working angle and reinstall the pin. Flip over-center cam handle to lock the gang. Repeat on the other 3 gangs.

If adequate clamping can't be achieved, adjust the carriage bolt that passes through the trunnion on the over-center cam handle by unlatching the over-center cam handle and rotating counter clockwise until square head of the carriage bolt can be indexed 90 degrees in either direction. Indexing the bolt clockwise looking (from above) will increase the tension on the bolt and counter clockwise will decrease the tension.

When locking and unlocking the over-center cam handle an extension pipe is provided for added leverage. To retrieve the extension pipe from behind the center shank mount remove a lynch pin from the pipe and remove pipe. Use pipe as required then reinstall extension pipe in frame tube and reinsert lynch pin for storage.

### Gang Lateral Adjustment

Remove both pins from the gang frame. Slide the gang to the desired width and reinsert both pins. Repeat on the other 3 gangs.

### Working Depth

Working depth of the MAXIMUS DISK is controlled by the tractor's 3-point hitch. Down pressure should not be applied with the tractor 3-point hydraulic system. If the disk runs deeper than 2"-4" under its own weight, the tractor 3-point hitch hydraulic system should be set to limit the working depth.

### Ground Speed

High ground speeds require more power, leave an uneven finish, and could damage the implement. Low ground speeds will prevent the disk from breaking clods, leveling, and incorporating fertilizers and other chemicals. Select a moderate ground speed (usually 2-5 mph) that gives the best performance based on conditions and desired finish.

## Operating Maximus Disk

1. Select a gang angle and lower the implement to the ground. Select a groundspeed in the range of 2-5 mph and begin moving forward. It may be necessary to adjust the gang angle, working depth, ground speed, weight, and frame levelness from the initial setting to match ground conditions.
2. When coming to the end of a pass, always raise the disk before making a turn.

***IMPORTANT: DO NOT*** turn with the disk in the ground, severe damage to the implement or tractor may occur.

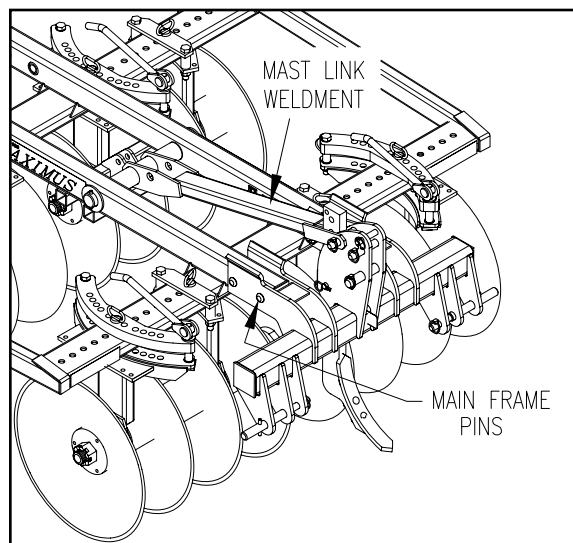
3. Use caution when operating on slopes or hillsides. The lifted weight of the disk may cause loss of control of the tractor. Add additional weight to the tractor, as required, according to the tractor operator's manual.

When disking plowed or sub-soiled ground, make the first pass in the same direction as the plow or sub-soiler to prevent damage to the disk. Subsequent passes, if required, may be made in any direction.

Some soil types disk work better if they are allowed to dry after the first pass is made. Do not disk when soil is wet or damp, a poor seedbed will result.

## Reversible Hitch

The hitch of the MAXIMUS disk may be installed on either end of the main frame. Using a safe lifting device rated at a minimum of 200 lbs, remove the pins from the main frame and mast link. Move the hitch to the other end of the frame. Flip the mast link over and reinstall all pins.



## Blade Extensions

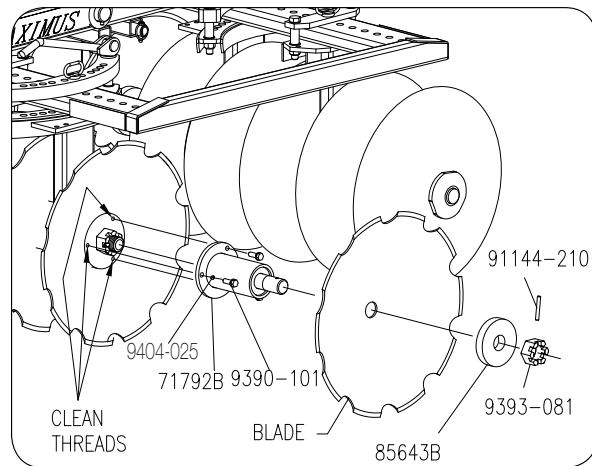
### CAUTION

- SHARP EDGES ON THE MACHINE CAN CAUSE INJURY. BE CAREFUL WHEN WORKING AROUND THE MACHINE.

1. Lower the disc onto a minimum of two supports rated for 1500 lbs. each, allowing the the disk gangs to rotate freely.
2. Unpack blade extensions, separate, and identify all components according to page 33 of the PARTS section.
3. Using a 1/2-13 tap, clean the threads (3 each) in each end washer of the disk gangs.

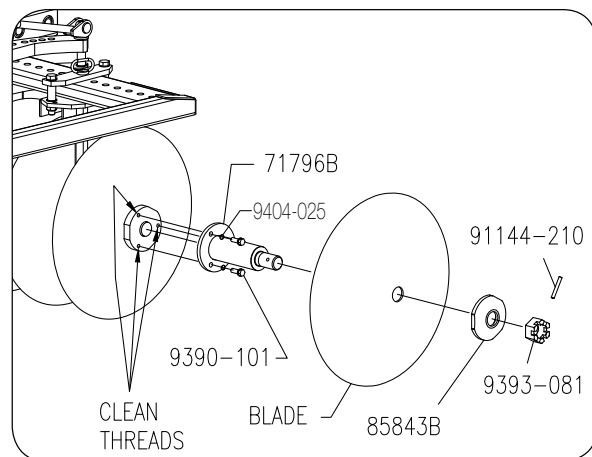
### Front Disk Gang

4. Install blade axle 4" Dia. weldment (71792B) on a front disk gang with the 1/2-13 x 1 1/2 capscrew (9390-101) and lock washer (9404-025). Tighten hardware.
5. Install blade and convex spacer (85643B) onto blade axle weldment. Secure with slotted nut (9393-081) and torque to 300 ft-lbs. Align notches in nut with hole in shaft and install spiral pin (91144-210).
6. Repeat preceding two steps for other front gang.



### Rear Disk Gang

7. Install blade axle 3" Dia. weldment (71796B) on a rear disk gang with 1/2-13 x 1 1/2 capscrews (9390-101) and lock washer (9404-025). Tighten hardware.
8. Install blade and concave collar (85843B) onto blade axle weldment. Secure with slotted nut (9393-081) and torque to 300 ft-lbs. Align notches in nut with hole in shaft and install spiral pin (91144-210).
9. Repeat preceding two steps for other rear gang.



## SECTION IV

# Maintenance

Daily Service .....	4-2
Annual Service .....	4-3
Lubrication .....	4-3
Blade Replacement .....	4-4
Front Blade.....	4-4
Rear Blade .....	4-4
Bearing Replacement.....	4-4
Troubleshooting .....	4-5
Complete Torque Chart .....	4-6

## Daily Service

### **WARNING**

- READ AND UNDERSTAND SAFETY RULES BEFORE OPERATING OR SERVICING THIS MACHINE. REVIEW "SAFETY" SECTION IN THIS MANUAL IF NECESSARY.
- ALWAYS BLOCK THE DISK FROM ROLLING OR FALLING BEFORE PERFORMING SERVICE. USE DEVICES RATED FOR WORK PERFORMED.

### **CAUTION**

- SHARP EDGES ON THE MACHINE CAN CAUSE INJURY. BE CAREFUL WHEN WORKING AROUND THE MACHINE.

**NOTE:** Before initial use, ensure all lubrication points have been greased.

Perform any daily lubrication outlined in "Lubrication" in this section.

Check all U-bolts and bolts for tightness. This is especially important during the first days of operation. See "Torque Chart" in this section.

Clean off dirt and residue which may have accumulated on implement during operation.

Check implement for damage which could have occurred during operation, and repair.

### **IMPORTANT**

- *Inspect mast pins for any wear or damage. Replace any worn or damaged pins.*
- *To assure level penetration of Disk blades, both tractor tires must be inflated to the same pressure.*



### Annual Service

Your implement is an important investment. Spend a little time to protect it from destructive rust and corrosion. You will be repaid in longer service life and better performance.

#### Beginning of Season

Check all bolts, U-bolts, and wheel bolts for tightness. Refer to “Torque Chart” in this section. Lubricate implement (see “Lubrication” in this section).

#### End of Season

Perform the following before placing the implement in storage:

1. Remove dirt and residue which could cause rusting.
2. Repaint any chipped or scraped areas.
3. Lubricate implement (see “Lubrication” in this section).
4. Coat all earth moving surfaces with grease or suitable rust preventatives.
5. Inspect for damaged parts. Replace before next season.
6. Store implement inside, away from livestock.
7. Use blocking to keep up off bare ground.
8. Replace all worn, torn or faded decals and reflectors.

If the disk is to be stored for an extended period, a light coating of grease, oil, or paint on the cutting surfaces of the blades will prevent rusting and prolong their life.

### Lubrication

Each gang bearing is equipped with a grease zerk. Lubricate bearings every 50 hours of use. Use 1-2 pumps of EP-2 or equivalent grease. Use only a manual grease gun to avoid seal damage.

## Blade Replacement

### Front Blades

To replace the Front blades, at least one of the front gang assemblies must be removed from the machine.

1. Park the unit on a firm, level surface. Lower the disk until it is fully resting onto a minimum of two supports rated for 1500 lbs each. Set the vehicle parking brake, shut off the engine and remove the ignition key.
2. Loosen the clamping handle and remove the hitch pins and 3/4" hardware from the clamping plates. Roll the gang from under the machine frame. Remove the roll pin and nut from the arbor bolt. Blades and spools can then be removed. Install new blades and torque to specification. The other front may be serviced without removing it from the machine, if desired. Reinstall the removed gang to the same point on the main frame.

*NOTE: When installing notched blades, the blades should be rotated so the notches are not in-line across the width of the gang. The notches should make a spiral pattern around the gang.*

### Rear Blades

To replace the blades on the rear gangs, the gangs do not have to be removed from the machine unless desired.

1. Park the unit on a firm, level surface. Lower the disk until it is fully resting onto a minimum of two supports rated for 1500 lbs each. Set the vehicle parking brake, shut off the engine and remove the ignition key.
2. Remove the roll pin and nut from the arbor bolt. Blades and spools can then be removed. Install new blades and torque to specification. If the gangs are removed, they must be reinstalled to the same point on the main frame.

## Bearing Replacement

Replace bearings when they become loose, damaged, or no longer rotate freely.

1. Park the unit on a firm, level surface. Lower the disc onto a minimum of two supports rated for 1500 lbs. each. Set the vehicle parking brake, shut off the engine and remove the ignition key.
2. Remove the disk gang with the damaged bearing per the blade replacement instructions.
3. Take note of the bearing positioning on the hanger for correct reassembly. Remove the 1/2" bolts and locknuts from the bearing and hanger and remove the bearing from from hanger.
4. Install new bearings into hanges, positioning the grease zerk so it is easily accessible. Secure with 1/2" bolts and locknuts and torque to specifications.
5. Reassemble and reinstall the disk gang on the machine to the original location.


**Troubleshooting**

<b>PROBABLE CAUSE</b>	<b>CORRECTION</b>
<b>IMPLEMENT DOES NOT LEVEL</b>	
Frame not level	See OPERATIONS section for leveling instructions
Ground too hard for hitch control setting	Adjust the tractor 3-point hitch control position. See OPERATIONS section "Load & Depth Control"
Worn or dull disk blades	Replace with new disk blades
Gang angle too high	Reduce angle on gangs
Ground speed too fast	Reduce ground speed
Implement working too deep	Reduce working depth
Leveling bar improperly adjusted	See FIELD ADJUSTMENTS for proper setting of leveling bar
Soil conditioning basket spring tension too low	Adjust spring tension on basket so basket penetrates ground 1"-2"
<b>TRACTOR WHEELS SLIPPING</b>	
Poor field conditions	Wait until the field is dry
Tractor not weighted properly to utilize full horse power	Add weight to tractor as recommended by the manufacturer. See OPERATIONS section "Leveler Bar"
<b>PLUGGING</b>	
Poor field conditions	Wait until the field is dry
Leveler bar working depth set too deep	Raise working depth. See Field Adjustments "Leveler Bar"
Leveler bar spring pressure set too high	Decrease spring pressure. See Field Adjustments "Leveler Bar"
Notched blades turn erratically	Be sure blades are assembled in a spiral pattern on the gang
Soil packing between blades	Install optional scraper kit
<b>ATTACHING IMPLEMENT TO TRACTOR</b>	
Category I & II hitch pins	Purchase bushings from either your dealer or quick hitch manufacturer to insure proper attachment
<b>POOR PENETRATION</b>	
Gang angle too shallow	Increase angle on gangs
Ground too hard	Make multiple passes with proper disk, use plow or soil ripper to loosen compacted ground
Soil conditioning basket spring tension too high	Reduce spring tension on baskets
<b>TIRE TRACKS NOT ELIMINATED</b>	
Ground too wet	Wait for ground to dry
Insufficient tilling of soil	Add optional soil conditioning basket to disk
Tractor is too heavy	Remove weights or use lighter tractor
Soil conditioning basket not penetrating	Increase spring tension so basket penetrates soil 1"-2"
Tractor tires are set too wide	Move tires to narrower setting or use wider tandem disk

## Complete Torque Chart

### Cap screws - Grade 5

**NOTE:**

- Grade 5 cap screws can be identified by three radial dashes on the head. 
- For wheel torque requirements, refer to Wheels and Tires.
- Tighten U-bolts evenly and equally to have the same number of threads exposed on each end.

SIZE	FOOT POUNDS	NEWTON METERS
1/4-20 1/4-28	8-10 9-11	11-13 12-15
5/16-18 5/16-24	15-17 17-19	20-23 23-26
3/8-16 3/8-24	25-28 28-31	34-38 38-42
7/16-14 7/16-20	40-45 45-50	54-61 61-68
1/2-13 1/2-20	62-68 68-75	84-92 92-102
9/16-12 9/16-18	90-98 100-110	122-133 134-148
5/8-11 5/8-18	120-135 124-137	162-183 168-186
3/4-10 3/4-16	200-220 210-230	270-300 285-310
7/8-9 7/8-14	330-350 360-380	425-475 460-515
1-8 1-14	500-525 540-560	675-710 730-760
1 1/8-7 1 1/8-12	600-635 665-700	815-860 920-950
1 1/4-7 1 1/4-12	850-895 940-990	1150-1215 1275-1340
1 3/8-6 1 3/8-12	1125-1175 1280-1335	1525-1590 1735-1810
1 1/2-6 1 1/2-12	1500-1560 1685-1755	2035-2115 2285-2380

### IMPORTANT

- Follow these torque recommendations except when specified in text.

## Complete Torque Chart

### Capscrews - Grade 8

**NOTE:**

- Grade 8 capscrews can be identified by six radial dashes on the head.
- For wheel torque requirements, refer to Wheels and Tires.
- Tighten U-bolts evenly and equally to have the same number of threads exposed on each end.



SIZE	FOOT POUNDS	NEWTON METERS
5/16-18	20-22	27-30
5/16-24	21-23	28-31
3/8-16	35-39	47-53
3/8-24	36-41	49-55
7/16-14	54-58	73-78
7/16-20	55-60	75-80
1/2-13	82-88	110-120
1/2-20	94-99	125-135
9/16-12	127-134	170-180
9/16-18	147-155	199-210
5/8-11	160-170	215-230
5/8-18	165-175	225-235
3/4-10	280-295	380-400
3/4-16	330-365	445-495
7/8-9	410-430	555-580
7/8-14	420-440	570-595
1-8	630-650	850-880
1-14	680-700	920-950
1 1/8-7	900-930	1220-1260
1 1/8-12	930-950	1260-1290
1 1/4-7	1250-1300	1695-1760
1 1/4-12	1280-1320	1735-1790

### IMPORTANT

- Follow these torque recommendations except when specified in text.

**Notes**

Please visit [www.unverferth.com/parts/](http://www.unverferth.com/parts/) for the most current parts listing.

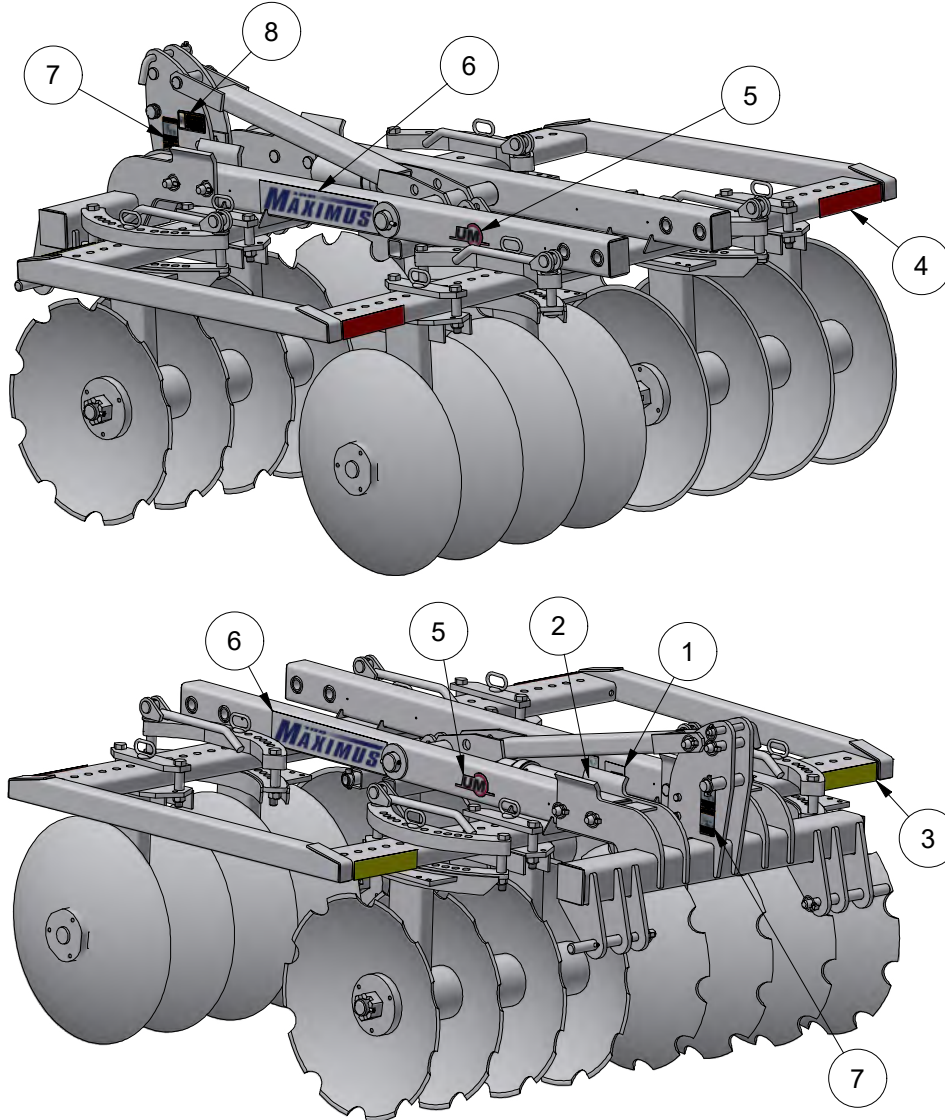
## Section V

# Parts

Safety Decals .....	5-3
Disk Frame, Hitch and Mast .....	5-3
Disk Gang Components .....	5-4
Accessories.....	5-6
Blade Scraper Kits .....	5-6
Blade Extension Kits .....	5-7
Center Shack\.....	5-8
Side Shield .....	5-10
Hitch Extender .....	5-11
Blade Cover Bundle .....	5-12
Bearing Shield Kit .....	5-13
Rolling Harrow Attachment - 6' .....	5-14
Rolling Harrow Attachment - 7' .....	5-16
Rolling Harrow Attachment - 8' .....	5-18
Rolling Harrow Attachment - 9' .....	5-20
Rolling Harrow Attachment - 10' .....	5-22

**Decals**

Please visit [www.unverferth.com/parts/](http://www.unverferth.com/parts/) for the most current parts listing.

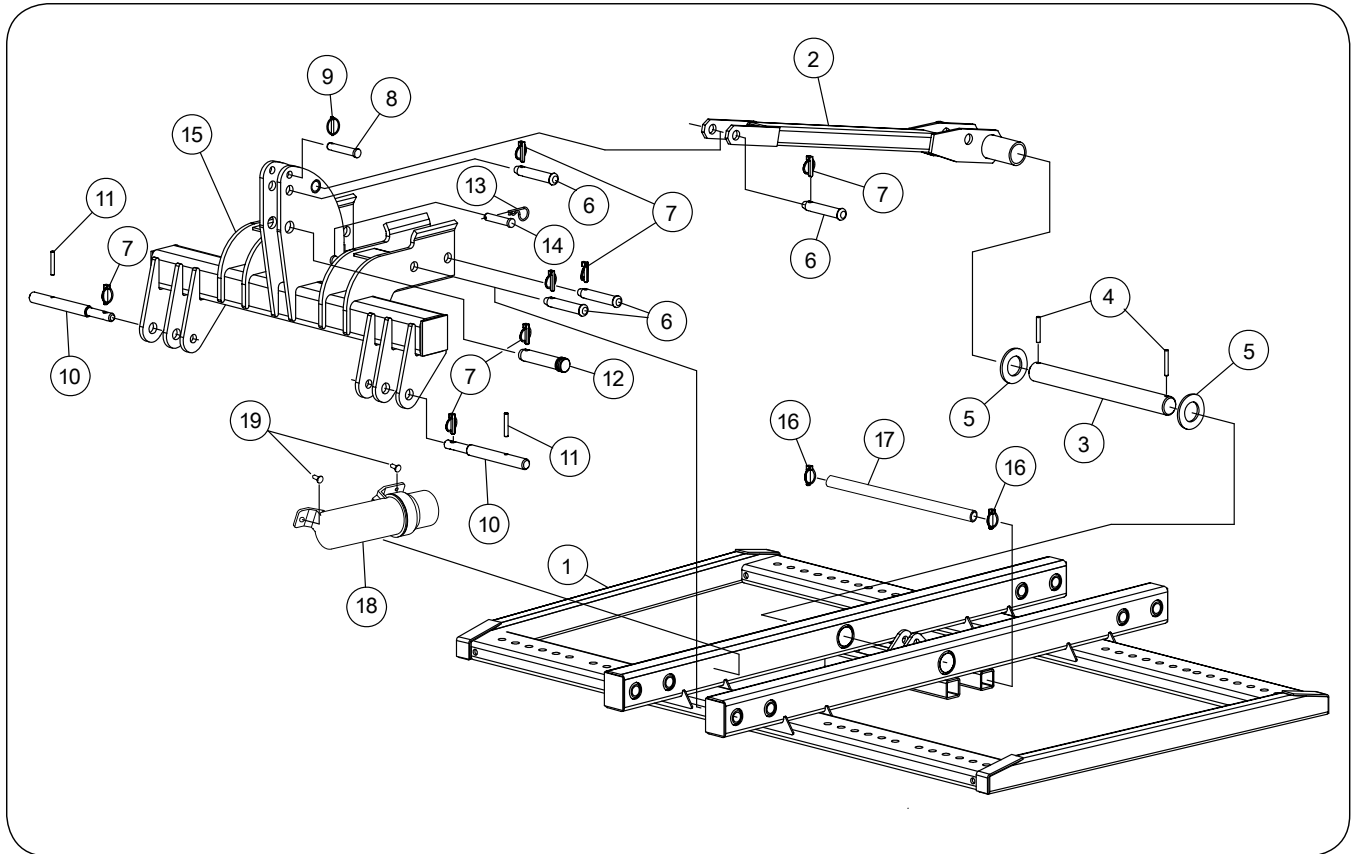


ITEM	DESCRIPTION	PART NO.	QTY.	NOTES
1	Serial Number Decal 2"x3"	72579	1	
2	FEMA Member 2-1/2"x1-1/2"	91605	2	
3	Amber Reflector 2"x9"	9003127	2	
4	Red Reflector 2"x9"	9003126	1	
5	Unverferth Swoosh 2-1/2"x5-3/4"	901765	1	
6	Maximus, 3-1/2"x17-1/2"	900652	2	
7	Warning, Do Not Stand Between 2-1/8"x5-1/2"	97722	2	
8	Warning, Read Operators Manual 2"x4"	97961	1	



**Disk Frame, Hitch and Mast**

Please visit [www.unverferth.com/parts/](http://www.unverferth.com/parts/) for the most current parts listing.

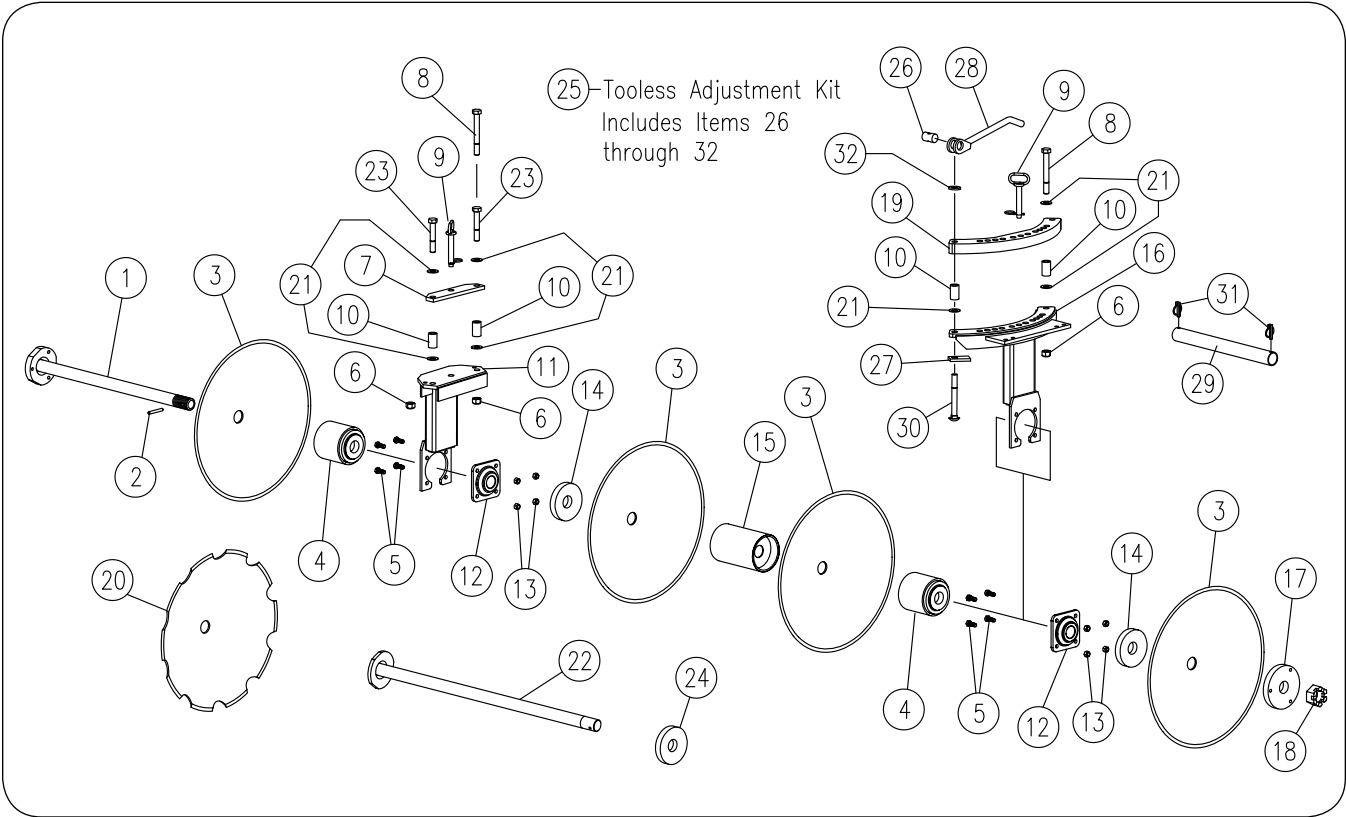


ITEM	DESCRIPTION	PART NO.	QTY.	NOTES
1	Disk 7' Frame Weldment (Shown)	71772R	1	
	Disk 6' Frame Weldment	72948R		
2	Mast Link Weldment (Short) 41-19/32" Overall	72426R	1	
3	Pin 2" Dia. x 20"	71782B	1	
4	Spiral Pin 3/8" Dia. x 2-3/4"	91144-210	2	
5	Flat Washer 2"	9405-164	2	
6	Clevis Pin 1" Dia. x 5-7/16"	9950	6	
7	Lynch Pin 7/16" Dia. x 1 3/4"	9951	9	
8	Bent Pin 3/4" Dia. x 5"	9501179	1	
9	Klik-Pin 3/16" Dia. x 1-9/16"	9093	1	
10	Pin 1 1/8" Dia. x 11-7/8"	71387	2	
11	Spiral Pin 3/8" Dia. x 2-1/2"	91144-209	2	
12	Pin 1 1/4" Dia. x 6-1/2"	99571	2	
13	Hair Pin 5/32"x3"	95959	2	
14	Clevis Pin For Shank 3/4"x3-1/2"	9981	2	
15	3-Pt. Hitch Weldment (Short)	72425R	1	
16	Lynch Pin 7/16"x2"	95031	2	
17	Pipe/Handle Extender	72971B	1	
18	Manual Tube Holder	900552	1	
19	Screw/Self Drill 1/4"-14x1"	9512	2	

NOTE: Refer to page 5-2 for optional 4" longer hitch components

**Disk Gang Components**

Please visit [www.unverferth.com/parts/](http://www.unverferth.com/parts/) for the most current parts listing.



**Disk Gang Components**

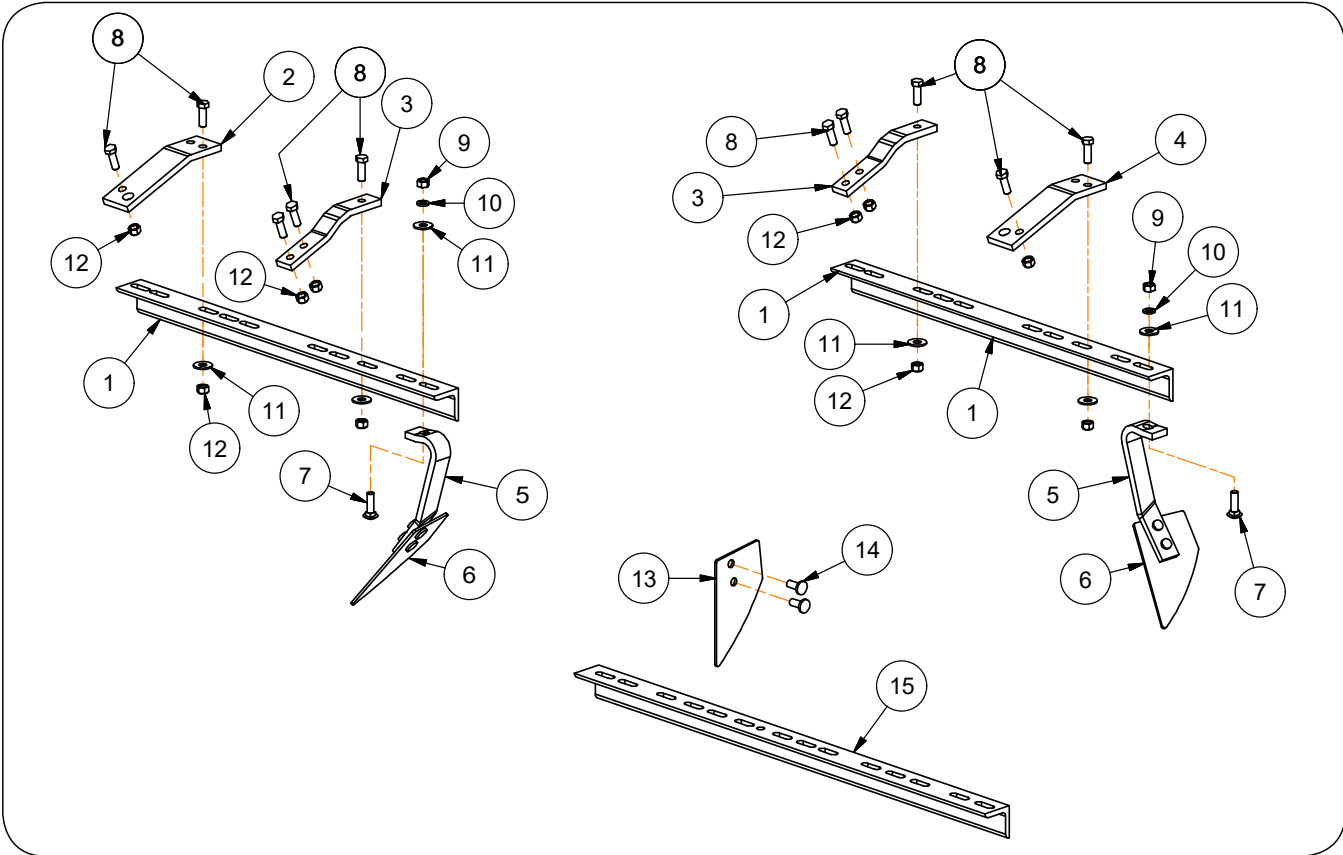
Please visit [www.unverferth.com/parts/](http://www.unverferth.com/parts/) for the most current parts listing.

ITEM	DESCRIPTION	PART NO.	QTY.	NOTES
1	Spindle Weldment 1-3/4"Dia. x 31-1/4" (4-Blade)	86494B		
2	Spiral Pin 3/8"Dia. x 2-3/4"	91144-210		
3	Blade-Disk 24"OD (Smooth Contour w/3" Concavity)	93405		
4	Spool 5-5/8" Weldment	86492B		
5	Capscrew 1/2"-13UNC x 1-1/4" (Grade 5)	9390-100		
6	Locknut 3/4"-10UNC	9802		
7	Bar 5/8" x 2-1/2" x 10-9/16"	72917B		
8	Capscrew 3/4"-10UNC x 5-1/2" (Grade 5)	9390-156		
9	Hitch Pin 3/4"Dia. x 4-1/4" w/Hairpin Cotter	97035		
10	Tube/Bushing 1"OD x 3/4"ID x 1-15/16"	99622		
11	Bearing Standard Weldment w/Small Radius Plate	72918B		
12	Bearing w/4-Hole Mounting	93643		
13	Locknut 1/2"-13UNC	9800		
14	Spacer 5-9/16" OD w/Countersink	84983B		
15	Spool 8-3/4" Weldment	86488B		
16	Bearing Standard Weldment w/Radius	71749B		
17	Washer 6-1/2" OD w/Holes (4-Blade)	71752B		
18	Slotted Nut 1-3/4"-5UNC (Grade 2)	9393-081		
19	Top Bar Angle Radius Plate	72945B		
20	Blade-Disk 24"OD (Notched Contour w/3" Concavity)	93642		
21	Machinery Bushing 1-1/4 OD x 3/4"ID x .074"	TA500309		
22	Arbor Bolt Weldment 1-3/4"Dia. x 41" (5-Blade)	72873B		
23	Capscrew 3/4"-10UNC x 4-1/2" Lg. (Grade 5)	9390-154		
24	Convex Quarter Spool/Spacer (5-Blade)	85643B		
25	Tooless Adjustment Kit Includes Items 26-32	72955		
26	Bar/Trunnion 1-1/4"Dia. x 2"	72943		
27	Bar/Washer 3/8" x 2" x 3"	72944		
28	Handle Weldment	72946		
29	Pipe/Handle Extender	72971B		
30	Carriage Bolt 3/4"-10UNC x 6-1/2" (Grade 5)	9388-172		
31	Lynch Pin 7/16"Dia. x 1-3/4"	9951		
32	Flat Washer 7/8"	97041		

**Accessories**

Please visit [www.unverferth.com/parts/](http://www.unverferth.com/parts/) for the most current parts listing.

**Blade Scraper Kits**



ITEM	DESCRIPTION	PART NO.	QTY.	NOTES
1	Scraper Angle (4-Blade)	72977B		
2	Scraper Mounting Bar for Left-Front & Right-Rear	72981B		
3	Scraper Mounting Bar	72980B		
4	Scraper Mounting Bar for Right-Front & Left-Rear	72979B		
5	Scraper Assembly for Left-Front & Right-Rear	806140B		Includes Items 13 & 14
6	Scraper Assembly for Right-Front & Left-Rear	806141B		Includes Items 13 & 14
7	Carriage Bolt 1/2-13 x 1 3/4" Lg.	9388-105		
8	Capscrew 1/2-13 x 1 1/2" Lg.	9390-101		
9	Hex Nut 1/2-13	9394-010		
10	Lock Washer 1/2	9404-025		
11	Flat Washer 1/2	9405-088		
12	Locknut 1/2-13	9800		
13	Scraper	806138		Scrapers (806138) and Rivets (806144) are bundled & shipped already assembled as part of Scraper Assemblies 806140B (Rear RH/Front LH) and 806141B (Rear LH/Front RH)
14	Rivet 1/2 x 1 3/16	806144		
15	Scraper Angle (5-Blade)	72978B		

Scraper Kits available (Include scrapers, mounting bars, and hardware):

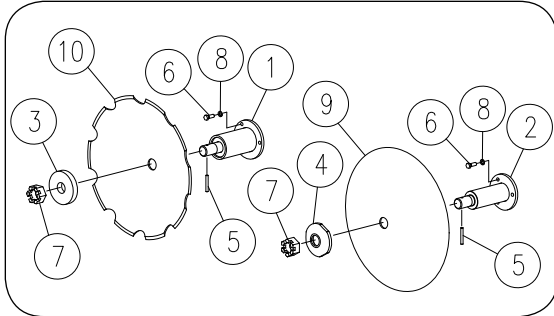
71801B - Scraper Blade 4 LH & RH Kit

72887B - Scraper Blade 5 LH & RH Kit

**Accessories**

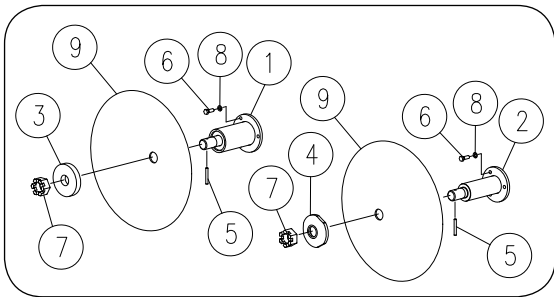
Please visit [www.unverferth.com/parts/](http://www.unverferth.com/parts/) for the most current parts listing.

**Blade Extension Kits**



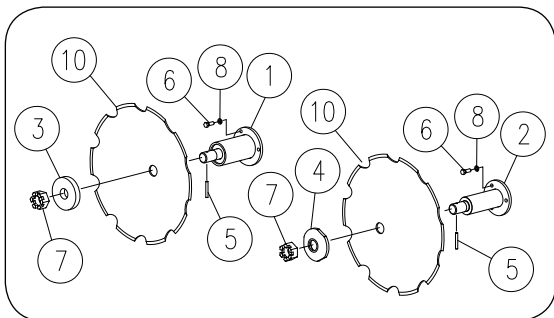
**BLADE EXTENSION BUNDLE #71802B**

ITEM	DESCRIPTION	PART NO.	QTY.
1	Blade Axle 4" Dia. Weldment	71792B	2
2	Blade Axle 3" Dia. Weldment	71796B	2
3	Spacer 5-9/16" Dia. Convex Quarter Spool	85643B	2
4	Collar 5-9/16" Dia. Concaved Quarter Spool	85843B	2
5	Spiral Pin 3/8" Dia. x 2-3/4"	91144-210	4
6	Capscrew 1/2-13UNC x 1-1/2"	9390-101	12
7	Slotted Nut 1-3/4"-5UNC	9393-081	4
8	Lock Washer 1/2"	9404-025	12
9	Blade-Disk 24" OD (Smooth)	93405	2
10	Blade-Disk 24" OD (Notched)	93642	2



**BLADE EXTENSION BUNDLE #72568B**

ITEM	DESCRIPTION	PART NO.	QTY.
1	Blade Axle 4" Dia. Weldment	71792B	2
2	Blade Axle 3" Dia. Weldment	71796B	2
3	Spacer 5-9/16" Dia. Convex Quarter Spool	85643B	2
4	Collar 5-9/16" Dia. Concaved Quarter Spool	85843B	2
5	Spiral Pin 3/8" Dia. x 2-3/4"	91144-210	4
6	Capscrew 1/2-13UNC x 1-1/2"	9390-101	12
7	Slotted Nut 1-3/4"-5UNC	9393-081	4
8	Lock Washer 1/2"	9404-025	12
9	Blade-Disk 24" OD Smooth	93405	4



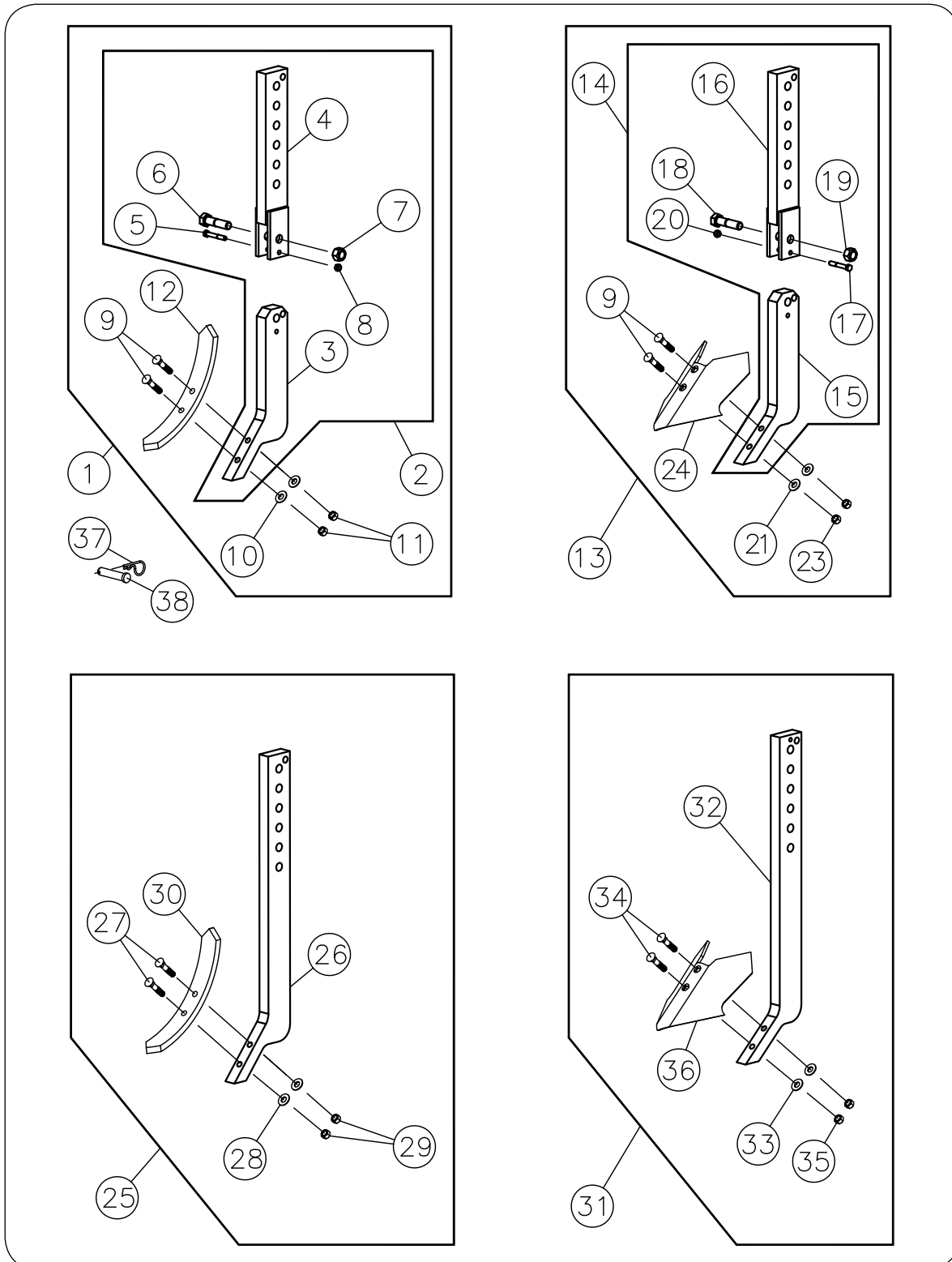
**BLADE EXTENSION BUNDLE #72569B**

ITEM	DESCRIPTION	PART NO.	QTY.
1	Blade Axle 4" Dia. Weldment	71792B	2
2	Blade Axle 3" Dia. Weldment	71796B	2
3	Spacer 5-9/16" Dia. Convex Quarter Spool	85643B	2
4	Collar 5-9/16" Dia. Concaved Quarter Spool	85843B	2
5	Spiral Pin 3/8" Dia. x 2-3/4"	91144-210	4
6	Capscrew 1/2-13UNC x 1-1/2"	9390-101	12
7	Slotted Nut 1-3/4"-5UNC	9393-081	4
8	Lock Washer 1/2"	9404-025	12
9	Blade-Disk 24" OD (Notched)	93642	4

Accessories

Please visit [www.unverferth.com/parts/](http://www.unverferth.com/parts/) for the most current parts listing.

Center Shank



**Accessories**

**Please visit [www.unverferth.com/parts/](http://www.unverferth.com/parts/) for the most current parts listing.**

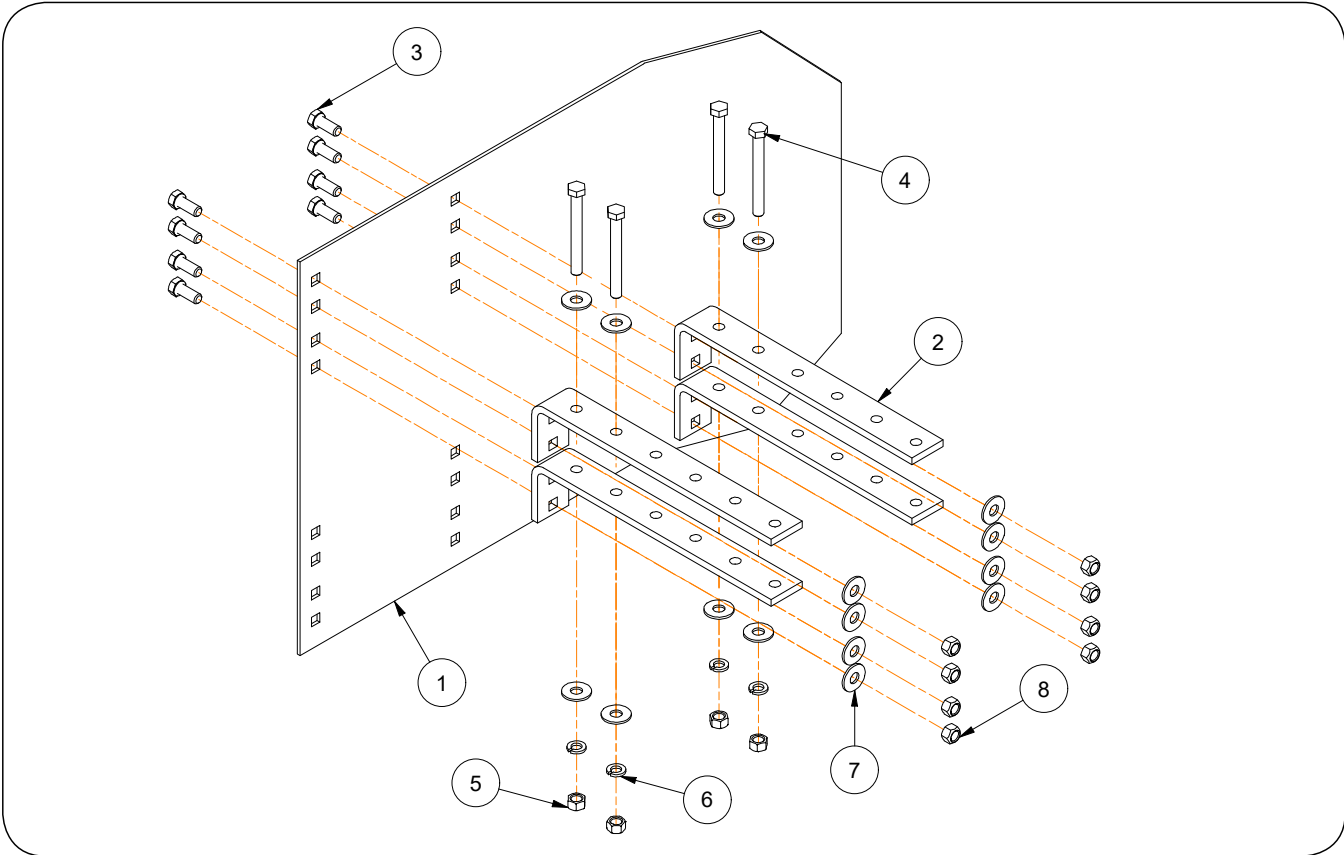
**Center Shank**

ITEM	DESCRIPTION	PART NO.	QTY.	NOTES	
1	Shear-Bolt Shank w/ 2" Chisel Point & Hardware	72932B	1		
2	Shank Assembly Shear-Bolt w/50° Angle	72927B	1		
	3	Shank w/50° Angle	72925B	1	
	4	Shank Top Weldment	72928B	1	
	5	Capscrew 3/8-16UNC x 2 1/2" Lg. (Grade 5)	9390-061	1	
	6	Capscrew 3/4-10UNC x 3" Lg. (Grade 5)	9390-149	1	
	7	Locknut 3/4-10UNC	9802	1	
	8	Locknut 3/8-16UNC	9928	1	
	9	Plow Bolt 1/2-13UNC x 2 1/2" Lg. (Grade 5)	91143	2	
10	Flat Washer 1/2"	9405-088	2		
11	Locknut 1/2-13UNC	9800	2		
12	Point 5/8x2 Reversible	96748	1		
13	Shear-Bolt Shank w/ 6" Furrower Shovel & Hdw	72933B	1		
	Shear-Bolt Shank w/ 8" Furrower Shovel & Hdw	72934B	1		
	Shear-Bolt Shank w/ 10" Furrower Shovel & Hdw	72935B	1		
14	Shank Assembly Shear-Bolt w/47° Angle	72926B	1		
	15	Shank w/47° Angle	72924B	1	
	16	Shank Top Weldment	72928B	1	
	17	Capscrew 3/8-16UNC x 2 1/2" Lg. (Grade 5)	9390-061	1	
	18	Capscrew 3/4-10UNC x 3" Lg. (Grade 5)	9390-149	1	
	19	Locknut 3/4-10UNC	9802	1	
	20	Locknut 3/8-16UNC	9928	1	
	21	Flat Washer 7/16"	95380	2	
22	Plow Bolt 7/16-14UNC x 2 1/2 (Grade 5)	95381	2		
23	Locknut 7/16-14UNC	9799	2		
24	Shovel 6 x 1/4 Furrower	97409	1		
	Shovel 8 x 3/16 High Wing Furrower	97408	1		
	Shovel 10 x 3/16 High Wing Furrower	95395	1		
25	Shank w/ 2" Chisel Point & Hardware	72765B	1		
26	Shank w/50° Angle	72604B	1		
27	Plow Bolt 1/2-13UNC x 2 1/2" Lg. (Grade 5)	91143	2		
28	Flat Washer 1/2"	9405-088	2		
29	Locknut 1/2-13UNC	9800	2		
30	Point 5/8x2 Reversible	96748	1		
31	Shank w/ 6" Furrower Shovel & Hdw	72766B	1		
	Shank w/ 8" Furrower Shovel & Hdw	72767B	1		
	Shank w/ 10" Furrower Shovel & Hdw	72768B	1		
32	Shank w/47° Angle	86672B	1		
33	Flat Washer 7/16"	95380	2		
34	Plow Bolt 7/16-14UNC x 2 1/2 (Grade 5)	95381	2		
35	Locknut 7/16-14UNC	9799	2		
36	Shovel 6 x 1/4 Furrower	97409	1		
	Shovel 8 x 3/16 High Wing Furrower	97408	1		
	Shovel 10 x 3/16 High Wing Furrower	95395	1		
37	Hair Pin 5/32" Dia. x 3	95959	1		
38	Clevis Pin For Shank 3/4" Dia. x 3 1/2	9981	1		

**Accessories**

Please visit [www.unverferth.com/parts/](http://www.unverferth.com/parts/) for the most current parts listing.

**Side Shield**



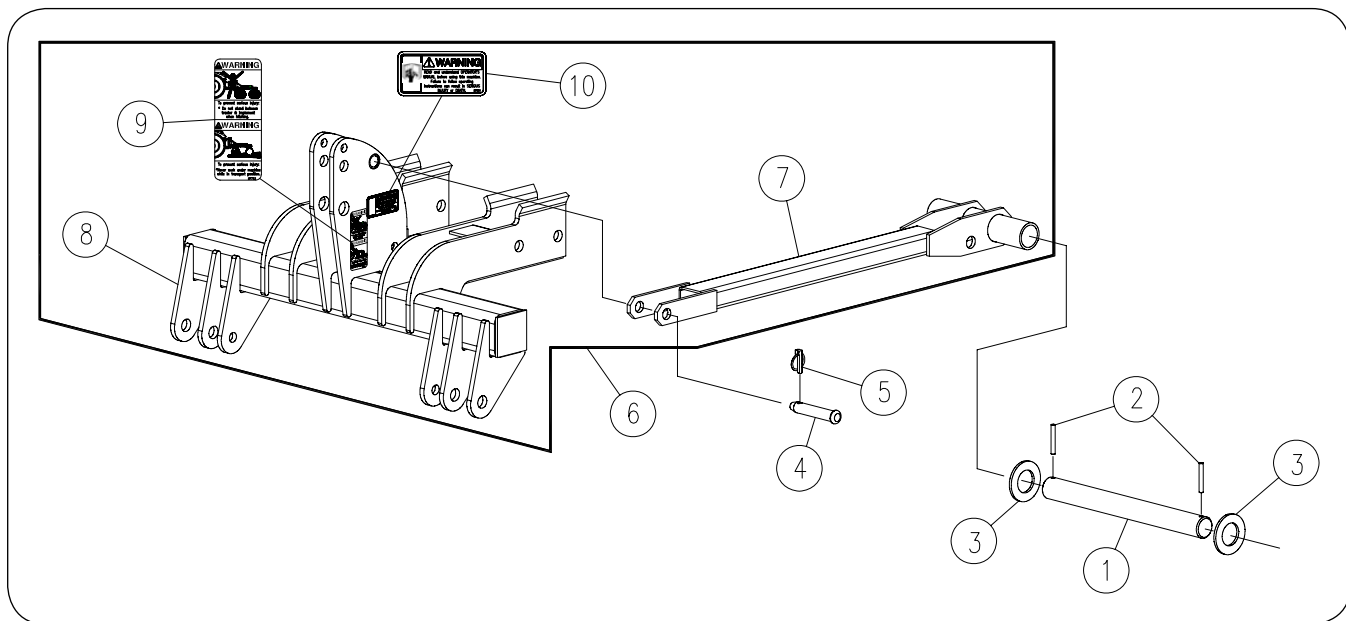
ITEM	DESCRIPTION	PART NO.	QTY.	NOTES
	Side Shield Kit	71809B	1	Includes Items 1-9
1	Side Shield Plate	71807B	2	
2	Angle Bar	71808B	8	
3	Capscrew 1/2"-13UNC x 1-1/4"	9388-103	16	
4	Capscrew 1/2"-13UNC x 4-v1/2"	9390-112	8	
5	Hex Nut 1/2"-13UNC	9394-010	8	
6	Lock Washer 1/2"	9404-025	8	
7	Flat Washer 1/2"	9405-088	16	
8	Locknut 1/2"-13UNC	9800	16	



**Accessories**

Please visit [www.unverferth.com/parts/](http://www.unverferth.com/parts/) for the most current parts listing.

**Hitch Extender**

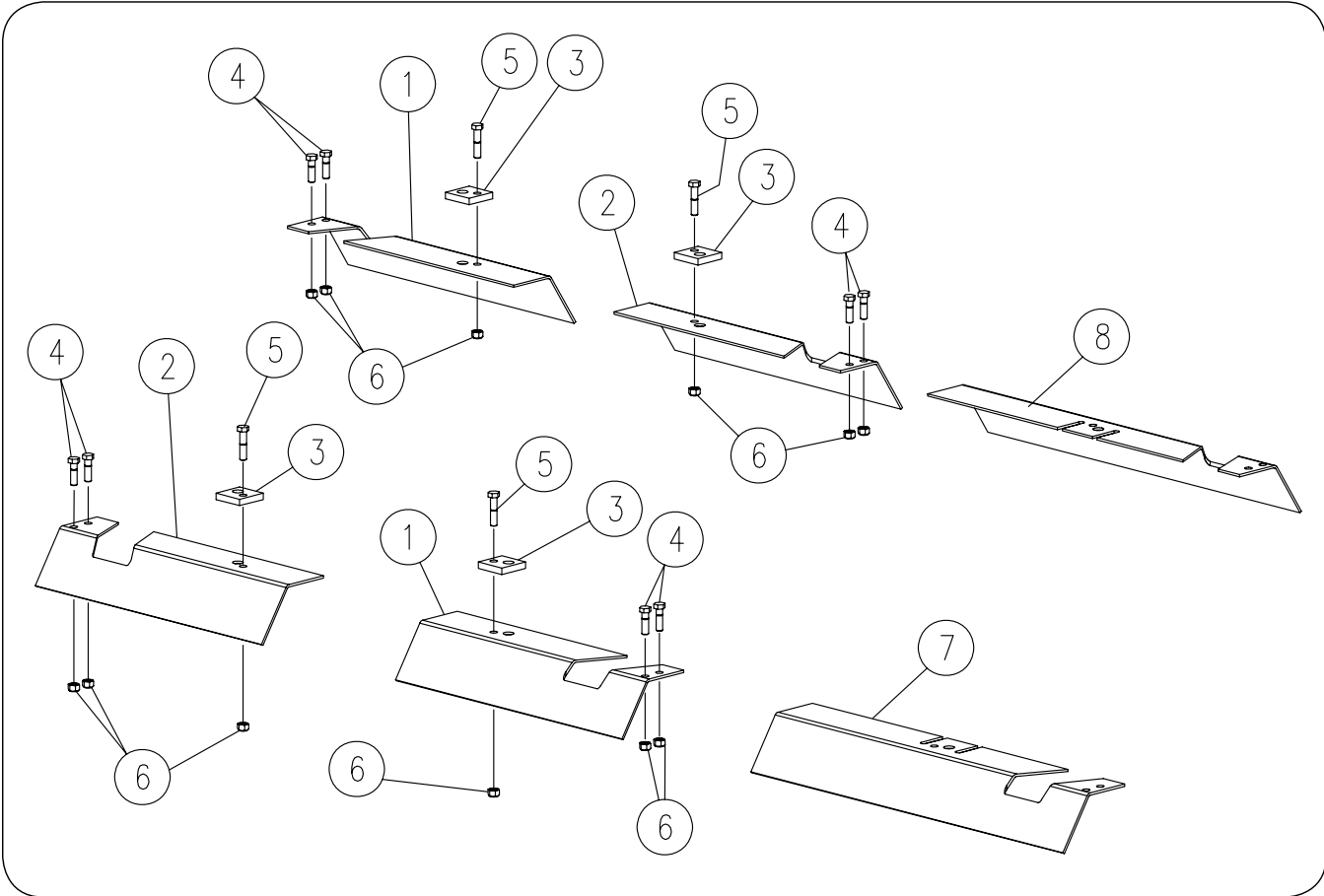


ITEM	DESCRIPTION	PART NO.	QTY.	NOTES
1	Pin 2" Dia. x 20 Long	71782B		
2	Spiral Pin 3/8" Dia. x 2 3/4 Long	91144-210		
3	Flat Washer 2"	9405-164		
4	Clevis Pin 1" Dia. x 5 7/16 Long	9950		
5	Lynch Pin 7/16" Dia. x 1 3/4 Long	9951		
6	3-Pt. Hitch Bundle (Option)	72427R		Moves Disk 4" Farther Rearward Away From Tractor
7	Mast Weldment (Long) 45 15/32" Overall	71778R		
8	3-Pt. Hitch Weldment (Long) w/Decals	71761R		
9	Decal, WARNING "To Prevent Injury..."	97722		
10	Decal, WARNING "Read & Understand..."	97961		

**Accessories**

Please visit [www.unverferth.com/parts/](http://www.unverferth.com/parts/) for the most current parts listing.

**Blade Cover Bundle**

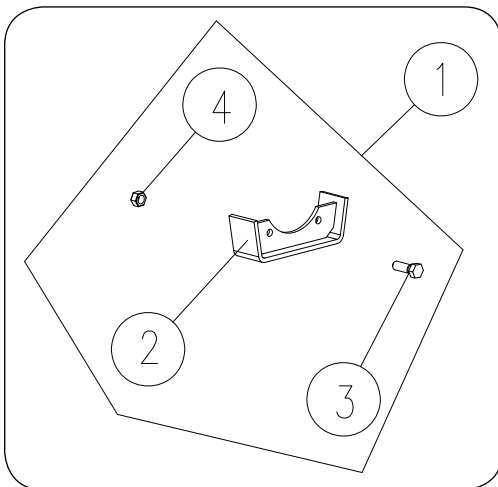


ITEM	DESCRIPTION	PART NO.	QTY.	NOTES
1	Blade Cover Plate (4-Blade)	71803B	2/4	
2	Blade Cover Plate (4-Blade)	71804B	2/4	
3	Spacer	71806B	8	
4	Capscrew 1/2-13UNC x 1 3/4	9390-102	16	
5	Capscrew 1/2-13UNC x 2 1/4	9390-104	8	Includes Items 13 & 14
6	Locknut 1/2-13UNC	9800	24	Includes Items 13 & 14
7	Blade Cover Plate (5-Blade)	72937B	2/4	
8	Blade Cover Plate (5-Blade)	72938B	2/4	

**Accessories**

Please visit [www.unverferth.com/parts/](http://www.unverferth.com/parts/) for the most current parts listing.

**Bearing Shield Kit**

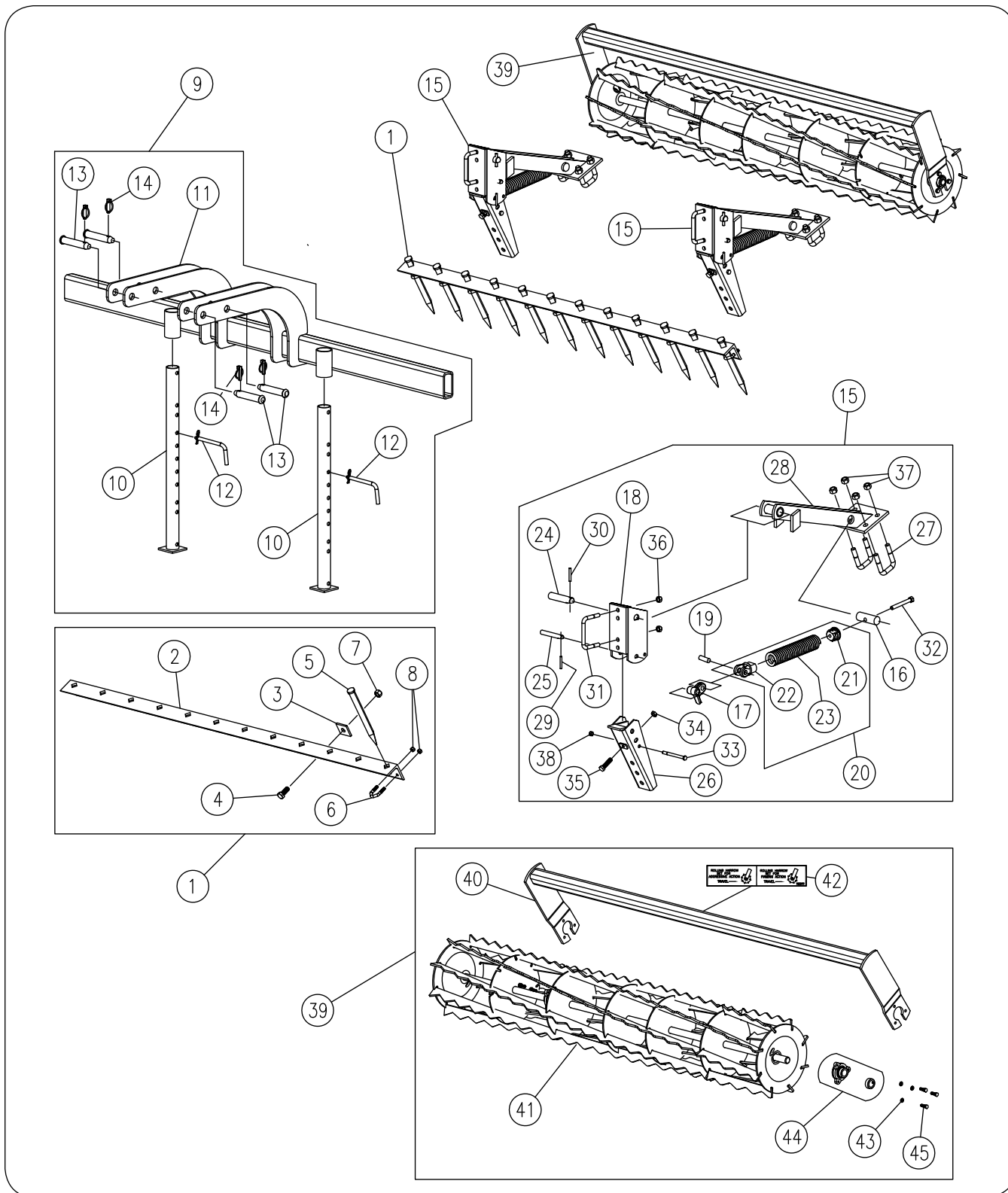


ITEM	DESCRIPTION	PART NO.	QTY.	NOTES
1	Bearing Shield Kit	72914B	1	
2	Bearing Shield Weldment	72913B	1	
3	Capscrew 1/2"-13UNC x 1-1/2"	9390-101	1	
4	Locknut 1/2"-13UNC	94981	1	

Accessories

Please visit [www.unverferth.com/parts/](http://www.unverferth.com/parts/) for the most current parts listing.

Rolling Harrow Attachment - 6'



## Maximus 100 — Parts

### Accessories

Please visit [www.unverferth.com/parts/](http://www.unverferth.com/parts/) for the most current parts listing.

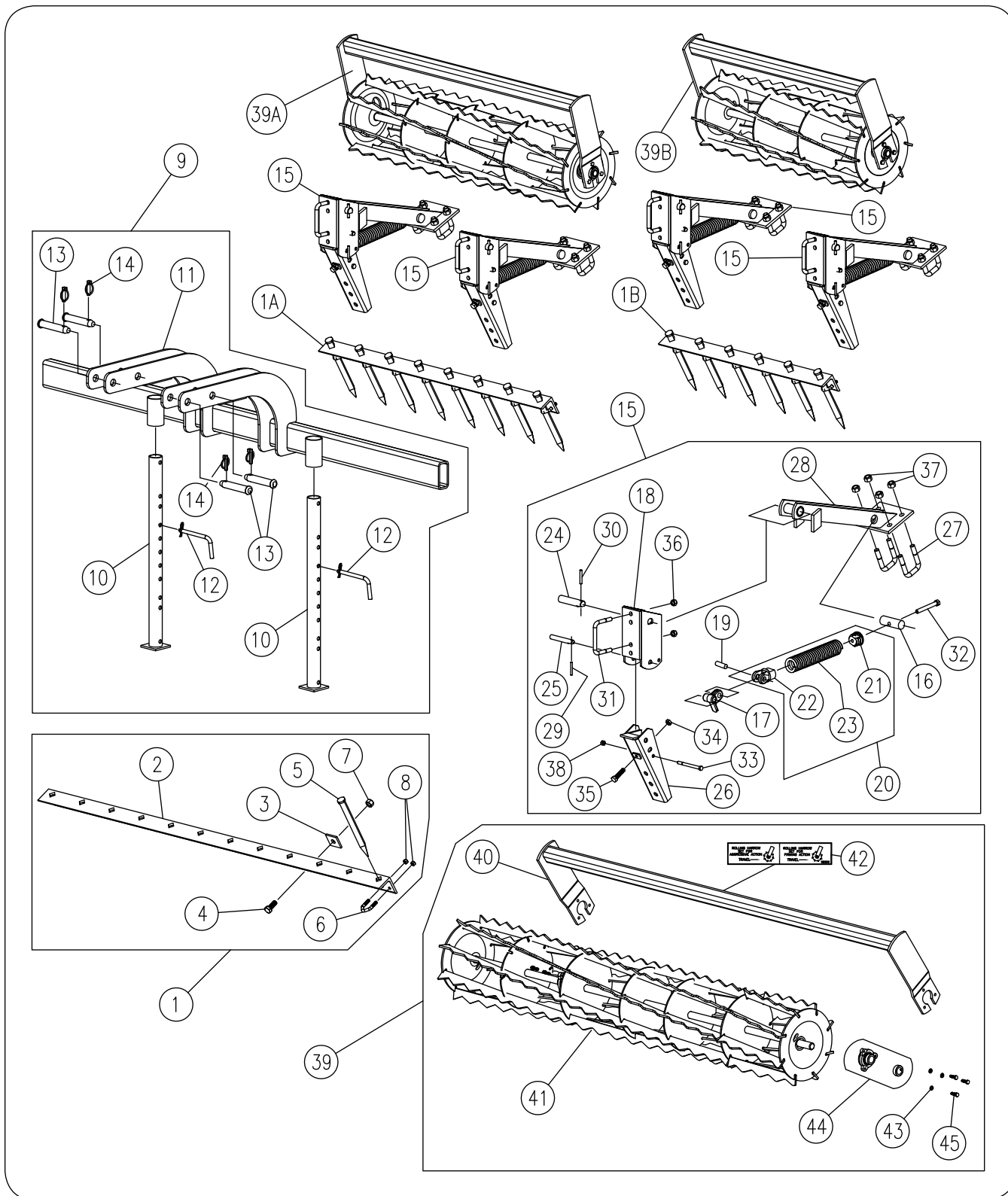
### Rolling Harrow 6' Attachment

ITEM	DESCRIPTION	PART NO.	QTY	NOTES
	Rolling Harrow 6' Attachment	72589B	1	
1	One-Bar 6' Assembly	71579B	1	
2	Angle 6' Drag Bar	71580B	1	
3	Washer 1/4 x 2 x 2 1/8	83284B	2	
4	Capscrew 5/8-11UNC x 1 1/2 (Grade 5)	9390-122	2	
5	Spike Tooth 11" Long	9634P	12	
6	V-Bolt 3/8-16UNC x 2	9635	12	
7	Locknut 5/8-11UNC	9801	2	
8	Locknut 3/8-16UNC	9928	24	
9	Rolling Harrow Attachment Mount Bundle	72586B	1	
10	Pipe Stand 28" Weldment	71402B	2	
11	Mount Weldment	71812B	1	
12	Bent Pin 1/2" Dia. x 4 w/Cotter Pin	900801	2	
13	Clevis Pin 1" Dia. x 5 7/16	9950	4	
14	Lynch Pin 7/16" Dia. x 1 3/4	9951	4	
15	Mounting Arm Assembly	84763B	2	
16	Trunnion 1 1/4" Dia. x 3 3/4	86262	2	
17	Link/Spring Adjuster	81253B	2	
18	Mounting Bracket Weldment	81308B	2	
19	Pin 5/8" Dia. x 1 7/8	81321	2	
20	Spring Plug Assembly	82251B	2	
21	Spring Plug	8001B	2	
22	Spring Clevis	81249B	2	
23	Spring	9798B	2	
24	D-Pin 1" Dia. x 4 1/2	84356B	2	
25	D-Pin 5/8" Dia. x 4 3/8	84371	2	
26	One-Bar Arm Weldment	84900B	2	
27	U-Bolt 5/8-11UNC x 3 3/8	85620	4	
28	Roller Arm Weldment	86825B	2	
29	Spiral Pin 1/4" Dia. x 1 7/8	91144-165	2	
30	Spiral Pin 5/16" Dia. x 2	91144-186	2	
31	U-Bolt 1/2-13UNC x 3	91434	2	
32	Capscrew 1/2-13UNC x 4 (Full Threaded)	91552	2	
33	Capscrew 3/8-16UNC x 4 1/2 (Grade 5)	9390-068	2	
34	Hex Jam Nut 1/2-13UNC	9395-010	2	
35	Capscrew 1/2-13UNC x 2 (Full Threaded)	97369	2	
36	Locknut 1/2-13UNC	9800	4	
37	Locknut 5/8-11UNC	9801	8	
38	Locknut 3/8-16UNC	9928	2	
39	Basket & Frame 6' Assembly	86388B	1	
40	Frame 6' Roller Weldment	71364B	1	
41	Basket 6' Aggressive Weldment	71423B	1	
42	Decal Rolling Harrow Set	92256	1	
43	Lock Washer 5/16	9404-019	6	
44	Flange Bearing Assembly with 1" Bore	97245B	2	
45	Capscrew 5/16-18UNC x 7/8	97321	6	

Accessories

Please visit [www.unverferth.com/parts/](http://www.unverferth.com/parts/) for the most current parts listing.

Rolling Harrow Attachment - 7'



**Accessories**

Please visit [www.unverferth.com/parts/](http://www.unverferth.com/parts/) for the most current parts listing.

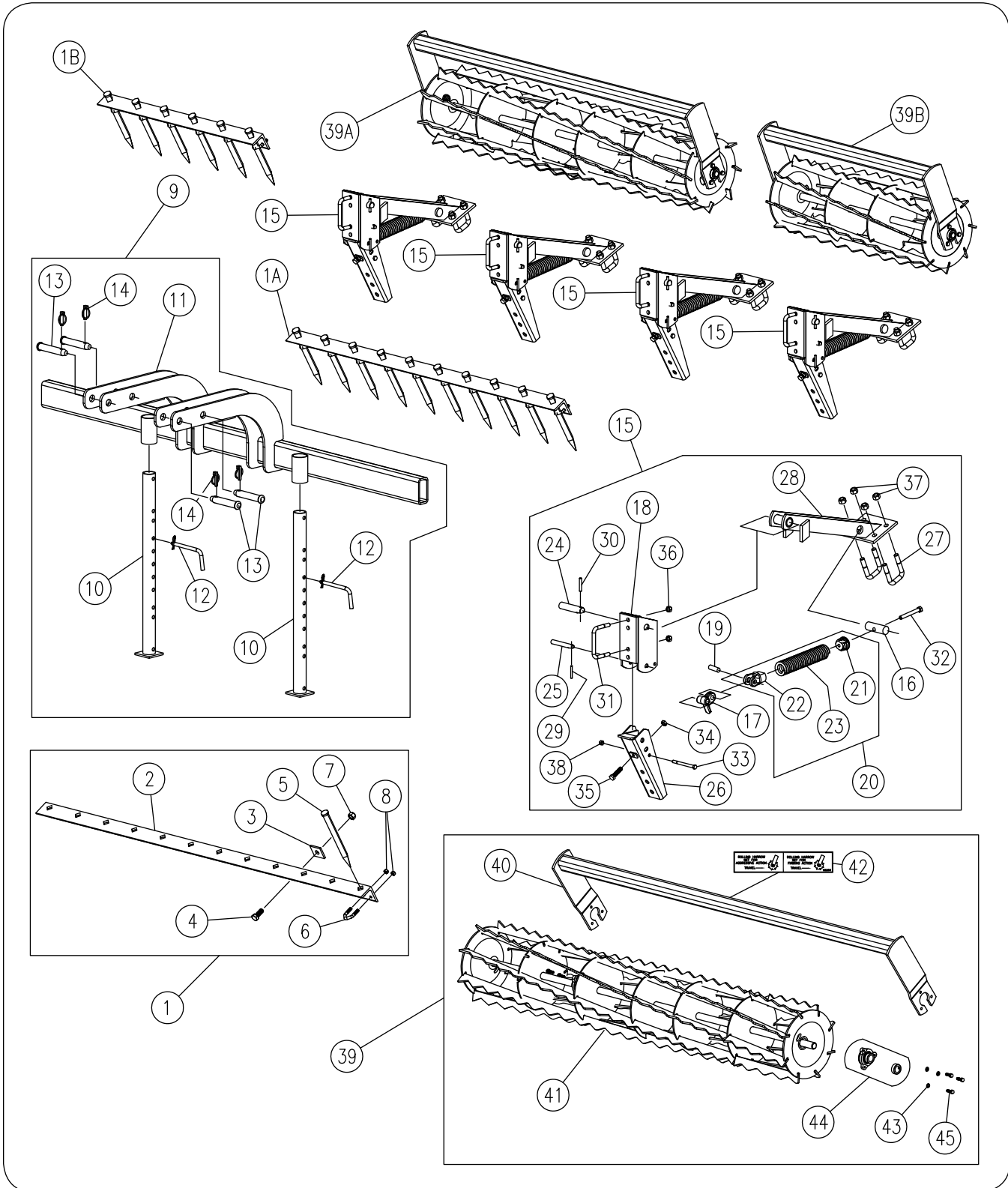
**Rolling Harrow Attachment - 7'**

ITEM	DESCRIPTION	PART NO.	QTY		NOTES
	Rolling Harrow 7' Attachment	72940B	1		
1A	One-Bar 4' Assembly	71182	1		
1B	One-Bar 3' Assembly	71181	1		
			<b>3'</b>	<b>4'</b>	
2	Angle 3' Drag Bar	71184B	1		
	Angle 4' Drag Bar	71185B		1	
3	Washer 1/4 x 2 x 2 1/8	83284B	2	2	
4	Capscrew 5/8-11UNC x 1 1/2 (Grade 5)	9390-122	2	2	
5	Spike Tooth 11" Long	9634P	6	8	
6	V-Bolt 3/8-16UNC x 2	9635	6	8	
7	Locknut 5/8-11UNC	9801	2	2	
8	Locknut 3/8-16UNC	9928	12	16	
9	Rolling Harrow Attachment Mount Bundle	72586B	1		
10	Pipe Stand 28" Weldment	71402B	2		
11	Mount Weldment	71812B	1		
12	Bent Pin 1/2" Dia. x 4 w/Cotter Pin	900801	2		
13	Clevis Pin 1" Dia. x 5 7/16	9950	4		
14	Lynch Pin 7/16" Dia. x 1 3/4	9951	4		
15	Mounting Arm Assembly	84763B	4		
16	Trunnion 1 1/4" Dia. x 3 3/4	86262	4		
17	Link/Spring Adjuster	81253B	4		
18	Mounting Bracket Weldment	81308B	4		
19	Pin 5/8" Dia. x 1 7/8	81321	4		
20	Spring Plug Assembly	82251B	4		
	21 Spring Plug	8001B	4		
	22 Spring Clevis	81249B	4		
	23 Spring	9798B	4		
24	D-Pin 1" Dia. x 4 1/2	84356B	4		
25	D-Pin 5/8" Dia. x 4 3/8	84371	4		
26	One-Bar Arm Weldment	84900B	4		
27	U-Bolt 5/8-11UNC x 3 3/8	85620	8		
28	Roller Arm Weldment	86825B	4		
29	Spiral Pin 1/4" Dia. x 1 7/8	91144-165	4		
30	Spiral Pin 5/16" Dia. x 2	91144-186	4		
31	U-Bolt 1/2-13UNC x 3	91434	4		
32	Capscrew 1/2-13UNC x 4 (Full Threaded)	91552	4		
33	Capscrew 3/8-16UNC x 4 1/2 (Grade 5)	9390-068	4		
34	Hex Jam Nut 1/2-13UNC	9395-010	4		
35	Capscrew 1/2-13UNC x 2 (Full Threaded)	97369	4		
36	Locknut 1/2-13UNC	9800	8		
37	Locknut 5/8-11UNC	9801	16		
38	Locknut 3/8-16UNC	9928	4		
39A	Basket & Frame 4' Assembly	81324	1		
39B	Basket & Frame 3' Assembly	81323	1		
40	Frame 4' Roller Weldment	81327	1		
	Frame 3' Roller Weldment	81326	1		
41	Basket 4' Aggressive Weldment	81123	1		
	Basket 3' Aggressive Weldment	81121	1		
42	Decal Rolling Harrow Set	92256	2		
43	Lock Washer 5/16	9404-019	12		
44	Flange Bearing Assembly with 1" Bore	97245B	4		
45	Capscrew 5/16-18UNC x 7/8	97321	12		

Accessories

Please visit [www.unverferth.com/parts/](http://www.unverferth.com/parts/) for the most current parts listing.

Rolling Harrow Attachment - 8'





**Accessories**

Please visit [www.unverferth.com/parts/](http://www.unverferth.com/parts/) for the most current parts listing.

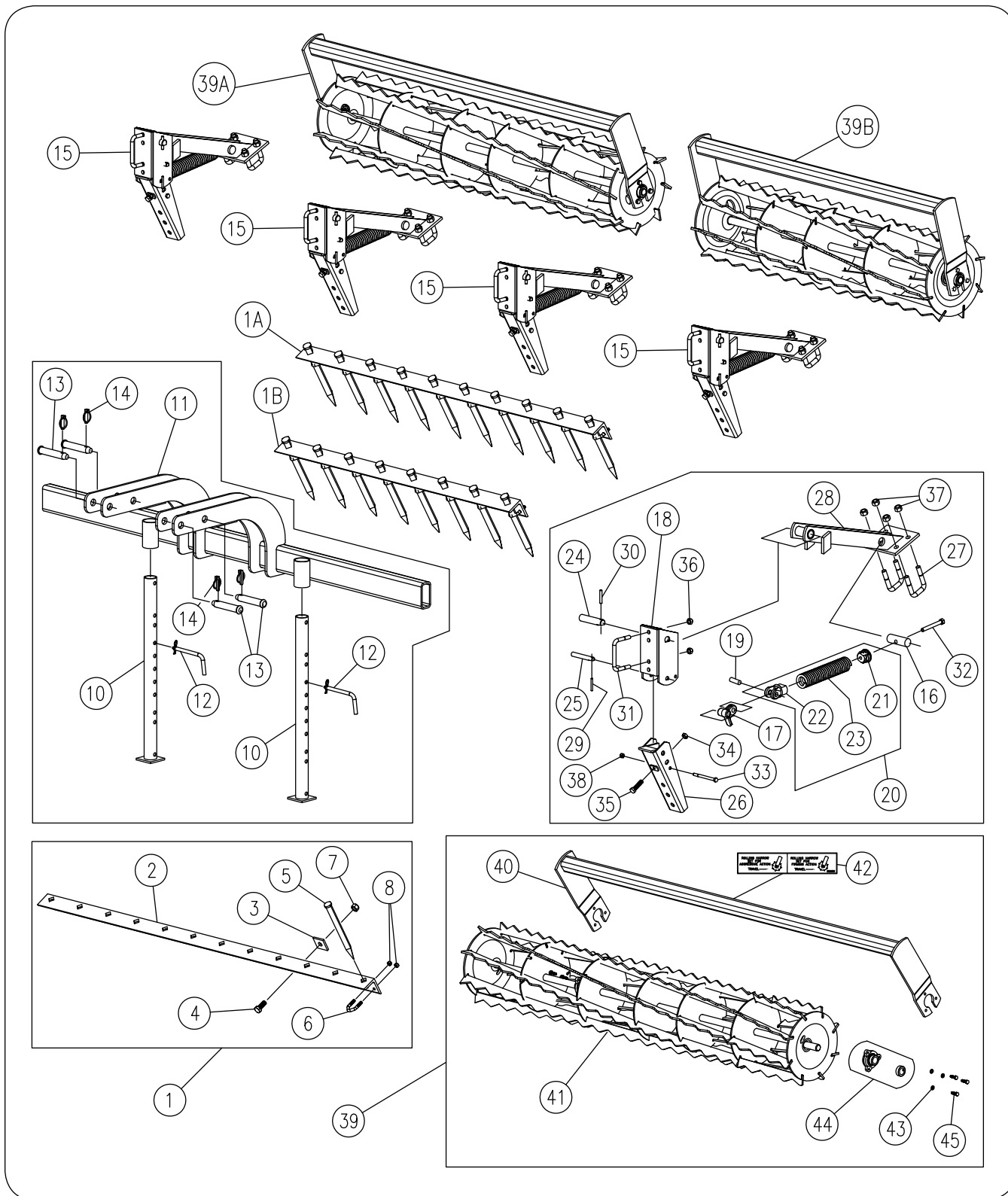
**Rolling Harrow Attachment - 8'**

ITEM	DESCRIPTION	PART NO.	QTY		NOTES
	Rolling Harrow 8' Attachment	71813B	1		
1A	One-Bar 5' Assembly	71183	1		
1B	One-Bar 3' Assembly	71181	1		
			<b>3'</b>	<b>5'</b>	
2	Angle 5' Drag Bar	71184B	1		
	Angle 3' Drag Bar	71185B		1	
3	Washer 1/4 x 2 x 2 1/8	83284B	2	2	
4	Capscrew 5/8-11UNC x 1 1/2 (Grade 5)	9390-122	2	2	
5	Spike Tooth 11" Long	9634P	6	10	
6	V-Bolt 3/8-16UNC x 2	9635	6	10	
7	Locknut 5/8-11UNC	9801	2	2	
8	Locknut 3/8-16UNC	9928	12	20	
9	Rolling Harrow Attachment Mount Bundle	72586B	1		
10	Pipe Stand 28" Weldment	71402B	2		
11	Mount Weldment	71812B	1		
12	Bent Pin 1/2" Dia. x 4 w/Cotter Pin	900801	2		
13	Clevis Pin 1" Dia. x 5 7/16	9950	4		
14	Lynch Pin 7/16" Dia. x 1 3/4	9951	4		
15	Mounting Arm Assembly	84763B	4		
16	Trunnion 1 1/4" Dia. x 3 3/4	86262	4		
17	Link/Spring Adjuster	81253B	4		
18	Mounting Bracket Weldment	81308B	4		
19	Pin 5/8" Dia. x 1 7/8	81321	4		
20	Spring Plug Assembly	82251B	4		
	21 Spring Plug	8001B	4		
	22 Spring Clevis	81249B	4		
	23 Spring	9798B	4		
24	D-Pin 1" Dia. x 4 1/2	84356B	4		
25	D-Pin 5/8" Dia. x 4 3/8	84371	4		
26	One-Bar Arm Weldment	84900B	4		
27	U-Bolt 5/8-11UNC x 3 3/8	85620	8		
28	Roller Arm Weldment	86825B	4		
29	Spiral Pin 1/4" Dia. x 1 7/8	91144-165	4		
30	Spiral Pin 5/16" Dia. x 2	91144-186	4		
31	U-Bolt 1/2-13UNC x 3	91434	4		
32	Capscrew 1/2-13UNC x 4 (Full Threaded)	91552	4		
33	Capscrew 3/8-16UNC x 4 1/2 (Grade 5)	9390-068	4		
34	Hex Jam Nut 1/2-13UNC	9395-010	4		
35	Capscrew 1/2-13UNC x 2 (Full Threaded)	97369	4		
36	Locknut 1/2-13UNC	9800	8		
37	Locknut 5/8-11UNC	9801	16		
38	Locknut 3/8-16UNC	9928	4		
39A	Basket & Frame 4' Assembly	81325	1		
39B	Basket & Frame 3' Assembly	81323	1		
40	Frame 5' Roller Weldment	81328	1		
	Frame 3' Roller Weldment	81326	1		
41	Basket 5' Aggressive Weldment	81125	1		
	Basket 3' Aggressive Weldment	81121	1		
42	Decal Rolling Harrow Set	92256	2		
43	Lock Washer 5/16	9404-019	12		
44	Flange Bearing Assembly with 1" Bore	97245B	4		
45	Capscrew 5/16-18UNC x 7/8	97321	12		

Accessories

Please visit [www.unverferth.com/parts/](http://www.unverferth.com/parts/) for the most current parts listing.

Rolling Harrow Attachment - 9'



**Accessories**

Please visit [www.unverferth.com/parts/](http://www.unverferth.com/parts/) for the most current parts listing.

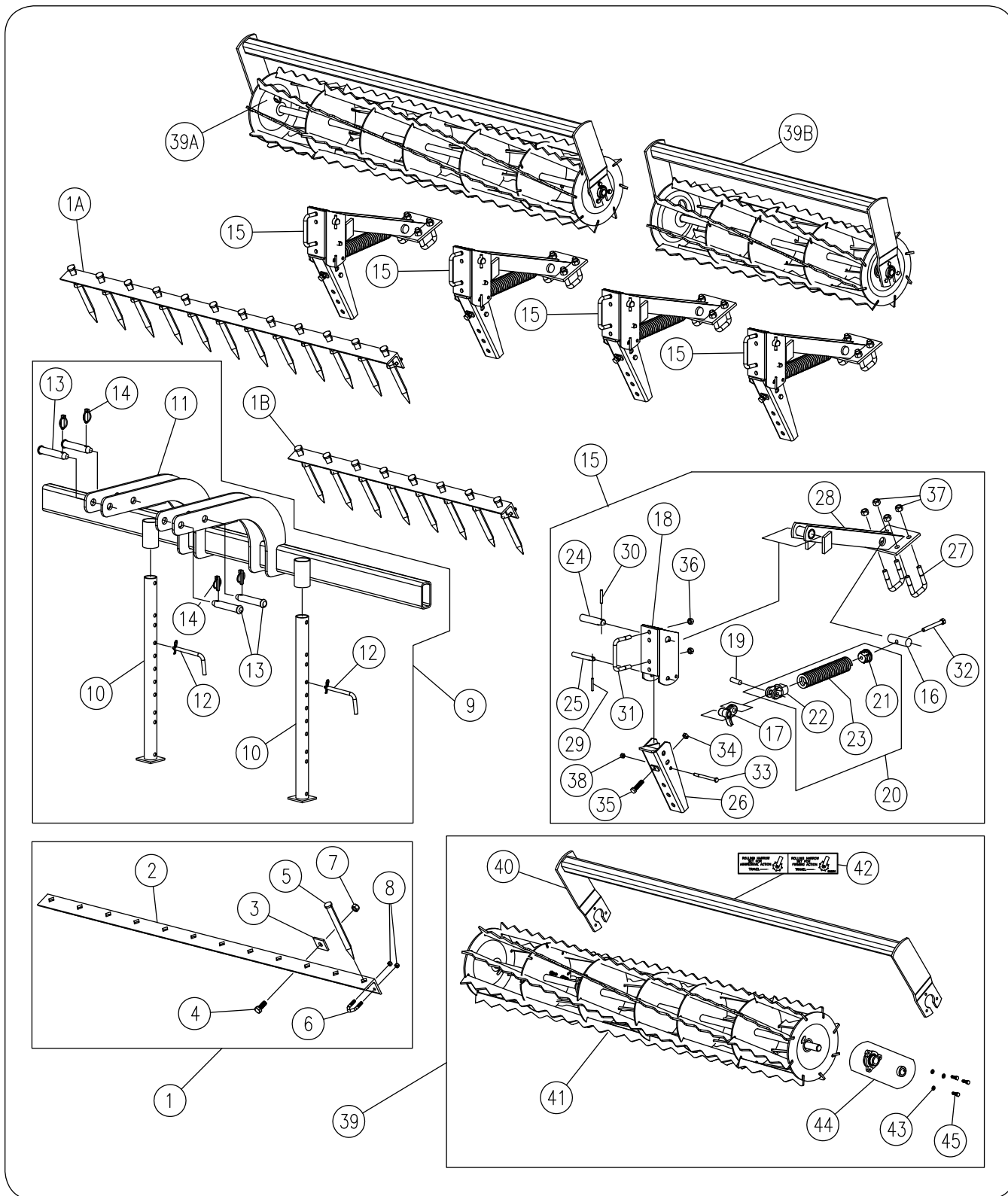
**Rolling Harrow Attachment - 9'**

ITEM	DESCRIPTION	PART NO.	QTY		NOTES
	Rolling Harrow 9' Attachment	72941B	1		
1A	One-Bar 5' Assembly	71183	1		
1B	One-Bar 4' Assembly	71182	1		
			<b>4'</b>	<b>5'</b>	
2	Angle 5' Drag Bar	71186B	1		
	Angle 4' Drag Bar	71185B		1	
3	Washer 1/4 x 2 x 2 1/8	83284B	2	2	
4	Capscrew 5/8-11UNC x 1 1/2 (Grade 5)	9390-122	2	2	
5	Spike Tooth 11" Long	9634P	8	10	
6	V-Bolt 3/8-16UNC x 2	9635	8	10	
7	Locknut 5/8-11UNC	9801	2	2	
8	Locknut 3/8-16UNC	9928	16	20	
9	Rolling Harrow Attachment Mount Bundle	72586B	1		
10	Pipe Stand 28" Weldment	71402B	2		
11	Mount Weldment	71812B	1		
12	Bent Pin 1/2" Dia. x 4 w/Cotter Pin	900801	2		
13	Clevis Pin 1" Dia. x 5 7/16	9950	4		
14	Lynch Pin 7/16" Dia. x 1 3/4	9951	4		
15	Mounting Arm Assembly	84763B	4		
16	Trunnion 1 1/4" Dia. x 3 3/4	86262	4		
17	Link/Spring Adjuster	81253B	4		
18	Mounting Bracket Weldment	81308B	4		
19	Pin 5/8" Dia. x 1 7/8	81321	4		
20	Spring Plug Assembly	82251B	4		
21	Spring Plug	8001B	4		
22	Spring Clevis	81249B	4		
23	Spring	9798B	4		
24	D-Pin 1" Dia. x 4 1/2	84356B	4		
25	D-Pin 5/8" Dia. x 4 3/8	84371	4		
26	One-Bar Arm Weldment	84900B	4		
27	U-Bolt 5/8-11UNC x 3 3/8	85620	8		
28	Roller Arm Weldment	86825B	4		
29	Spiral Pin 1/4" Dia. x 1 7/8	91144-165	4		
30	Spiral Pin 5/16" Dia. x 2	91144-186	4		
31	U-Bolt 1/2-13UNC x 3	91434	4		
32	Capscrew 1/2-13UNC x 4 (Full Threaded)	91552	4		
33	Capscrew 3/8-16UNC x 4 1/2 (Grade 5)	9390-068	4		
34	Hex Jam Nut 1/2-13UNC	9395-010	4		
35	Capscrew 1/2-13UNC x 2 (Full Threaded)	97369	4		
36	Locknut 1/2-13UNC	9800	8		
37	Locknut 5/8-11UNC	9801	16		
38	Locknut 3/8-16UNC	9928	4		
39A	Basket & Frame 5' Assembly	81325	1		
39B	Basket & Frame 4' Assembly	81324	1		
40	Frame 5' Roller Weldment	81328	1		
	Frame 4' Roller Weldment	81327	1		
41	Basket 5' Aggressive Weldment	81125	1		
	Basket 4' Aggressive Weldment	81123	1		
42	Decal Rolling Harrow Set	92256	2		
43	Lock Washer 5/16	9404-019	12		
44	Flange Bearing Assembly with 1" Bore	97245B	4		
45	Capscrew 5/16-18UNC x 7/8	97321	12		

Accessories

Please visit [www.unverferth.com/parts/](http://www.unverferth.com/parts/) for the most current parts listing.

Rolling Harrow Attachment - 10'



**Accessories**

Please visit [www.unverferth.com/parts/](http://www.unverferth.com/parts/) for the most current parts listing.

**Rolling Harrow Attachment - 10'**

ITEM	DESCRIPTION	PART NO.	QTY	NOTES
	Rolling Harrow 10' Attachment	72942B	1	
1A	One-Bar 6' Assembly	72579B	1	
1B	One-Bar 4' Assembly	71182	1	
			<b>4'</b>	<b>6'</b>
2	Angle 6' Drag Bar	71580B	1	
	Angle 4' Drag Bar	71185B	1	
3	Washer 1/4 x 2 x 2 1/8	83284B	2	2
4	Capscrew 5/8-11UNC x 1 1/2 (Grade 5)	9390-122	2	2
5	Spike Tooth 11" Long	9634P	8	12
6	V-Bolt 3/8-16UNC x 2	9635	8	12
7	Locknut 5/8-11UNC	9801	2	2
8	Locknut 3/8-16UNC	9928	16	24
9	Rolling Harrow Attachment Mount Bundle	72586B	1	
10	Pipe Stand 28" Weldment	71402B	2	
11	Mount Weldment	71812B	1	
12	Bent Pin 1/2" Dia. x 4 w/Cotter Pin	900801	2	
13	Clevis Pin 1" Dia. x 5 7/16	9950	4	
14	Lynch Pin 7/16" Dia. x 1 3/4	9951	4	
15	Mounting Arm Assembly	84763B	4	
16	Trunnion 1 1/4" Dia. x 3 3/4	86262	4	
17	Link/Spring Adjuster	81253B	4	
18	Mounting Bracket Weldment	81308B	4	
19	Pin 5/8" Dia. x 1 7/8	81321	4	
20	Spring Plug Assembly	82251B	4	
21	Spring Plug	8001B	4	
22	Spring Clevis	81249B	4	
23	Spring	9798B	4	
24	D-Pin 1" Dia. x 4 1/2	84356B	4	
25	D-Pin 5/8" Dia. x 4 3/8	84371	4	
26	One-Bar Arm Weldment	84900B	4	
27	U-Bolt 5/8-11UNC x 3 3/8	85620	8	
28	Roller Arm Weldment	86825B	4	
29	Spiral Pin 1/4" Dia. x 1 7/8	91144-165	4	
30	Spiral Pin 5/16" Dia. x 2	91144-186	4	
31	U-Bolt 1/2-13UNC x 3	91434	4	
32	Capscrew 1/2-13UNC x 4 (Full Threaded)	91552	4	
33	Capscrew 3/8-16UNC x 4 1/2 (Grade 5)	9390-068	4	
34	Hex Jam Nut 1/2-13UNC	9395-010	4	
35	Capscrew 1/2-13UNC x 2 (Full Threaded)	97369	4	
36	Locknut 1/2-13UNC	9800	8	
37	Locknut 5/8-11UNC	9801	16	
38	Locknut 3/8-16UNC	9928	4	
39A	Basket & Frame 6' Assembly	86388B	1	
39B	Basket & Frame 4' Assembly	81324	1	
40	Frame 6' Roller Weldment	71364B	1	
	Frame 4' Roller Weldment	81327	1	
41	Basket 6' Aggressive Weldment	71423B	1	
	Basket 4' Aggressive Weldment	81123	1	
42	Decal Rolling Harrow Set	92256	2	
43	Lock Washer 5/16	9404-019	12	
44	Flange Bearing Assembly with 1" Bore	97245B	4	
45	Capscrew 5/16-18UNC x 7/8	97321	12	



***Unverferth***<sup>®</sup>  
***Manufacturing Company, Inc.***

[www.unverferth.com](http://www.unverferth.com)