



20-SERIES MODELS

UNVERFERTH SEED PRO BULK BOX CARRIER

New!



THE EVOLUTION OF PRODUCTIVITY WITH **FULLY-LOADED PERFORMANCE.**

The all-new Unverferth 20-Series Seed Pro bulk box carrier seed tenders bring the evolution of productivity and is packed with new standard features for fully-loaded performance. The new CAN bus communication system, combined with a new Honda® engine, controls all operations of the seed tender electronically for the smoothest running power pack and faster hydraulic response times. This new system improves operational efficiency of the power pack by up to 85%, which translates to better fuel efficiency and the ability to run multiple hydraulic functions at the same time with seamless precision. In addition, new standard features on the 20-Series tenders include an auto-tension belt conveyor system, engine auto-throttle, LED work lights, a newly designed 5-function wireless remote and a new DG3520 scale package on model 420XL. Ready to stand out in the crowd? The all-new Midnight Edition 420XL Seed Pro tender features a midnight metallic gray paint scheme, premium aluminum wheels and upgraded standard features. The Unverferth Seed Pro bulk box carrier still features a patented conveyor design that allows you to position the conveyor parallel to the trailer to transfer seed from one container to another - dual-purpose versatility! The all-new 20-Series Seed Pro bulk box tenders maximize productivity with the smoothest operation and more standard features, so you can get the job done quicker during the narrow planting window.

**INNOVATING
THE FUTURE OF
AGRICULTURE**

SEED HANDLING

20-SERIES MODELS

20-SERIES SEED PRO

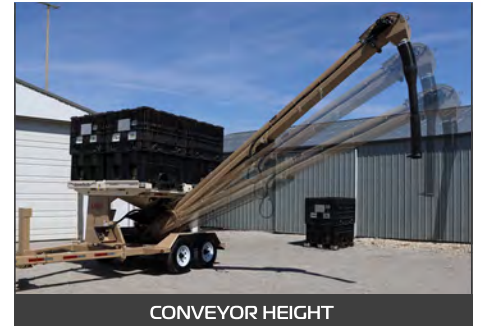
PLATFORM CONSTRUCTION

- Models 420XL and 420 feature a 4-box carrying capacity and model 220 features a 2-box carrying capacity.
- All models feature easy-to-use heavy-duty steel-hinged latches with locks to securely fasten the seed box to the platform.
- Models 420XL and 420 feature dual-unloading chutes with viewing windows for handling multiple seed varieties.
- Protective lids cover the unloading chutes when not in use to keep out moisture and debris.



CONVEYOR DESIGN

- All conveyor lengths are measured from the top bearing to the bottom bearing for a true measurement of reach - model 420XL features a 21' long conveyor and models 420 and 220 feature an 18' long conveyor.
- Choice of 8" (35 bu./min.) or 6" (16 bu./min.) conveyor size depending on model.
- The patented 5-ply rubber conveyor belt features offset rows of U-shaped cleats for maximum unloading efficiency.
 - Conveyor spring-lift assist allows the operator to easily rotate the conveyor 90° for easy transfer of seed from one container to another.
 - The **NEW** auto-tension conveyor features a spring-loaded system that applies consistent tension on the belt for reduced maintenance requirements.
 - Each U-shaped cleat is molded into the backbone of the patented rubber conveyor belt, eliminating the risk of glued-on cleats breaking off and getting into the planter.



CONVEYOR HEIGHT

WIRELESS REMOTE

- **NEW** 5-function wireless remote is standard on all models and controls the conveyor on/off, conveyor raise/lower, opens/closes the hopper doors, starts/stops the engine and controls the engine throttle.
 - The remote can adjust conveyor speed, operate the **NEW** standard LED work lights and has a weight readout when equipped with a scale.
 - The remote can operate numerous optional accessories, including the talc & graphite applicator and hydraulic jack.
 - **NEW** auto-throttle system adapts to the engine load for various functions and automatically increases or decreases the throttle.



AUTO-TENSION CONVEYOR

UNDERCARRIAGE SYSTEM

- Models 420XL and 420 feature two 7,000 lb. torsion axles and 235/85x16 load range E highway-rated tires.
- Model 220 features two 4,000 lb. torsion axles and 225/75x15 load range E highway-rated tires.
- Depending on model, choose from a bumper-pull or gooseneck hitch design and all models feature electric brakes on all axles.



5-FUNCTION WIRELESS REMOTE

STANDARD FEATURES

DG3520 SCALE

- The **NEW** DG3520 scale system is standard on model 420XL (optional on 420 and 220) and features a split screen design, automatic door control to unload a programmed weight of seed, field calc function and features Bluetooth connectivity which allows the user to run limited wireless remote functions from a mobile device in the event of a lost remote.



DG3520 SCALE

POWER PACK

- **NEW** electronically carbureted Honda® engine features simple operation and ensures the smoothest, most consistent performance.
- Re-designed hydraulic valve system improves efficiency by up to 85% and provides faster hydraulic response times. These efficiency increases allow the operator to perform multiple hydraulic functions at once, such as raising and swinging the conveyor at the same time (6-function remote option required).
- The power pack features a **NEW** automated cold start that relieves the load on the engine for easier starting in cold temperatures.
- The new electronically controlled engine combined with updates to the hydraulic system result in more than a 15% increase in fuel efficiency for longer run times.



POWER PACK SYSTEM

MIDNIGHT EDITION

The **NEW** limited Midnight Edition Seed Pro seed tender is available for model 420XL and features a midnight metallic gray paint scheme, specialized decal package and aluminum wheels for a sleek appearance. All Midnight Edition bulk box carriers are packed with the same standard features as all other 20-Series seed tenders, but also include the following as standard:

- 6-Function wireless remote controls conveyor on/off, raise/lower, swing left/right and opens/closes the hopper doors. In addition, the remote controls the engine start/stop and throttle.
- T&G Applicator is tied in with the conveyor hydraulics for consistent application of talc or graphite.
- Hydraulic Jack permits quick and easy raising and lowering for convenient operation.



INTRODUCING THE NEW LIMITED

MIDNIGHT — EDITION —

OPTIONS & SPECIFICATIONS

- Options for the new 20-Series Seed Pro seed tender include a 6-function wireless remote, DG3520 scale for models 420 and 220, remote scale display, talc and graphite applicator, hand wash tank, hydraulic jack, 3-stage adjustable downspout, spare tire and aluminum wheels for 4-box sizes to name a few.

SPECIFICATIONS					
		420XL - 4 SEED BOXES	420 - 4 SEED BOXES	220 - 2 SEED BOXES	
Overall Length (Conv. Forward)	with Bumper Hitch	25'7"	22'11"	21'	
	with Gooseneck Hitch	23'6"	23'6"	N/A	
Overall Transport Width		8'6"	8'6"	8'6"	
Overall Height to Top of Platform (without boxes)		5'10"	5'10"	5'6"	
Overall Height to Top of Seed Boxes (with boxes)		11'1"	11'1"	10'9"	
Platform Length		9'9"	9'9"	8'2"	
Undercarriage Length		20'6"	18'6"	17'	
Hitch to Back of Platform Length		20'9"	18'9"	17'	
Undercarriage Deck Height		1'10"	1'10"	1'10"	
Underframe Clearance		1'2"	1'2"	1'2"	
Conveyor Height in Transport Position		9'10"	9'3"	8'2"	
Height to Top of Conveyor in Transport Position		11'11"	10'10"	10'2"	
Conveyor Maximum Unload Height		14'2"	12'8"	12'4"	
Conveyor Minimum Unload Height		9'10"	9'3"	8'2"	
Conveyor Maximum Side Reach		16'10"	13'3"	13'	
Conveyor Minimum Side Reach		14'7"	11'3"	11'	
Approximate Empty Weight		5,900 lbs.	5,200 lbs.	3,800 lbs.	
Loaded Tongue Weight		1,150 lbs.	1,000 lbs.	700 lbs.	
Base Length (Less Undercarriage)		10'6"	10'6"	9'4"	
Base Width (Less Undercarriage)		6'11"	6'11"	6'11"	
Overall Height (Less Undercarriage)		10'3"	10'3"	9'5"	
Reach with Standard 2-Stage Spout		30' (12-row planter)	30' (12-row planter)	30' (12-row planter)	
Reach with Optional 3-Stage Spout		40' (16-Row planter)	40' (16-Row planter)	40' (16-Row planter)	
Hitch Type Std./Opt.		2-5/16" Ball	2-5/16" Ball	2-5/16" Ball	
Lighting Connector		7-pin flat	7-pin flat	7-pin flat	

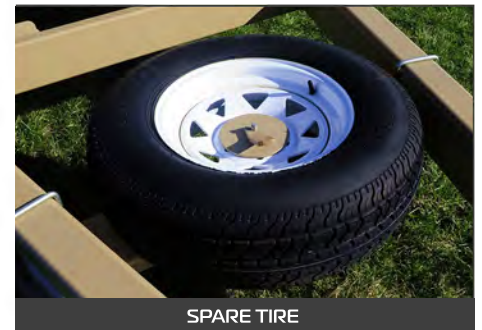
Due to continuing improvements in the design and manufacture of Unverferth Mfg. products, all specifications contained herein are subject to change without notice.



6-FUNCTION WIRELESS REMOTE



HAND WASH TANK



SPARE TIRE

STREAMLINE YOUR SEED OPERATION.

➔ Visit UMequip.com or see your nearest seed handling dealer for more information.

For relevant patent marking, please visit unverferth.com/patents. Additional patent(s) are pending.