

**Unverferth®** Bulk-Seed Handling

*Seed Runner® models 4955DXL, 3955DXL  
self-filling seed tenders*



## ***Larger capacity, greater reach for larger, faster planters and drills***

The models 4955DXL and 3955DXL patented Seed Runner® seed tenders are designed specifically to keep pace with today's largest and fastest central-fill planters and drills with an extended-length conveyor. The dual-compartment models feature 500- and 400-seed-unit capacities respectively with unloading speeds up to 45 bushels per minute!

*Models 4955DXL and 3955DXL*



## Seed Runner® models 4955DXL and 3955DXL Unmatched seed-handling versatility for the largest planters and drills

Unverferth® Seed Runner® seed tender models 4955DXL and 3955DXL are ideal for delivery of the widest variety of bulk seed to the largest and fastest central-fill planters and drills. The patented design allows the conveyor to rotate 180° for filling itself!

Each model features a single-stage 24-foot, smooth-starting conveyor with 90 inches of vertical-height adjustment. Two downspouts are included: a funnel-style downspout provides easy, fast filling of central-fill planters and drills, and a 4' downspout for added reach.

An optional telescopic 3-stage downspout extends side-to-side reach to 50 feet!



### Conveyor

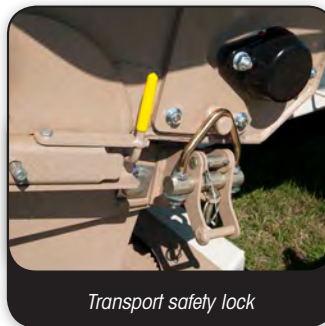
- Patented belt design with offset rows of cupped cleats for fast, gentle seed transfer
- Belts manufactured with 5-ply rubber for long life and gentler seed handling
- 12" belt enclosed in 8" tube for up to 35-bushels-per-minute unloading speed
- Optional 10" conveyor with 15" belt for model 4955DXL for unloading speed up to 45 bushels per minute
- Conveyor powered by Honda® electric-start engine – 690cc (22 gross h.p.) for 4955DXL, 390cc (13 gross h.p.) for 3955DXL

### Tank

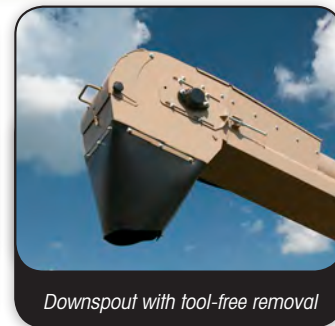
- Large, conveniently placed viewing windows and LED fill lights for checking load level
- Large door opening for greater unloading capacity, with moveable door chute for easily moving conveyor into self-filling position
- Operator controls conveniently located on front of frame
- Unloading is easy with 3-function wireless remote on 4955DXL and 2-function wired control on model 3955DXL
- 18 oz. rollover tarp for protecting valuable seed

### Undercarriage

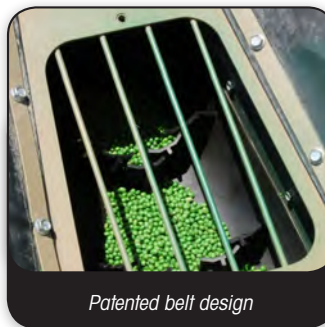
- The heavy-duty undercarriage featuring rubber-cushioned axles, with dual wheels on the 4955DXL and single wheels on the 3955DXL, means smooth and stable towing and greater maneuverability
- Gooseneck hitch is standard on the 4955DXL; the 3955DXL can be outfitted with either a bumper or gooseneck hitch
- Four-wheel electric brakes, transport chains, reflective striping, LED lighting — including clearance lights – are standard for safer road travel
- Rubber-cushioned suspension with shock absorbers for cushioning the load



Transport safety lock



Downspout with tool-free removal



Patented belt design



Rubber-cushioned suspension

### Options

- Basic scale or scale with auto-unloading capabilities
- 3, 6- or 7-function wireless remote
- LED work lights on tank and conveyor for easier nighttime operation
- T&G applicator for accurate seed lubricant application
- Spare wheel and tire
- Electric tarp operation
- Hydraulic jack

See your nearest Unverferth dealer today or visit [umequip.com](http://umequip.com) for complete details on the Seed Runner models 4955DXL and 3955DXL seed tenders.

**Unverferth**  
Manufacturing Company, Inc.

P.O. Box 357 • Kalida, Ohio 45853  
(419) 532-3121  
[unverferth.com](http://unverferth.com)

©2017 Unverferth Manufacturing Co., Inc. Printed in U.S.A.

®™ Trademarks, registered or applied for, of Unverferth Manufacturing Co., Inc., Kalida, OH

Honda is a registered trademark of Honda Motor Company, Japan

Additional facilities in California, Georgia, Iowa, Nebraska, North Dakota, Oregon, Ontario and Saskatchewan, Canada



USRDXL710280M5