



# DEEP-TILL LEGROOM FOR YOUR CROPS



**ZONE-BUILDER®**  
SUBSOILER



**PRIMARY TILLAGE**

**INNOVATING  
THE FUTURE OF  
AGRICULTURE**

MODELS 132, 122 AND 112  
**UMEQUIP.COM**



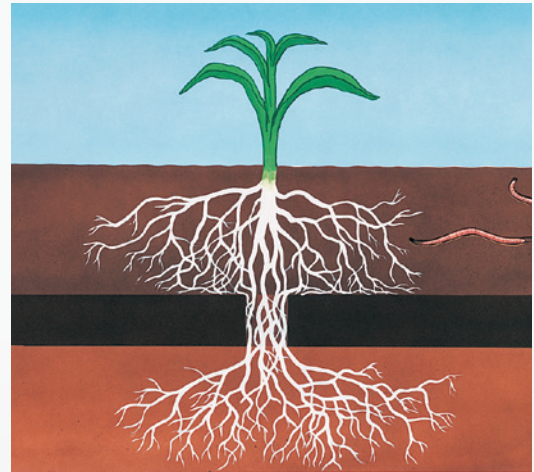


# UNVERFERTH ZONE-BUILDER

## TILLAGE WITH A PURPOSE

Hardpan, or a compaction zone, reduces potential crop yield because it prevents plant roots from accessing soil moisture and nutrients beneath the pan. Limiting that access means plants are more susceptible to the stresses of drought and excess soil moisture.

A subsoiling operation with the **Zone-BUILDER®** subsoiler helps shatter hardpan and creates openings through which plant roots can grow and thrive with minimal soil surface disturbance.



### Zone-BUILDER Subsoiler: Deep-Till Legroom for Your Crops

Tillage needs can change. That's why the Unverferth® **Zone-BUILDER** subsoiler is specifically designed to be customized to meet your individual, changing soil conditions.

The Zone-BUILDER subsoiler models 132, 122 and 112 handle the toughest soil conditions imaginable with ease. Each model is constructed with heavy-duty shank pull-arms, cast points and wearbars for extended durability and design enhancements for greater serviceability and user-friendliness.



Front coulter



Wraparound steel points



Hourglass-shape wearbar

# UNVERFERTH

## ZONE-BUILDER



Model 132

- Field-proven auto-reset shanks with up to 6,000-pound trip force specifically designed for use in rocky, lighter soils
- Features wider, heavy-duty cast pull-arm for greater stability and strength



Model 122

- Designed for use in extremely tight and rocky soils
- Spring-cushioned reset features cast-iron shank-mounting clamp for increased holding power
- Shanks feature 20" vertical travel and maintain 5,040 pounds of point-load throughout the trip cycle



Model 112

- Best suited for use in rock-free fields and loose soils
- Shear-bolt-protected trip design with 7,500 pounds of shear pressure and specially designed shank-mounting brackets for easily accepting rear-mounted strip-builder attachments

### Front coulters

- Coulters are positioned directly ahead of shanks for optimum residue flow
- 1,500 pounds of downpressure easily cuts through the heaviest residue
- Blades ride on 6-bolt hub for extra durability
- Pick your choice of 20" rippled or 24" straight blades to match soil conditions
- Patented cast coulters mounting clamps feature bidirectional clamping for keeping the blade in line with the shank for minimal soil disturbance
- Two heavy-duty tapered roller bearings protected with triple-lip seals, O-rings and recessed hub caps with retaining rings for long-term, trouble-free use

### Low-disturbance shank style

- 3/4"-wide design shatters hardpan up to 20" deep
- 1 3/4" raised-center point with tapered design for less soil disturbance at higher speeds
- Full-length heat-treated cast invertible wearbar with hourglass design (narrower at center) for easily slicing through soil with minimal disturbance to the soil surface
- Heat-treated, austempered steel points for greater life
- Exclusive boot-style point design surrounds shank base for greater stability and extended life



# UNVERFERTH ZONE-BUILDER

## Frame

- Double-frame, all-welded construction with 6"x 6" rear bar
- Exceptional underframe clearance of 38" for improved residue flow
- Powder-coat finish of tractor red or green provides a long-lasting, corrosion-resistant finish
- Available in 2- through 10-, 12- and 16-shank models on 24", 30", 36" and 38" spacings, depending on model
- Unique implement design allows shank positioning on variable row spacings from 20" to 40"



Tool-free adjustability

## Stabilizer wheels

- Tool-free adjustability for greater versatility from field to field
- Mounts on the ends of the mainframe (outboard) or onto the rear mainframe between the shanks (inboard)
- Rigid-frame models are equipped with new 8-ply 7.60 x 15 tires, folding 6-10-shank models have 8-ply 9.5L x 15 tires, and 12- and 16-row models have 10-ply 12.5 x 15 tires

## ACCESSORIES

All models can be equipped with a wide variety of shank-mounted attachments and productivity-enhancing options for tailoring the Zone-BUILDER subsoiler to your specific needs

### Strip-BUILDER attachments

- Create areas of raised, mulched soil for faster warmup and earlier planting
- Parallel-linked, spring-tension adjustment easily set for smooth and consistent blade penetration
- Tillage is both width and depth adjustable and can be equipped with 13-wave, 18" smooth concave or 18" notched concave blades
- Leveling options include Rolling Harrow® baskets with straight or concave serrated blades, or 16" wide press wheels



Strip-BUILDER

### Zone-Firmer press wheels

- Provide additional smoothing and leveling operation to seal the slot. Available with individual 13"-wide, 3-section press wheels or lead angle press wheels followed by 16"-wide, 4-section press wheels



Zone-Firmer



# UNVERFERTH ZONE-BUILDER

## Implement Caddy

- Available in model 500 for up to 9-shank and model 700 for up to 16-row Zone-BUILDER subsoilers
- Feature more than 30" of vertical-lift travel for transport clearance
- Rear-mounted electrical connection for connecting to lights of tillage tool
- Powder coat finish of green, red or black
- **Model 500** features 13,000-pound lift capacity, all-welded 4" x 8" tubular steel frame with Cat. 3 lower quick hitch and auto-latch attachment with adjustable top link. Available with IF320/70R15 dual wheels and tires or 14L16.1 14-ply wheels and tires
- **Model 700** caddy has a total lift capacity of up to 22,000 pounds, all-welded tubular steel frame and Cat. 4 narrow quick hitch attachment. The oscillating dual wheel design enhances transport safety and is available with 295/75 x 22.5 dual wheels and tires for 16,000-pound carrying capacity or 385/65 x 22.5 for 22,000-pound carrying capacity



Implement Caddy  
Model 700

## Rolling Harrow® conditioner

- Available in either 16"- or 12"-diameter baskets
- Chops and evenly distributes residue for faster soil warmup and more even emergence
- Complete self-contained unit across the entire width of the Zone-BUILDER subsoiler for 3- to 9-shank units
- Field-proven angled, scalloped blades are designed specifically for aggressive residue cutting and chopping action
- Spring downpressure ensures level, consistent operation to follow the ground contour
- 16" diameter baskets feature patented 4-bolt sealed bearings to withstand side-load stress and triple-lip seals for longer service life, and 12" baskets feature shielded, 3-bolt sealed bearings



Rolling Harrow® conditioner

## Cleated drum leveler

- Works with models 112 and 132 in rigid 4-8 shank sizes with 30" spacing
- Features 16" diameter roller with 1 3/8" tall notched ribs to enhance soil finishing and firming
- Reversible scrapers keep roller soil free for consistent operation
- Patented 4-bolt sealed bearings for longer service life



Cleated drum leveler

## Additional options

- Build a bed in a one-pass tillage operation by adding the lister bedding attachment mounted behind and between each shank
- Available with spring reset or rigid design
- For 8-row 60" and select larger models, add flex-frame hydraulics to allow the subsoiler wings to float up and down 5 degrees to follow ground contours



# UNVERFERTH ZONE-BUILDER

## ZONE-BUILDER SUBSOILER: LEGROOM FOR YOUR CROPS

### ACCESSORIES



Double front coulters

#### Double front coulters

- Can be added between the standard single-coulter configuration. The double coulter option spaces coulters every 10" for greater residue sizing and flow



Shank-stagger kit

#### Shank-stagger kit

- Increases residue flow and reduces tractor-horsepower pulling requirements
- Positions every other shank 16" rearward



Pull-hitch

#### Rear pull-hitch

- Available for towing fertilizer carriers up to 14,000 pounds of gross vehicle weight and 1,000 pounds of tongue weight for models with an even number of shanks
- Length adjusts from 90"-117" and up to 30" of vertical height adjustment with turnbuckle operation
- Optional hydraulic vertical height control

**FIX YIELD-ROBBING COMPACTION.**

➔ Visit [UMequip.com](http://UMequip.com) or see your nearest dealer today.



# UNVERFERTH ZONE-BUILDER

## Fertilizer attachments

- Dry fertilizer tube attachments with three height settings feature shank protectors and are left- or right-hand mounted
- Fertilizer injectors for liquid fertilizer easily attach to rear of the shank with three height settings and include shank protection



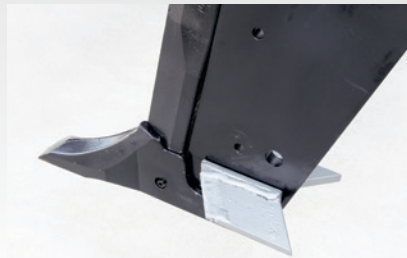
Liquid fertilizer shank attachment



Dry fertilizer shank attachment

## Shatter wings

- 7" wide wings can be set from 0- to 14-degree slope to match the desired level of fracturing
- Can be mounted at either of two height positions on the shank for increased soil and hardpan fracturing



Shatter wings



Shank protector

## Shank protector

- Optional 1/4"-thick, abrasion-resistant steel shank protector kits enhance shank life



# UNVERFERTH ZONE-BUILDER

## SPECIFICATIONS

### Zone-BUILDER Subsoiler with 30" Spacing

Horsepower requirements of 20-40 per shank

Model	Approximate Weight (lbs.)			Transport Width	
	132 auto-reset	122 spring-cushioned reset	112 shear-bolt protected	Stabilizer wheels outboard*	Stabilizer wheels inboard*
2-shank	1,980	2,500	1,825	–	8'2"
3-shank	2,403	2,826	2,167	–	8'2"
4-shank*	2,896	3,460	2,568	11'4"	8'4"
5-shank*	3,393	4,098	2,983	13'10"	10'11"
6-shank*	4,001	4,847	3,509	16'6"	13'6"
7-shank*	4,563	5,540	3,978	19'	16'
7-shank folding	5,353	6,340	4,778	16'5"	–
8-shank*	5,161	6,289	4,505	21'6"	18'6"
8-shank folding	5,960	7,088	5,260	15'6"	–
9-shank folding	6,530	7,799	5,780	16'5"	–
10-shank folding	7,150	8,560	6,300	15'6"	–
12-shank folding	8,490	10,182	7,440	15'6"	–
16-shank folding	11,730	–	10,680	19'8"	–

For specifications on additional spacing options, please visit [UMequip.com](http://UMequip.com).

\*Stabilizer wheels can be mounted on the ends of the mainframe (outboard) or onto the rear mainframe between the shanks (inboard).

### Hitch Specifications

- **Rigid frame – All** – Cat 2 std./quick, Cat 3 std., Cat 3 and 3 narrow quick
- **Folding models – 30" spacings** – Cat 3, Cat 3 QC, Cat 3 N QC, Cat 4 N QC
- **Folding models – 36"-40" spacings** – Cat 3, Cat 3 QC, Cat 3 N QC, Cat 4, Cat 4 QC, Cat 4 N QC

FOR COMPLETE DETAILS ON THE ZONE-BUILDER SUBSOILER AND CUSTOMIZING IT TO YOUR SPECIFIC NEEDS

➔ visit [UMequip.com](http://UMequip.com) or see your nearest dealer today.

Due to continuing improvements in the design and manufacture of Unverferth products, all specifications contained herein are subject to change without notice.  
For relevant patent marking, please visit [unverferth.com/patents](http://unverferth.com/patents).

UMZB3251800M5



**Unverferth**  
Manufacturing Company, Inc.

UNVERFERTH MFG. CO., INC.  
P.O. BOX 357, KALIDA, OH 45853, USA • [UNVERFERTH.COM](http://UNVERFERTH.COM) • 419.532.3121

© 2023 Unverferth Manufacturing Co., Inc.  
®™ Trademarks, registered or applied for, of Unverferth Manufacturing Co., Inc., Kalida, OH  
Additional facilities in California, Georgia, Iowa, Nebraska, North Dakota, Washington, Texas and Ontario and Saskatchewan, Canada